

# Monthly Newsletter

SAN FRANCISCO  
CENTER FOR  
PSYCHOANALYSIS



January 2026 Issue



## A letter from our Newsletter Editor Mary McMillan

The newsletter is has become an **important organ for announcing and analyzing issues** critical to your role as a member and as a leader. For instance, the benefits and privileges of **your membership category** are being analyzed by the Bylaws Task Force, and you can read about this in the Bylaws Corner. And when you are trying to **recruit a volunteer**, you can find help with this on the Help Wanted page.

When you are **in a hurry** or you just don't have time to enjoy the articles, you can quickly access the pages you're interested in by using the **Table of Contents**. Read through the titles to find what's important to you, and click on those pages.

Meanwhile for people who can enjoy the articles, we have a new room for you to explore: **THE SFCP MARKETPLACE**, where members are advertising their items for sale or rent. This month we feature an *analytic couch* for sale, and an *office for rent*. Click on the link in the Table of Contents to go there..

In this month's CONVERSATION ROOM, **Richard Almond** has written the fourth and last installment of his fascinating and illuminating story about his journey into psychoanalysis. **Jonathan Shedler** is announcing that he was interviewed on the IPA podcast, and is providing a summary of the discussion. **Phyllis Cath** announces "Growing up Wired" at the APSA meetings.

In the ADMINISTRATION ROOM, in the BYLAWS CORNER, read about the proposal to allow an **associate member** to fill the same slot on the Board as an **analyst**. The VOLUNTEER OF THE MONTH, **Laura Farha**, tells about how she found a psychoanalysis that addresses the reality she lives in. Read the report from our Board president, and find two more requests on the HELP WANTED page.

In the OPPORTUNITIES ROOM—lots of opportunities for education and connection.

Mary McMillan



# 2026



## CONVERSATION ROOM

The CONVERSATION ROOM is the beginning of what we hope will become a room of lively conversation among members. As you can see in the invitation from Nicole, we are hoping that you will use this room to share who you are. We also want responses to what you have read, as well as letters, stories, editorials, reviews of movies, books, etc., poems, articles—or photographs!.

To submit your own work, send it in an email to Mary McMillan, editor at [mtmcmillan@me.com](mailto:mtmcmillan@me.com)



## ADMINISTRATION ROOM

In the ADMINISTRATION ROOM, we hear from the volunteers who turn the wheels and shift the gears as this organization moves through time. In this room also, we will hear from the **Volunteer of the Month**—one of the volunteers who provide the fuel that makes SFCP a living vehicle: who teach and push paper and make phone calls and write letters and do the work to help the wheel-turners get things done. And we also keep track of how close we are to raising the funds we need to keep SFCP alive and functioning.



## OPPORTUNITIES ROOM

And in the OPPORTUNITIES ROOM, we learn about ways members can participate in programs and events.

## WHAT'S IN THIS ISSUE

Click the links below to get to the desired room.

### CONVERSATION ROOM

[An Invitation to the Members - p5](#)  
[A Psychoanalytic Memoir: Part 3 - p6](#)  
[IPA "On and Off the Couch" Podcast - p10](#)  
[Announcing "Growing Up Wired" - p11](#)

### ADMINISTRATION ROOM

[Board Chair Report - p13](#)  
[Volunteer of the Month - p15](#)  
[Bylaws Corner - p16](#)  
[Psychoanalytic Training Corner - p18](#)  
[PAPPTP Open House - p19](#)  
[Help Wanted - SFCP Opportunities - p20](#)  
[Community Member Mentoring Program - p21](#)  
[SFCP Library - p22](#)  
[Enrico Jones Fund - p23](#)  
[Annual Giving Campaign - Neil's Story - p24](#)  
[Annual Giving Campaign Update - p25](#)

### OPPORTUNITIES ROOM

[Scientific Meeting: Jan 10 - p27](#)  
[James Grotstein Memorial Lecture: Jan 24 - p28](#)  
[Child Colloquia Event: Jan 31 - p29](#)  
[Dialogues Event: Feb 7 - p30](#)  
[SFCP Townhall: Feb 8 - p31](#)  
[Child Colloquia Film Night: Feb 21 - p32](#)  
[Intro to Our Visiting Professor: Feb 25 - p33](#)  
[PAPPTP Open House: Mar 12 - p34](#)  
[Visiting Professor Weekend: Mar 14 & 15 - p35](#)  
[Group Relations Weekend: Apr 25-26 - p36](#)  
[Child Colloquia Series 2025-2026 - p37](#)  
[Dialogues Event Calendar 2025-2026 - p38](#)  
[Wine and Cheese Calendar 2025-2026 - p39](#)  
[Scientific Meeting 2025-2026 - p40](#)  
[Psychoanalytic Student Seminars 2025-2026 - p41](#)  
[Critica Press - p42](#)

### SFCP MARKETPLACE

[Analytic Couch for Sale - p44](#)  
[Office for Rent - p45](#)





Please note that the SFCP office will be closed  
from December 20 - January 4.



---

# Conversation Room



Letters, stories,  
editorials,  
reviews of  
movies, books,  
etc., poems,  
and articles—  
anything  
written by  
members



# AN INVITATION TO MEMBERS FROM THE NEWSLETTER COMMITTEE:

*Do you have a passion or hobby you love? A story or life experience that shaped who you are? We want to hear from you!*



The newsletter committee wants to promote the idea that we are each a whole person, with a history, a family, and relationships—with people, animals, plants, and with institutions, cultures, societies, etc. Both inside and outside the Center, we are involved in projects, occupations, interests, passions, and concerns .

To this end, we are inviting members to participate in the newsletter by giving our readers an opportunity to experience the variety, complexity and diversity in the current lives and histories of our members.

We want to know who you are, how you have come to where you are, what occupies and compels you—within and without the field of psychoanalysis.

Are you producing, creating or building something? Are you generating or participating in an interesting project? Maybe you are passionate about a concern, and want to express it. Or you would like to express something simple, short, or lighthearted.



We welcome each and every one of you to take this opportunity to share a piece of your life with other members.

When you are ready , please reply to this email with an indication of what you might be interested in sharing, and how you would like to share it-- whether you would like someone to interview you, or you would like to write something yourself—maybe a short story or essay.Or maybe you would like to show the result of something you have produced or created.



To stimulate your imagination, here are some possible topics to explore:

*A person, incident or idea that influenced me*

*A problem I am solving or have solved*

*Something I love doing*

*What drew me to psychoanalysis*

*Something I have achieved*

*Been there, Done that*

*Something I think about a lot*

*Something I would like to do*

*Something I wish I had done.*

---

## A Psychoanalytic Memoir: Part IV

### “Some History at SFCP and the Evolution of Psychoanalytic Theories”

Richard Almond

#### Bob Wallerstein

My description of major encounters and influences would be incomplete without mention of Bob Wallerstein, a major figure in the history of SFCP. Trained at the Meninger Foundation, Bob eventually became the head of research there. In 1966 Bob became Chair of Psychiatry at UCSF and Mount Zion Hospital. He was a major figure in psychoanalytic organizations and in psychoanalytic research until his death in 2014.[1]&[2] I sought Bob out for supervision late in my analytic training for his experience with more difficult, characterologically troubled patients. Bob later invited me to join a study group, the “Semi-baked,” an informal monthly writing group of Bay Area psychoanalysts and academics, akin to Lifton’s Psycho-Historical Study Group (see Part II). Ideas presented by members of the Semi-baked have been major influences for me (see below).[3]



Bob Wallerstein

In terms of theory, Wallerstein did not propose major revisions or replacements. In fact, he espoused pluralism and empiricism.[4] These are attitudes that I

share. I have often used a metaphor with students that theories are like reference books on shelves in a library that one can reach for to comprehend a particular clinical situation. For empiricism: we can continue to slice the pie of analytic experience at different angles, but we treat real people who have both universal *and unique* qualities. Arnold Goldberg suggested that in practice we develop a specific new theory for each patient. But from Freud on we have searched for the universal by espousing comprehensive theories. That has led to an oedipal struggle, as each generation kills off the previous one by replacing theory.

#### Concluding thoughts about theory stemming from my wondering “What happened to ego psychology?”

I have meandered in these memoirs through a history of encounters with major psychoanalytic figures from childhood serendipity to later encounters in my training years. This is a personal history of relation to theory and those who have contributed to the large literature of analysis and adjacent studies. I have benefited from the ideas and experience of many other teachers, peers, and students and patients. In particular, I have tried both to characterize and puzzle over ego psychology and its status. Ego psychology, like the Roman Empire, had its era of hegemony, and went out of fashion because of its limitations,

---

[1] Wallerstein, R.S. (1988) One Psychoanalysis or Many? *International Journal of Psychoanalysis* 69; 5-21.

[2] I met Bob initially through an old friend, the Harvard research psychoanalyst Stuart Hauser, who had encouraged my writing and my latent interest in empirical studies. Stuart and his wife, Barbara were friends since medical school. Subsequent to Stuart’s and Barbara Almond’s deaths, Barbara Hauser and I were married in 2018.

[3] In particular, the late Mary Main, developmental researcher at UC Berkeley, foremost attachment theorist.

[4] Wallerstein, R. S. (1991) Psychoanalysis: The Common Ground. *International Journal of Psychoanalysis* 72:166-167. Wallerstein, R. S. (2000) Forty-Two Lives in Treatment: A Study of Psychoanalysis and Psychotherapy. *Forty-Two Lives in Treatment: A Study of Psychoanalysis and Psychotherapy* 56:i-xxiii

---

## A Psychoanalytic Memoir: Part IV cont.

### “Some History at SFCP and the Evolution of Psychoanalytic Theories”

Richard Almond

because the field of psychoanalysis changed, because the surrounding culture changed. And, using the language of Thomas Kuhn's often-cited model of historical process, it entered a period of “theory crisis.”

To the extent that the ideas of ego psychology have been absorbed in our thinking, both in the wider culture and in our newer models, psychoanalysis and society have been enriched. The old is composted, enriching new life. I think this is particularly the case around developmental ideas, where a resurgence of interest in Winnicott parallels the re-inclusion of attachment theory and modern developmental research. Where significant concepts have been lost, for example, the rich fare that Erikson – and others from the social sciences and humanities – offered us, the field has become poorer. Clinically, I believe such central concepts as *id*, *ego*, and *super-ego*, [5] *transference*, *adaptation*, *developmental stages*, *defense*, *resistance*, *unconscious beliefs*, and so on, remain valuable, and deserve a revisit and further integration.

The literary critic, Harold Bloom, wrote about the “Anxiety of Influence,” how each generation of novelists and poets to

revisits major themes from predecessors, but seeks to express them in an original way.[6] Each writer comes to terms with a fear of being subsumed by the voices of the past.

Perhaps that's why we keep discovering new models for describing psychoanalytic experience. There is a tension here between the tendency to look for one broad, inclusive theory model—and -- and wanting enough complexity to help in finding the ‘fit’ between theory and the endless variation of clinical experience.[7] Freud did not hesitate to overlay one model on another, without integrating them. Lawrence Friedman has attributed this to Freud's growing clinical experience, as well as his observation of the failures and limitations of his previous clinical work.[8] Psychoanalysis has continued to generate new ideas and models, but our own anxiety of influence has led to a tendency to want to “be” Freud, i.e., to make *comprehensive* new theory. Wallerstein's view, which I share, seeks to hold onto older ideas while assimilating new ones.

Every person who encounters psychoanalysis has a unique experience of “psychoanalytic theory.” External

---

[5] In Freud's more colloquial German – “The It; the Self, and the Over-self”

[6] Bloom, H. (1997) *The Anxiety of Influence*. Oxford University Press.

One summary: “Poetic influence, as I conceive it, is a variety of melancholy or the anxiety-principle.” New poets become inspired to write because they have read and admired previous poets, but this admiration turns into resentment when the new poets discover that the poets they idolized have already said everything they wish to say. The poets become disappointed because they “cannot be Adam early in the morning. There have been too many Adams, and they have named everything.” In order to evade this psychological obstacle, according to Bloom, poets must be convinced that earlier poets have gone wrong somewhere and failed in their vision, thus leaving open the possibility that they have something to add to the tradition. Poets' love for their heroes turns into antagonism toward them: “Initial love for the precursor's poetry is transformed rapidly enough into revisionary strife, without which individuation is not possible.”

[7] Ernst Prelinger, a psychoanalytic psychologist at Yale, told our training class about a visit he had with a friend who had been to Nepal to learn Tibetan Buddhism. After Prelinger described his interest in the three systems of ego psychology, his friend replied, “Oh, the Buddhists have 196 concepts like that.”

[8] Friedman, L. (1988) *The Anatomy of Psychotherapy*. Routledge.

---

## A Psychoanalytic Memoir: Part IV cont.

### “Some History at SFCP and the Evolution of Psychoanalytic Theories”

Richard Almond

factors like era, geography, training program and the surrounding culture all affect what theory is and does. What is the “right” theory is will vary amongst us. At the same time theory is an aspect of what connects us with others in our solitary clinical work. We want the reassurance that we are part of a group. Early in my psychoanalytic career I wrote about this in two papers, “The Analytic Role”, and “The Holding Function of Theory” in which I used ideas from sociology and anthropology to examine the mind set and social situation of the working analyst.[9] In it I suggested that theory serves an important function in addition to helping us *understand*: it is a value framework around which we can *gather in groups*, and through which we feel *sustained* in our highly subjective work. From the earliest days psychoanalysts have argued, allied, and fought over what the correct theory is, and who gets to decide this.[10]



Betty Joseph

During my career there have been two major transitions in theory at SFCP. As I wrote last time, various applications of ego psychology predominated when I was a candidate in the 1980s. Then in the 1990s some members found their training had limitations clinically, particularly working analytically with serious personality

disorders and with powerful dyadic transferences. Betty Joseph, a neo-Kleinian analyst from the British Psychoanalytic Society, was invited to give clinical workshops for SFCP analysts. Many found her ideas and clinical observations valuable, particularly Joseph's emphasis on countertransference as a guide to understanding the patient's mental state and how to interpret it. She and her colleagues introduced greater emphasis on aggression and projective identification. What followed was a generational turn to British neo-Kleinians, a theoretical revolution. A younger generation of graduates – several of them my contemporaries in training – joined this movement, along with many subsequent candidates. The neo-Kleinian ideas and clinical applications helped with more challenging patients whose predominating defenses were characterized by good-bad splitting and externalization of their frightening affects and internal object relations.

I encountered some of these ideas before analytic training, particularly Kernberg's elegant melding of Klein and ego psychology. The changes at SFCP led me to a similar question one I had had about self psychology. Why *replace* what I had come to know and use with another framework and vocabulary. Why not add on? Certainly, understanding projective identification as the neo-Kleinians saw it, was a valuable model for clinical work. But at this point I was teaching and

---

[9] Almond, R. (1995) The Analytic Role: A Mediating Influence in the Interplay of Transference and Countertransference. *Journal of the American Psychoanalytic Association* 43: 469-493.

Almond, R. (2003) The Holding Function of Theory. *Journal of the American Psychoanalytic Association* 51:131-153

[10] This tendency is highlighted in a joke: a Jewish man is shipwrecked for years on an island. He shows his rescuers around the extensive structures he has made out of coconut trees. In particular a grand one, “This is the synagogue!” “And what is that one over there?” “Bah! That's the other synagogue – I would never set foot in it!”



---

## A Psychoanalytic Memoir: Part IV cont.

### “Some History at SFCP and the Evolution of Psychoanalytic Theories”

Richard Almond

supervising candidates and finding that there was a tendency to see *everything* that happened in treatment as projective identification, often of sadistic, aggressive parts of the self. This approach frequently seemed to lead to therapeutic stalemates, as the candidate repeatedly interpreted the patient's aggression based on countertransference feelings. The patient would then withdraw or dissociate, creating more frustration for the candidate. I suggested, for example, that the candidate talk about his/her countertransference feelings.[11] This seemed to have a liberating effect, because the analyst was now more of an equal, revealing vulnerability to the patient.

Such experiences reinforced my evolution to a relational view of clinical work. Steve Seligman and Mary Main have been significant influences. At the same time, I heard in the writing of Semi-baked members work of local colleagues Dianne Elise, Sam Gerson, Peter Goldberg, Henry Markman, and Mitch Wilson a parallel evolution towards a more spontaneous, creative conception of the analytic role, though framed in terms of the neo-Kleinians, Bion, Winnicott, Lacan and others. The common thread is a move away from Freud's late 19<sup>th</sup> Century model in which an authoritative doctor observes the patient's associations with evenly hovering attention and makes declarative interpretations. Treatment in the more egalitarian late 20<sup>th</sup>-early 21<sup>st</sup> centuries is increasingly seen as a mutual process between two subjectively driven psyches in different, complementary roles.[12]

From a paper by Harry Smith:[13]

Friedman....writes that psychotherapy takes place in a state of personal discomfort for the therapist most of the time and that theory serves to soothe the therapist in times of trial. [14] If he is correct (and I believe he is, even if the therapist's discomfort often lies well hidden) perhaps the factors that determine our uses of theory are less stable, more subject to shifting identifications—or to a good night's sleep—than we like to think. I would like to suggest that our relationship to theory and to its role in practice is always in a state of dynamic tension, responsive to our own inner conflict and clinical uncertainty, as well as to the conflicts we face in the patient.

Finally, there is the current shift in psychoanalytic attention to the social surround, stimulated by recognition of unconscious racism carried in our institutions and culture. The fate of this turn is not yet clear – whether it will be a temporary opening to acknowledging humans' inevitable social embeddedness and implications for our organizations, or a serious, scholarly collaboration with the expertise of the social sciences. At play are complicated issues of our self definition. Are we experts on accessing the unconscious or are we “psychosocial” psychologists combining the intrapsychic and the interactive?



*Pictured: Author, Richard Almond*

---

[11] Steiner, J. (1994) Patient-Centered and Analyst-Centered Interpretations: Some Implications of Containment and Countertransference. *Psychoanalytic Inquiry* 14:406-422

[12] Almond, R. (2008) Roles in the Psychoanalytic Relationship. *Psychoanalytic Dialogues* 18:70-88

[13] Smith, H. F. (2001) Hearing Voices: The Fate of the Analyst's Identifications. *Journal of the American Psychoanalytic Association* 49:781-812.

[14] Friedman, L. (1988) *The Anatomy of Psychotherapy*. Routledge.

---

# IPA “On and Off the Couch” Podcast

Jonathan Shedler

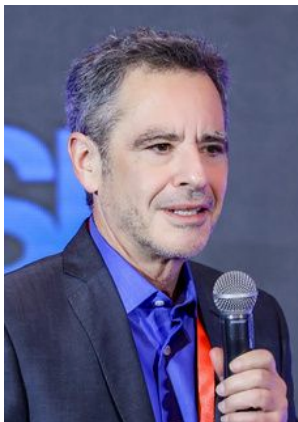
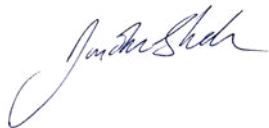
I was interviewed for the IPA “On and Off the Couch” Podcast. The podcast discussion is based on my paper, “[That was Then, This is Now: An Introduction to Contemporary Psychodynamic Psychotherapy](#)”

Episode 194 - Teaching About the Dynamic Mind:  
Then and Now with Jonathan Shedler, PhD

## Abstract

Psychoanalytic therapy has an image problem. The dominant narrative in the mental health professions is that psychoanalysis is outmoded and discredited. What most people know of it are pejorative caricatures dating to the horse-and-buggy era. The caricatures are fueled by misinformation from external sources, including managed healthcare companies and proponents of other therapies who treat psychoanalysis as a foil or whipping boy. But psychoanalysis also bears responsibility. Historically, psychoanalytic communities have been insular and inward facing. People who might otherwise be drawn to psychoanalytic approaches encounter impenetrable jargon and confusing infighting between rival theoretical schools. This chapter provides an accessible, jargon-free, non-partisan introduction to psychoanalytic thinking and therapy for trainees, clinicians trained in other therapy approaches, and the public.

Podcast Link: <https://bit.ly/44UeQ2z>



# Announcing “Growing Up Wired”

Phyllis Cath

Announcing a panel at the Presidential Symposium, at the **American Psychoanalytic Association meetings**, on Friday morning, January 30.

In recent months, we have encountered an almost daily stream of press coverage reflecting growing concern about the impact of technology on mental health and education.

In response to this growing public concern, the panel will bring current research, academic perspectives, and clinical observations to bear on how digital media and devices are reshaping childhood and adolescence. Phyllis Cath is moderating the panel along with Dan Prezant. Presenters include Jenny Radesky, MD (pediatrician-researcher), Janet Rotter, PhD (child psychoanalyst, school director, and psychoanalytic educator), and Karen Gilmore, PhD (educator and child psychoanalyst). Together, they will examine both benefits and risks, explore effects on cognitive, psychic, and social development, and offer practical guidance for parents, educators, and clinicians—highlighting what is known and what remains uncertain. A key aim is to strengthen sustained dialogue and collaboration among pediatricians, educators, and clinicians.

Scholarships are available for educators teaching preschool through 8th grade, awarded first-come until funds are depleted. To request a scholarship, contact George Pelch at [gpelch@apsa.org](mailto:gpelch@apsa.org).

Please email Phyllis Cath at [pjcath@gmail.com](mailto:pjcath@gmail.com) for more information.



Phyllis Cath

*Phyllis Cath*

**GROWING UP WIRED**

Technology and the future of childhood  
What do we know—and What can we do?

---

Technology is shaping minds and relationships.  
With knowledge and intention we can manage the consequences.  
Join distinguished panel of researcher, pediatrician, educator, and psychoanalyst.

Scholarships available for early childhood educators: please  
contact [gpelch@apsa.org](mailto:gpelch@apsa.org)

FRIDAY, JANUARY  
30, 2026 - 11:30 AM THE  
PALACE HOTEL, SAN  
FRANCISCO

Moderators: Phyllis Cath MD and Dan Prezant MD  
Presenters: Jenny Radesky MD, Janet Rotter,  
Karen Gilmore MD

AMERICAN PSYCHOANALYTIC  
ASSOCIATION



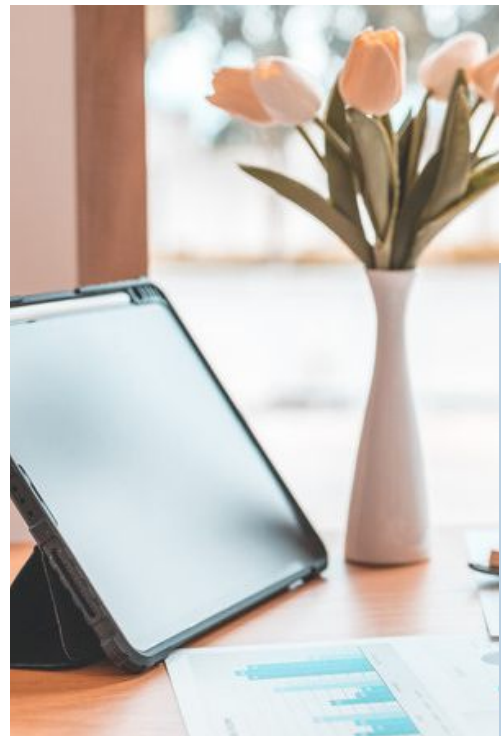
---

# Administration Room

---



Hear from the  
volunteers who  
turn the wheels  
and shift the  
gears as this  
organization  
moves through  
time





## Board Chair Report

Brett Penfil

SFCP Board of Trustees Chair

Dear Members,

I hope you enjoyed the December holidays and I wish each of you a robust and meaningful 2026.

On the off chance that my phone and email were not inundated over the holidays with calls from Analyst Members wanting to talk about the possibility of being our next President (I am writing this on December 11), I am reposting my plea from December's newsletter. (For those keeping track at home, I have received 0 inquiries from Analyst Members.)

### **SFCP is in need of analyst leadership.**

As you know, we currently do not have a President. Under our Bylaws, which are legally binding, the President must be an Analyst Member.

In addition, we have only two Analyst Trustees on the Board. We need at least two more Analyst Trustees immediately.

The Nominating and Governance Committee of the Board, Dorian Newton (Chair), Robin Deutch, Cindy May, Joanna Wise-Bradman, Marcia Hodges, and I, is tasked with recruiting the President and all Board Trustees. We continue to reach out to analyst members to fill these essential roles, but we need your help.

There is clearly more to understand about the long-standing difficulty in recruiting a President and Analyst Trustees. As you may recall, one of the four strategic directions from our 2022 strategic planning process focused on leadership development. In November, that strategic direction team, Ania Wertz, Laura Coleman, Deb Fletcher, Marcia Hodges, and I, hosted a Scientific Meeting to engage the membership in conversation about leadership in psychoanalytic organizations broadly and at SFCP in particular. Our speaker, Harriet Wolfe, shared her deep wisdom and experience as a leader. You may view a recording of the event here [2025-11-01 Scientific Meeting – San Francisco Center for Psychoanalysis](#).

The team is also exploring the possibility of working with an external analyst with expertise in leadership and organizational dynamics to help SFCP in bringing increased attention to leadership development. We will keep the membership updated as these discussions progress.

In the meantime, we need a President and two Analyst Trustees.

---

---

# Board Chair Report cont.

Brett Penfil

SFCP Board of Trustees Chair



## **Here is what you can do:**

- Talk to your analyst colleagues about these vacancies. What would help you and your peers step into one of these positions?
- Talk to anyone on the Nominating and Governance Committee to learn more about the roles and how you would be supported if you stepped into one. These can be very preliminary conversations. No strings attached!
- Remember that the President role can be structured as Co-Presidents, possibly even Tri-Presidents. You may choose who you would like to join forces with, and divide responsibilities as you see fit.
- Know that while the basic duties of the role remain steady, each President engages in the role differently based on their skills and interests. You do not need to be like past presidents.
- Know that Marcia Hodges, our Administrative Director, is a very seasoned, skilled, supportive, and productive teammate. She will help you in any of these roles.
- I will also be available to onboard and support you. As some of you know, my private practice includes organizational consulting and leadership development.
- We have added an Advisory Board component to the President's role, providing the President with a confidential group that will meet regularly to offer support throughout the term.

## **Role descriptions:**

President role description: [PRESIDENT JOB DESCRIPTION - Nov 2025](#)

Board Trustee role description: [Board of Trustee Job Description](#)

When I asked Harriet Wolfe what advice she would offer to anyone considering leadership at SFCP, she responded, "Do it." Being engaged in leadership is a wonderful way to connect with others, learn and grow, and serve your professional home.

I hope to hear from you soon,

Warmly,  
Brett

A handwritten signature in black ink that reads "Brett Penfil". The signature is written in a cursive, flowing style.





## Volunteer of the Month – Laura Farha

Mary McMillan  
SFCP Newsletter Editor

If you enjoy the Clinical Evenings provided by the Coalition for Clinical Social Work (CCSW), one of the people you can thank is Laura Farha—a deep thinker and a dedicated volunteer. She sits on the steering committee for CCSW and participates in decisions about the Clinical Evenings, as well as the classes and mentoring program CCSW provides.

Laura's history gives her a unique and valuable perspective. She grew up with parents who had immigrated to America from Lebanon, and during much of her childhood she was painfully aware of the tragedy going on in the civil war in Lebanon.

After graduating with her Masters of Social Work from University of Michigan, she came away with disturbing questions about God and about the meaning of life and of suffering—questions she had lived with since her childhood. So she came to California to enroll in Starr King School of Ministry, a Unitarian Universalist member seminary of the Graduate Theological Union. After studying there, she left with the capacity for some comfort in sitting with questions for which there are no answers—"the unknown."

In 2012, she and her daughter joined Laura's partner in Lebanon and stayed for six years. There, she was working in her private practice as a Clinical Social Worker. When she returned to San Francisco, she continued working remotely with her Lebanese patients, as well as some Lebanese Americans, and non-Arab patients. She says that in addition to the usual issues patients come with, her Lebanese patients come with a background of large-scale trauma, having lived through multiple wars and



chronic political instability. Also, the culture is family-based, rather than individualistic, so they come with questions about conflicts between self and group.

Prior to moving to Beirut, Laura's experiences with psychoanalytic institutes in the Bay Area convinced her that psychoanalytic work was not a good fit for her: "It was too disembodied, too intellectual, and too Zionist." In 2019, after returning from Lebanon, she happened to attend a CCSW Clinical Evening with Tam-Anh Pham and Karim Dajani, and she was very moved. She says, "There was not a dry eye in the house." This event gave her hope that she could actually be with psychoanalytic thinkers who were more involved with the reality she lives in. She applied and was accepted into SFCP'S PPTP, and greatly enjoyed that experience.

Laura says she found that CCSW provides a "unique, invaluable and heart-forward forum for psychoanalytic thinking and learning." Soon she was volunteering with the organization: "I love the people, and I want to give back to the people who gave me so much." And, she says, "It is a magical group."

These days, Laura is very excited about her new project: launching the Beirut Institute of Psychoanalysis with two Lebanese analysts: Dania Dandashli and Noha Sadek. Their first Psychoanalytic Psychotherapy program will be starting in January with 15 fellows.

---

---

## BYLAWS CORNER

by Brett Penfil



The issues we present in the Bylaws Corner have been discussed by both the full Board and the Bylaws Task Force. Our hope in providing monthly updates is that members will have the information they need to **participate in the Town Hall** discussion and the upcoming survey.

In case you have missed some of the Bylaws Corners in previous newsletters, here is a summary of them:

- In September, the Bylaws Task Force, a Task Force of the Board of Trustees, introduced the Bylaws Corner to the newsletter. If you missed that article, you can read it here: [https://www.sfcg.org/wp-content/uploads/2025/09/newsletter\\_2025-09.pdf](https://www.sfcg.org/wp-content/uploads/2025/09/newsletter_2025-09.pdf). Each month from October through January, the Task Force is providing information about each of the substantive bylaw changes under consideration. You can read the previous [Bylaws Corners here](#).
- On February 8th, 2026, from 10am to 12pm, the Task Force will hold an online Town Hall. You can read about the [Town Hall here](#). After the Town Hall, the Task Force will send a brief survey to all members to gather input on the proposed revisions. After integrating member feedback, the Task Force will finalize a revised set of proposed bylaw changes. The voting membership will then be asked to vote on the proposed revisions.

This month, the Task Force presents the pros and cons of one of the substantive issues that is being considered for revision: **revising the category of Analyst Trustee of the Board to include Associate Members**.

Currently, the Bylaws require that the board include a specified number of Trustees from each of two categories: **Analyst** and **Community** Trustees. Analyst Trustees include members in the analyst, life, and candidate categories. Community Trustees include community members as well as individuals outside of SFCG, such as a Trustee with financial expertise who may serve as Treasurer.

However, the current Bylaws do not state which Trustee category **Associate Members\*** are in.

---

---

# BYLAWS CORNER cont.

by Brett Penfil



Question:

1. Should “Analyst Trustee” of the Board be changed to “Analyst/Associate Trustee” of the Board?

Pros	Cons
<p>SFCP has consistently had difficulty recruiting analyst members to join the Board of Trustees. Adding Associate Members to this Trustee designation would enable the Board to fill its seats.</p> <p>Associate Members are already allowed to vote alongside Analyst Members – except for matters pertaining to programs. The Board does not vote on matters pertaining to programs, so this change would not affect current voting rights.</p>	<p>An Associate Member may not bring the same level of psychoanalytic knowledge and training to the role of Trustee.</p>

*\*Definition of Associate Member: In 2021, the SFCP analyst members voted to create the associate member category as a step toward creating more equality for highly engaged community members; psychotherapists who have graduated from one of the PPTP programs or had an equivalent level of training, two years or more, could apply to become an associate member and receive many of the same rights and benefits as analyst members.*

This list of pros and cons is not intended to be exhaustive. We look forward to hearing more of your thoughts and questions at the February Town Hall. Next month, we will share the pros and cons of another potential bylaws revision. Thank you for your engagement with these important considerations.

**Bylaws Task Force**

Cheryl Goodrich  
Marcia Hodges  
Mary McMillan  
Brett Penfil  
Kira Steifman

---



---

# Psychoanalytic Training Corner

## Messages and Updates

Dear SFCP Community,

Please SAVE THE DATE of April 19, 2026 from 3 - 5 pm for our Second Annual Afternoon of Art and Poetry Fundraiser with Alice Jones and Forrest Hamer hosted by the Candidate Training Grant Committee.

All donations go to the Candidate Training Grants for Equity & Diversity Program which helps cover the costs of analytic training for candidates who identify as a person of color and candidates with financial need. The goal of the Candidate Training Grant program is to make psychoanalytic training more affordable and accessible to individuals affected by systemic inequities which have previously served as barriers to pursuing analytic training (e.g. race-based or class-based inequities). [\[See complete description of the Candidate Training Grants here.\]](#)

The event will include poetry reading with Forest and Alice and an online art auction. More information to come!

For now, we are calling for donations of art for our art auction. If you have art you would like to donate to our art auction, please reach out to Rebecca Gitenstein at [dr.rebecca.gitenstein@gmail.com](mailto:dr.rebecca.gitenstein@gmail.com).

The art auction is a central part of our fundraising event, and last year our community greatly enjoyed the beautiful and varied art pieces that were all donated by our talented community. We are deeply grateful to the artists who donate art to this cause.



Last year's event was a resounding success, raising \$12,500, and with our other fundraising efforts, our total for the year was \$34,000 through voluntary contributions from SFCP Members. With these funds, we were able to make grants of \$2,348.49 to all of our 15 applicants!

We hope that you will join us this year as we listen to and engage in an interactive listening experience of poetry with Alice and Forrest, view and bid on beautiful art, and most importantly, come together as a community for this important initiative and remember that being together in this way is something that we all need.

Thank you, and we look forward to seeing you in April!

Sincerely, from the CTG Committee,  
Leora Benioff  
Celeste Birkhofer  
Renu Cappelli  
Lauren Cardillo-Geller  
Paige Friedlander  
Rebecca Gitenstein  
Emily Horowitz  
Miriam Lundy  
Michal Ramon  
Kelsey Stager  
Beth Steinberg

---

[Click here to apply](#) to any of our [Psychoanalytic Training Programs!](#)

---

---

# Psychoanalytic Psychotherapy Training Program

## Corner

Messages and Updates



## Palo Alto PPTP

Neil Brast

Palo Alto Psychoanalytic Psychotherapy Program Co-Chair

Come eat, drink, and connect with new colleagues while learning about PAPPTP's Fellowship Year. Join us for a clinical evening featuring a case presentation, clinical discussion, and information about this enriching opportunity for clinicians interested in developing a psychoanalytic way of listening, thinking, and working.

The PAPPTP Fellowship Year brings psychoanalytic ideas and methods to life. In four seven-week segments, faculty present their work with adults and children, showing how clinicians foster experiences that lessen suffering and promote growth. It is designed for students, interns, therapists newly in practice, as well as experienced clinicians seeking a rich and stimulating exposure to psychoanalytic psychotherapy. The program also offers new professional connections and participation in a community of psychoanalytically oriented clinicians.

Fellowship Year classes meet 28 Fridays in the Stanford Psychiatry Building from 10:30–11:50 a.m., October through May (2026–27).

We hope you'll join us to meet faculty and current students, enjoy light refreshments, and explore whether PAPPTP is right for you.

Thursday, March 12, 2026 · 7:00–9:00 p.m.  
Private Home in Palo Alto  
(Address provided upon RSVP)

Details can be found at [Palo Alto Psychoanalytic Psychotherapy Training Program \(PAPPTP\): Fellowship Year – San Francisco Center for Psychoanalysis](#).

A handwritten signature in cursive script that reads "Neil Brast".



[Click here to apply](#) to any of our Psychoanalytic Psychotherapy Training Programs!

---



# LOOKING TO GET INVOLVED?

## SFCP OPPORTUNITIES

---

**SFCP has well over two hundred non-teaching volunteer roles, which are essential to the functioning of the Center.**

### HERE ARE TWO EXAMPLES:

#### EDITOR OF THE SFCP ROLES DATABASE

**What are the tasks and responsibilities for this role?**

- Monitor the database for new entries.
- Edit new entries.
- If a role needs a new occupant, then approve the role for publication in the "Help Wanted" sections of the SFCP Website and the SFCP Newsletter.
- In general, keep the database organized.

#### MEMBER OF THE ANNUAL GIVING CAMPAIGN TEAM

**What are the tasks and responsibilities for this role?**

- Increase your understanding of how to raise funds for the Center and respond to requests for help from staff to design appeals.
- Help develop policies and activities for the AGC team.

### FOR MORE INFORMATION ON ROLES AND OPPORTUNITIES:

Please visit [Help Wanted - Opportunities to Participate](#) in the Membership Section of the SFCP website.

### FOR PROGRAM LEADS OR THOSE PLANNING TO LEAVE THEIR ROLE:

Please complete this questionnaire to get the role posted - [SFCP Roles Questionnaire](#).



---

# SFCP Community Members – Mentoring Program!

Holly Gordon

Would you like to meet with an analyst to discuss your questions about psychoanalytic thinking and clinical work? We'd love to meet with you! The Mentoring Program at SFCP matches participants with analyst mentors to discuss the mentee's interest in psychoanalytic work.

The Mentoring Program is open to mental health clinicians at all levels of training and experience, who are SFCP Community Members, an easy and fun community to join! Mentors meet once a month with mentees for the academic year.

Examples of Topics to Discuss:

- Information, resources and literature to help a mentee explore particular areas of interest. For example: work with particular populations such as trauma survivors; current thinking about LGBTQ issues; the impact of race, class and culture on psychological life; child work; mindfulness; research about psychoanalytic process; and psychoanalytic interfaces with other fields such as poetry, literature, neurosciences
- How to choose among current activities, programs, courses, and services offered by SFCP that are relevant to the mentee's interests and stage of training
- Questions about developing as a psychoanalytic psychotherapist and about psychoanalytic training
- Connecting the mentee with colleagues who the mentor thinks might be a valuable resource based on the mentee's interest in a particular subject

You must be an SFCP Community Member to apply for this program, here is [the link to become a Community Member](#).

And here is [the link to the Mentoring Program](#).

"I'm new to private practice and was looking to get mentoring and support from someone with a deep knowledge of psychotherapy. During our initial meetings I was able to get several very practical and pressing questions answered and feel more confident about seeing clients in my new private practice setting. We discussed psychoanalytic approaches to working with parents and children, which helped me to move forward with my cases and also to consider aspects that I had not previously considered. I have a particular interest in mindfulness and my mentor put me in touch with a therapist who incorporates mindfulness into a psychodynamic therapy practice. In addition, I work with children and my mentor referred me to the Child Colloquium, where I met other clinicians and heard a very helpful presentation. I feel very fortunate to meet with my mentor as needs arise."

Matt Higgins LCSW, Community Members Mentoring Program

Contact: Holly Gordon  
[hollygordon4@gmail.com](mailto:hollygordon4@gmail.com)

COST: FREE to SFCP Community Members.

[LINK TO APPLICATION](#)

QUESTIONS: If you have questions about the program, please contact:

Holly Gordon [hollygordon4@gmail.com](mailto:hollygordon4@gmail.com)

---



# more than just books!

Curated Research  
Cozy Reading Corners  
& Books

Rashmita Jani Sriram, Librarian  
[rashmita.sriram@sfcpc.org](mailto:rashmita.sriram@sfcpc.org)



*This fund was established in memory of Enrico E. Jones, PhD, an African American Psychologist and Professor of Psychology at UC Berkeley. Enrico (Rico) completed his analytic training at San Francisco Psychoanalytic Institute in 1992 and served on the faculty until 2000. Rico died in 2003, after a 3-year battle with multiple myeloma.*

## WAYS TO DONATE

### ONLINE:

[sfcp.my.site.com/s/donation?campaign=EnricoJonesFund](https://sfcp.my.site.com/s/donation?campaign=EnricoJonesFund)

### BY MAIL:

**Payee:** SFCP

**ATTN:** Enrico Jones Fund  
444 Natoma Street  
San Francisco, CA 94103

### BY PHONE:

(415) 563-5815

# THE ENRICO JONES FUND FOR EQUALITY AND EXCELLENCE

124 grants have been given to  
people of color since 2021!

- 15 students received tuition credits in 2021
- 25 students received tuition credits in 2022
- 27 students received tuition credits in 2023
- 27 students received tuition credits in 2024
- 30 students estimated to receive tuition credits in 2025

## A recipient told us:

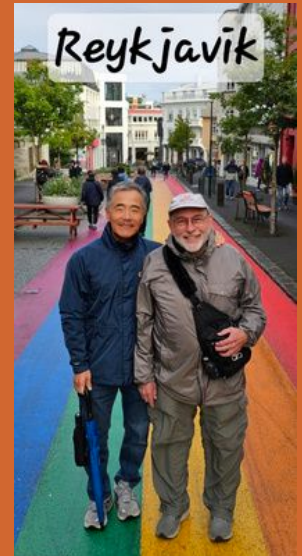
*"I strongly believe that as a psychoanalytic community, we all benefit from the Enrico Jones Fund's implicit and explicit recognition of the painful racism in our community in need of acknowledgement and repair. And for that I am the most grateful."*

## Join Us!

*The EJ Fund has received significant support from the SFCP community, with 123+ members contributing since inception. As the number of recipients has increased each year since the Fund's inception, the diversity of SFCP's students has grown and we anticipate an increase of applicants going forward. To continue providing meaningful tuition support to persons of color, it is essential that contributions continue yearly. Please consider making the EJ Fund an annual recipient of your charitable giving.*

# Neil's Story: Why I Give to SFCP

Neil Brast



I am writing this, having just turned eighty, as I continue to practice, teach, and enjoy good health.

Coming from an economically insecure lower middle-class family, the message was clear: doing better in life could only be achieved through education and hard work. My parents were bright and hard working but limited by lack of education. My father had to skip high school to support his own family after his father, a gambler, twice bankrupted the family. For my mother, within her family of origin college was not an option. Her too fertile marriage dictated decades of childcare and drudgery with little respite or recreation. After the birth of her fourth child, she had a nervous breakdown.

I was lifted and empowered by my education in the Chicago Public Schools, the College of the University of Chicago, Stanford Medical School, Stanford Psychiatry Residency, and, much later, the San Francisco Psychoanalytic Institute (SFPI). I benefited from meritocratic opportunities and generous public financial support -- and white privilege, unbeknownst to me at the time. I have worked diligently over the past 50 years and have become financially secure, enjoying opportunities not available to my parents: learning, hobbies, travel, music, and my own home. Most importantly, I could afford decades of psychoanalyses, which relieved my substantial inner misery, turmoil, and constrictions and permitted me a rich, creative, and satisfying life. It fosters my callings as healer and teacher. And it enabled me to meet, marry, and grow together with my partner of 32 years, James, who emigrated from South Korea, where being gay meant you were not human.

I began charitable giving early in my career to repay the gifts I received from our society and support causes I deeply value and to put a dent in my substantial survivor guilt. SFCP is now one of those causes I support. Despite my intense dislike for certain aspects of psychoanalytic organizations, I am deeply committed to the values, concepts, and tools of psychoanalysis, which immensely benefit me and countless others I know, including my patients.

I support SFCP and its mission. I wish for its survival, growth, and increasing vigor as an educational institution and cultural resource available to all. The Center needs both financial security and the challenging work of its member volunteers. I encourage others to join me in volunteering and donating. I am fortunate to be able to do both.

What SFCP offers the world is precious -- and fragile. I want to see it strengthened and remain vibrant for future generations.

**\*IF YOU WOULD LIKE TO CONTRIBUTE TOO, [PLEASE CLICK HERE!](#)**

*If you would like to share your story, please contact Mary McMillan at [mtmcmillan@me.com](mailto:mtmcmillan@me.com)*





# Annual Giving Campaign Update!

## Our 2025-2026 Goals

### *Are we on track?*

#### **1. RAISE \$132,000**

We have already raised \$29,986!  
That is 22.7% of our goal since our launch  
1 month ago, compared to \$38,086, or  
29.3%, last year at this time.



#### **2. 18% INCREASE IN DONATIONS**

We are at 82 donations so far, compared  
to 91 donations last year at this time.



#### **3. INCREASE PARTICIPATION AT IN- PERSON EVENTS**

We had our first in-person Community  
Building event of the year in the South  
Bay and had a 45% increase in attendance,  
compared to last year!



HELP US REACH OUR GOALS!  
[CLICK HERE TO CONTRIBUTE!](#)



# Opportunities Room (in chronological order)

.....>



Ways members  
can participate  
in programs  
and events



# SCIENTIFIC MEETING

SAN FRANCISCO  
CENTER FOR  
PSYCHOANALYSIS



## PSYCHEDELIC PSYCHOANALYSIS: TRANSFORMATION OF THE SELF

As the psychedelic renaissance enters our consulting rooms, clinicians need to be able to understand and work with patients who are interested in using psychedelics. In this talk, we will discuss the main psychedelic agents being used for mental health treatment, clinical issues around their use, and how analysts can work skillfully with these patients.

### Presenter:

**Megan Rundel, PhD** is a clinical psychologist, and a Personal and Supervising Analyst and Faculty at the Psychoanalytic Institute of Northern California. She is also a graduate of the Psychedelic Assisted Therapies and Research program at the California Institute of Integral Studies, as well as a number of ketamine training programs. She has taught and written widely on the use of psychedelics in enhancing psychoanalysis; her most recent papers are "Psychedelic Psychoanalysis: Transformations of the Self," published in *Psychoanalytic Dialogues* in 2022, and "Expansion and Regression in Oceanic Experience: A Model of Psychedelic Consciousness for Psychoanalysis" co-authored with Karen Peoples, Ph.D., to be published in *Psychoanalytic Dialogues* later in 2025. She maintains a private practice of psychoanalysis and consultation in Oakland, California.

**Saturday,  
January 10, 2026**

**10:30am - 12:00pm**



**In Person at**

**San Francisco Center for  
Psychoanalysis  
444 Natoma Street  
San Francisco, CA 94103**

*Remote option available*

### Moderator:

**Ilene Philipson, PhD, PhD**  
San Francisco Center for  
Psychoanalysis (SFCP)

### 1.5 CME/CE Credits Available

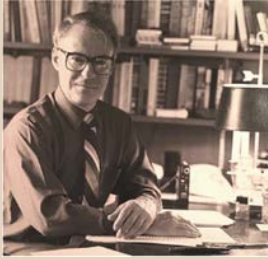
*This program is free  
of charge!*

**FOR CME AND PROGRAM INFO:  
[WWW.SFCP.ORG/2026-01-10-  
SCIENTIFIC-MEETING/](http://WWW.SFCP.ORG/2026-01-10-SCIENTIFIC-MEETING/)**





*The Regional Bion Symposium in conjunction with SFCP presents:*



James Grotstein

# The 11th Annual James Grotstein Memorial Lectures in Comparative Psychoanalysis

## Exploration of Intersubjective Clinical Models: Ogden, Ferro and Civitarese

Saturday, January 24, 2026 | February 28, 2026 | March 28, 2026

In-person at SFCP and via Zoom

Recording available to program registrants for a two-week period following each lecture

*Throughout the international psychoanalytic community, James Grotstein's analytic work advocated for learning from the various analytic traditions populating its universe, especially from British Object Relations theory. In honor of Grotstein's work in comparative psychoanalytic theory, there will be a series of 3 hybrid meetings featuring the Intersubjective models of Thomas Ogden, Antonino Ferro and Giuseppe Civitarese. The relevance of these intersubjective models will also be contrasted with one another in a panel discussion during the culminating meeting in this series.*

### Part 1: January 24, 2026

9AM -11AM Pacific Time

2 CE/CME Credits Available

Deconstructing Thomas Ogden's Model of Intersubjectivity

Presenter: Joseph Aguayo, PhD



Thomas Ogden

### Part 2: February 28, 2026

9AM -11AM Pacific Time

2 CE/CME Credits Available

Antonio Ferro's Field Theory

Presenter: Catherine Mallouh, MD



Antonio Ferro



Giuseppe Civitarese

### Part 3: March 28, 2026

9AM -12PM Pacific Time

3 CE/CME Credits Available

Giuseppe Civitarese's Analytic Field Theory

Presenter: Chris Lovett, PhD\*\*

Panelists: Joseph Aguayo, PhD, Chris Lovett PhD, and Catherine Mallouh, MD

\*\*Chris Lovett will be participating remotely, other panelists will be in-person

Participants are encouraged to register for the full 3-part series for maximum immersion; however single lecture tickets are also available.

### Pre-registration is required.

	General Admission	SFCP Members	Candidates & SFCP Students
Full Series:	\$265	\$210	Free
Single Program Ticket:	\$135	\$110	Free
Each CE/CME Unit:	\$15	Free	Free

*\*Become an SFCP member to receive reduced registration rates and free CE/CME credits on this program and future SFCP programs.*

TO REGISTER AND LEARN MORE, VISIT:



[www.sfcpsf.org/james-grotstein-memorial-lectures](http://www.sfcpsf.org/james-grotstein-memorial-lectures)







# CHILD COLLOQUIA SERIES

## Specialized Parent Work: a Critical Element to Supporting the Health of Trans, Nonbinary, and Gender-Exploring Youth

Research shows\* that LGBTQ youth living in highly supportive communities attempt suicide at half the rate of those in unaccepting environments. Clearly, affirming and supportive contexts are profoundly protective for transgender youth. Thus, having parents who can serve as allies and advocates is often pivotal to their children's survival, as well as to their overall mental and emotional well-being.

This presentation offers an overview of a multifaceted approach to supporting trans, non-binary, and gender-questioning youth by engaging their parents. Dr. Holub will outline the central themes that ground this specific gender work, integrating practical, educational, supportive, and psychoanalytic perspectives. Dr. Michelle Jurkiewicz will present a case that brings many of these themes to life, illustrating the nuances and complexities that frequently emerge in families where gender is a presenting issue.

**SATURDAY, JANUARY 31, 2026  
10AM – 12PM**

**IN PERSON EVENT at**  
SFCP  
444 Natoma Street  
San Francisco, CA 94103

**PRESENTER:** MELISSA HOLUB, PHD

**CASE PRESENTER:**  
MICHELLE JURKIEWICZ, PSYD

**FREE EVENT!**

**For more information and to register, visit:**

[www.sfcpsf.org/2026-01-31-child-colloquia/](http://www.sfcpsf.org/2026-01-31-child-colloquia/)





# Dialogues in Contemporary Psychoanalysis

## A PASSION FOR EVER MORE

*with Dominique Scarfone*



*Dominique Scarfone, MD*

***What happens when desire no longer seeks satisfaction but escalation? When the wish to feel alive veers into the compulsion to overpower?***

In his new paper, **Dominique Scarfone** traces a line from Freud's drive theory to contemporary crises of violence, addiction, and breakdown, offering a compelling account of what he calls the "sexual drive for power" and illuminating how the very forces that animate our social world also threaten to destroy it.

Joined by discussant, **Adam Blum**, the program turns to what is at stake for psychoanalysis today: how these dynamics shape psychical life and clinical practice, and how we handle the forces that overwhelm, disrupt, and define our work in this extraordinary historical moment.

**Presenter:** Dominique Scarfone, MD

**Discussant:** Adam Blum, PsyD

**Moderator:** Julie Ruskin, PhD



Saturday, February 7, 2026  
9:30 AM - 12:30 PM



SFCP  
444 Natoma Street  
San Francisco, CA 94103

*Remote attendance available.*

### 3 CME/CE Credits Available!

\$ 55 — General Admission

\$ 30 — SFCP Members

Free — SFCP and non-SFCP

Candidates, PPTP Trainees and  
Students\*

### To Register:

[www.sfcpsf.org/2026-02-07-dialogues/](http://www.sfcpsf.org/2026-02-07-dialogues/)



SFCP INVITES YOU TO JOIN OUR

SAN FRANCISCO  
CENTER FOR  
PSYCHOANALYSIS



# TOWN HALL MEETING

***Let Your Voice Be Heard:***

*Engage in conversation about proposed revisions to the Bylaws!*

- The Bylaws Task Force will review possible revisions — that are also being shared monthly in the [Bylaws Corner](#) — and asks for your input.
- Share your thoughts of other pros/cons the Bylaws Task Force hasn't thought of.

**SUNDAY,  
FEBRUARY 8, 2026  
10AM - 12PM**

[View the Bylaws Corner here!](#)

**ONLINE EVENT**



***Have your voice heard  
before voting commences  
this spring!***

For more information and to RSVP, visit  
[www.sfcpsf.org/townhall-meeting/](http://www.sfcpsf.org/townhall-meeting/)

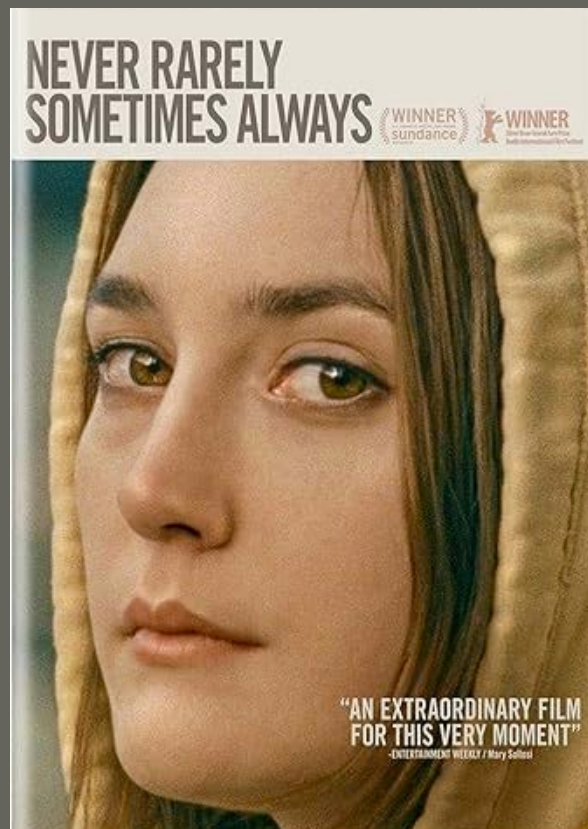




# FILM

## SCREENING AND DISCUSSION

*Never Rarely Sometimes Always* (2020) directed by Eliza Hittman is a beautifully visual and strongly crafted film that follows a 17-year-old girl, Autumn (Sidney Flanigan) as she travels from rural Pennsylvania to New York City to navigate an unintended pregnancy and the challenges of seeking an abortion when it is illegal for her to obtain one in her home state. This intimate drama leads us on a journey of a shutdown adolescent who is struggling both at home and in her personal life but needs to take action. In this stunningly constructed film we see Autumn's life as she negotiates both her internal world and the social constructions that try to define and limit her. Join Reyna Cowan PsyD, LCSW as we watch and discuss the intricacies of this remarkable film together.



**Discussant:** *Reyna Cowan, PsyD, LCSW*

*Reyna Cowan, PsyD, LCSW, is a psychoanalyst and a child therapist. She is a Personal and Supervising Analyst at PINC, and is faculty at both PINC and at SFCP. She teaches extensively on child and adolescent issues, primitive states, and Winnicott, as well as courses on film and film criticism. She runs a free monthly salon series for PINC linking psychoanalysis to the arts and culture called "Second Fridays." She has a private practice in Oakland where she works with adults, couples, adolescents, and children.*

# 02.21.2026

# 5 PM

# 8 PM

## SNACKS AND DRINKS INCLUDED

*We will begin with the screening, and a discussion with the audience will follow.*

**FREE  
EVENT!**

**IN PERSON AT SFCP | 444 NATOMA STREET  
SAN FRANCISCO, CA 94103**

FOR MORE INFO: [www.sfcpsf.org/2026-02-21-child-colloquia/](http://www.sfcpsf.org/2026-02-21-child-colloquia/)







Please join us for the

# INTRODUCTION TO OUR 2026 VISITING PROFESSOR

Featuring Rudi Vermote, MD, PhD

WEDNESDAY,  
FEBRUARY 25, 2026  
7:30PM - 9:00PM  
ONLINE VIA ZOOM

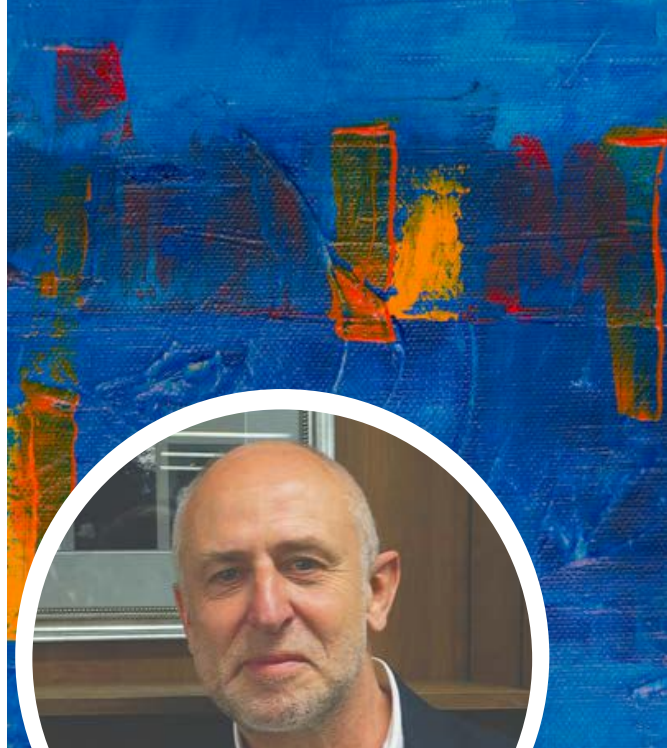
**Presenters:** Peter Goldberg, PhD &  
*Kristin Fiorella, PsyD, MFT*

Rudi Vermote is coming in person from Belgium to San Francisco as SFCP's Visiting Professor the weekend of March 14 and 15, 2026. To set the stage for his visit, Peter Goldberg and Kristin Fiorella will conduct a workshop to introduce aspects of Vermote's thinking on late Bion, especially his conceptual and clinical use of "O."

*FREE EVENT!*

FOR MORE INFORMATION:

[WWW.SFCP.ORG/2026-02-25-VISITING-PROFESSOR](http://WWW.SFCP.ORG/2026-02-25-VISITING-PROFESSOR)



## RUDI VERMOTE

**Rudi Vermote, M.D., Ph.D.** is a training analyst with the Belgian Society of Psychoanalysis. Past president of the Society and emeritus professor at the University of Leuven, Dr. Vermote has played a major role in shaping psychoanalytic training and research. Internationally known for his presentations and author of *Reading Bion* (2019), Dr. Vermote draws on late Bion, Eastern philosophy, the writings of Meister Eckhart, and neuropsychanalysis to illuminate the nonverbal communications of the unconscious ("something beyond thinking") and its relevance to clinical practice.

## Further Readings and Links

In order to get a sense of Dr. Vermote's analytic attitude, here are some further readings and links!

[Click here to learn more!](#)



SFCP'S PALO ALTO PSYCHOANALYTIC PSYCHOTHERAPY TRAINING  
PROGRAM (PAPPTP) INVITES YOU TO

# PAPPTP Informational OPEN HOUSE

*PLEASE JOIN US FOR APPETIZERS, A CLINICAL CASE DISCUSSION,  
AND PROGRAM INFORMATION!*

*STUDENTS AND FACULTY WILL BE ON HAND TO TALK WITH YOU  
ABOUT OUR FELLOWSHIP YEAR AND TWO-YEAR PROGRAM.*

**THURSDAY, MARCH 12, 2026**

**7:00PM - 9:00PM**



*AT A PRIVATE HOME IN PALO ALTO. ADDRESS PROVIDED UPON RSVP.*

PLEASE RSVP HERE!



FOR MORE INFORMATION ON THE PAPPTP PROGRAM, PLEASE VISIT [SFCP.ORG/PAPPTP/](https://www.sfcpsf.org/papptp/)



Please join us for

# VISITING PROFESSOR WEEKEND 2026

Featuring Rudi Vermote, MD, PhD  
*in person*

## “A DAY WITH RUDI VERMOTE”

SATURDAY, MARCH 14, 2026  
10:00AM - 3:00PM

\$ 140 — General Admission

\$ 110 — SFCP Members

Free — SFCP and non-SFCP Candidates, SFCP PPTP  
Trainees, and University Level Students

4 CME/CE credits available for free (for SFCP members)  
or \$ 30 (for non-members)

*\*This event includes a boxed lunch.*

## “PROFESSOR’S CHOICE”

SUNDAY, MARCH 15, 2026  
10:00AM - 11:30AM

\$ 60 — General Admission

\$ 40 — SFCP Members

Free — SFCP and non-SFCP Candidates, SFCP PPTP  
Trainees, and University Level Students

1.5 CME/CE credits available for free (for SFCP members)  
or \$ 30 (for non-members)

FOR MORE INFORMATION:

WWW.SFCP.ORG/VISITING-  
PROFESSOR-WEEKEND-2026/



## RUDI VERMOTE

**Rudi Vermote, M.D., Ph.D.** is a training analyst with the Belgian Society of Psychoanalysis. Past president of the Society and emeritus professor at the University of Leuven, Dr. Vermote has played a major role in shaping psychoanalytic training and research. Internationally known for his presentations and author of *Reading Bion* (2019), Dr. Vermote draws on late Bion, Eastern philosophy, the writings of Meister Eckhart, and neuropsychanalysis to illuminate the nonverbal communications of the unconscious ("something beyond thinking") and its relevance to clinical practice.

**IN-PERSON ONLY**  
**SFCP**  
**444 Natoma Street**  
**San Francisco, CA 94103**

## Further Readings and Links

In order to get a sense of Dr. Vermote's analytic attitude, here are some further readings and links!

[Click here to learn more!](#)



# SFCP'S ANNUAL GROUP RELATIONS WEEKEND

**APRIL 25-  
26 2026**

**9AM - 5PM**

SFCP  
444 Natoma Street  
San Francisco, CA

**FACILITATORS**  
ALAN RUIZ, MFA, AND  
JANICE K. WAGNER, LCSW

**SAVE  
THE  
DATE**

**MORE DETAILS TO COME!**





2025-2026

# Child Colloquia Series

The Child Colloquium Series are offered free of charge through a generous support of the **SFCP** and the **Sophia Mirviss Fund**.

Sat, Oct 25

10:00AM – 12:00PM

## LEARNING TO SURF: ANALYZING ADOLESCENTS

PRESENTER: MARY BRADY, PHD

DISCUSSANT: JILL SALLBERG, PHD, ABPP

MODERATOR: DAVID FRANKEL, PHD

Sat, Nov 8

10:00AM – 12:00PM

## THE PLAY OF EROS: THE STORY OF AN ADOLESCENT BOY, HIS BODY AND HIS ANALYST'S BODY

PRESENTER: BRUCE REIS, PHD, FIPA, BCPSA

DISCUSSANT: TERRENCE OWENS, PHD

MODERATOR: DAVID FRANKEL, PHD

Sat, Jan 31

10:00AM – 12:00PM

## SUPPORTING THE HEALTH OF TRANS, NONBINARY, AND GENDER-EXPLORING YOUTH BY SUPPORTING THEIR PARENTS

PRESENTER: MELISSA HOLUB, PHD

Sat, Feb 21

5:00PM - 9:00PM

## FILM SCREENING AND DISCUSSION

DISCUSSANT: REYNA COWAN, PSYD, LCSW

Sun, Mar 29

10:00AM – 12:00PM

## MOURNING THE BODY AS BEDROCK: DEVELOPMENTAL CONSIDERATIONS IN TREATING TRANSEXUAL PATIENTS ANALYTICALLY

PRESENTER: AVGI SAKETOPOULOU, PSYD

Sat, Apr 18

10:00AM – 12:00PM

## TREATING ADOLESCENT EATING DISORDERS THROUGH FAMILY THERAPY

PRESENTERS: JENNIFER VERA, MFT AND LYNN TRACY, PHD

FOR MORE INFO VISIT:

[www.sfcpsf.org/child-colloquium-series/](http://www.sfcpsf.org/child-colloquium-series/)



ALL EVENTS ARE IN PERSON AT SFCP  
444 NATOMA STREET  
SAN FRANCISCO, CA 94103



# DIALOGUES IN CONTEMPORARY PSYCHOANALYSIS 2025-26

**MALIGNANT NOSTALGIA:  
FANTASIES of WHOLENESS  
and the VIOLENCE  
of EXCLUSION**

Saturday,  
DECEMBER 6,  
2025,  
9:30am-12:30pm

Presenter:  
DONALD  
MOSS,  
MD

Discussant:  
MITCHELL  
WILSON,  
MD

Moderator:  
JOHN DiMARTINI,  
PHD

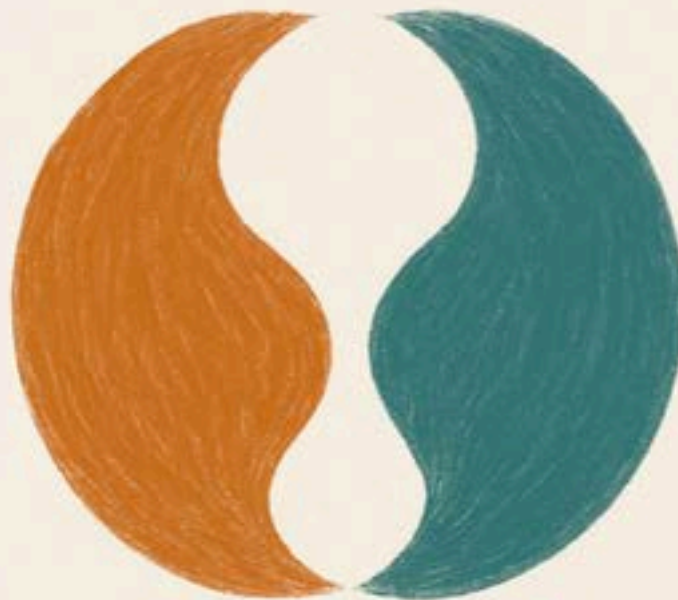
**A PASSION for EVER MORE**

Saturday, FEBRUARY 7, 2026  
9:30am-12:30pm

Presenter:  
DOMINIQUE  
SCARFONE, MD

Discussant:  
ADAM BLUM,  
PSYD

Moderator:  
JULIE  
RUSKIN,  
PHD



**SPRING SYMPOSIUM**

Saturday, APRIL 11, 2026, 10am-12pm

with acclaimed writer and critic MAGGIE NELSON  
in conversation with FRANCISCO GONZÁLEZ, MD  
moderated by ELIZABETH BRADSHAW, PSYD

All programs at **SFCP** and on **ZOOM**  
Join the DIALOGUE at [SFCP.ORG](https://www.sfcpsf.org)



SAN FRANCISCO  
CENTER FOR  
PSYCHOANALYSIS







# Wine, Cheese, & Community Building

## 2025-2026 Event Schedule

*Join us for one of our upcoming open houses  
for Community Building,  
in support of The Annual Giving Campaign!*

**07**

**DECEMBER**

**PAUL AND DENA  
SORBO'S HOME**

PALO ALTO, CA (South Bay)



**17**

**MAY**

**AMY WALLERSTEIN  
FRIEDMAN'S HOME**

PIEDMONT, CA (East Bay)



Want to contribute? Visit [sfcp.my.site.com/s/donation](https://sfcp.my.site.com/s/donation)



# SCIENTIFIC MEETINGS 2025-2026

Mark your calendars for this wide  
range of programs in '25-'26!

	<b>Sat</b> <b>October 4</b> <b>10:30am - 12pm</b>	<b>THE RADICAL OTHERNESS OF MASUD KHAN</b> <i>Presenter: Ilene Philipson, PhD, PhD; San Francisco Center for Psychoanalysis (SFCP)</i> <i>Moderator: Chuck Fisher, MD; SFCP</i>
	<b>Sat</b> <b>November 1</b> <b>10:30am - 12pm</b>	<b>LEADERSHIP IN THE PSYCHOANALYTIC MOVEMENT</b> <i>Presenter: Harriet Wolfe, MD; SFCP; President, International Psychoanalytic Association</i> <i>In conversation with Brett Penfil, LMFT, MPH; Chair, SFCP Board of Trustees</i>
	<b>Sat</b> <b>January 10</b> <b>10:30am - 12:30pm</b>	<b>PSYCHEDELIC PSYCHOANALYSIS: TRANSFORMATIONS OF THE SELF</b> <i>Presenter: Megan Rundel, PhD; Psychoanalytic Institute of Northern California</i> <i>Moderator: Ilene Philipson, PhD, PhD</i>
	<b>Sat</b> <b>March 7</b> <b>10:30am - 12pm</b>	<b>ENDINGS IN ANALYSIS</b> <i>Presenter: Stephen Purcell, MD; SFCP and Alice Jones, MD; SFCP</i> <i>Interviewer: Steven Goldberg, MD; SFCP</i>
	<b>Sat</b> <b>April 4</b> <b>10:30am - 12pm</b>	<b>OUTCOME STUDY OF PSYCHOANALYSES OF CHRONICALLY DEPRESSED PATIENTS WITH EARLY TRAUMA, AN UPDATE OF MODE</b> <i>Presenter: Marianne Leuzinger-Bohleber, PhD; Senior Scientist of the University Medicine Mainz, Department of Psychosomatics and Psychiatry</i> <i>Interviewer: Cheryl Goodrich, PhD; SFCP</i>
	<b>Sat</b> <b>May 16</b> <b>10:30am - 12pm</b>	<b>Title TBD</b> <i>Presenter: SFCP Diversity, Equity, and Inclusion (DEI) Steering Committee</i>
	<b>Sat</b> <b>June 13</b> <b>10:30am - 12pm</b>	<b>HASKELL NORMAN EVENT</b> <i>Award Recipient: Paul Williams, PhD</i>



For more details and updates about these events, please  
visit our website [www.sfcpsf.org/scientific-meetings/](http://www.sfcpsf.org/scientific-meetings/)

*\*CME/CE credits pending\**





# PSYCHOANALYTIC STUDENT SEMINARS

2025-2026

Wednesdays, 7:00pm - 8:30pm  
Online via Zoom



These seminars are offered as a community service intended to supplement local training with psychoanalytic clinical instruction. The courses are offered free of charge to pre-and post-doctoral psychology interns, psychiatry residents, and pre-licensed MFT and social work interns currently in clinical placements.

**JANUARY  
7-28**

**Becoming a Couple: An Introduction to  
Psychoanalytic Couple Psychotherapy**

Dana Iscoff, MFT

**FEBRUARY  
4-25**

**Exploring the Unconscious – An  
Introduction to Jungian Dreamwork**

Betty Tharpe, MFT

**MARCH  
4-25**

**Psychoanalytic Psychotherapy, Psychoanalytic  
Theory, and Trans Experience(s)**

Loic Pritchard, MFT

FOR MORE INFO VISIT:  
[WWW.SFCP.ORG/PSYCHOANALYTIC-STUDENT-SEMINARS/](http://WWW.SFCP.ORG/PSYCHOANALYTIC-STUDENT-SEMINARS/)



# CRITICA

Critica is an inclusive and transdisciplinary publishing platform that focuses on offering a reflective and aesthetic space to consider complex social and cultural issues through psychoanalytic and creative lens. We invite dialogue while offering the possibility of expression and creative expansion of our understanding of contemporary cultural and collective issues in the hopes of promoting social change.

**Learn more:**  
**[www.critica.press](http://www.critica.press)**

Critica is published online twice a year, in the Fall and Spring. Previous issues can be found in our archives, and printed on demand. The publication receives submission of essays, literary and artistic pieces, and book/film reviews in response or in conversation with contemporary collective/social experiences.

# SFCP Marketplace



A place where  
members can  
rent or sell  
their items



---

## Analytic Couch For Sale

Cricket Halsey



Analytic couch for sale. Hand-made by the Analytic Couch Co., upholstered in soft and durable mohair. The burgundy color is subtler than this iPhone photo suggests.

If interested, please call or text me at 510.418.0170

---



---

## Psychotherapy Office for Rent - Piedmont/Oakland

Available Jan 1, 2026

A Friend of Cricket Halsey

A lovely office in a four-suite psychotherapy space will be available Jan 1st. We are a small group of therapists seeking a fourth clinician to join our calm, collegial environment. The space is ideal for someone looking for a full-time office, with the option to sublet. The room is best suited for therapists working with teens and adults; it is not ideal for child therapy.

Located in a well-established cluster of therapy offices in Oakland's Piedmont area—near Kaiser, shops, and restaurants—the building offers easy street parking for both clinicians and clients.

Rent includes:

- All utilities
- High-speed internet
- Shared office supplies

Building amenities:

- Waiting room
- Small kitchen
- Call light button system
- Professional, quiet atmosphere

If you're seeking a warm, collaborative environment with a stable lease and upcoming building upgrades, we'd love to connect.

Click here to view the posting: <https://sfbay.craigslist.org/eby/off/d/oakland-psychotherapy-office-piedmont/7896838616.html>

