

SAN FRANCISCO CENTER FOR PSYCHOANALYSIS



WHAT'S IN THIS ISSUE

Click the links below to get to the desired page.

- [Board of Trustees Report - 1](#)
- [President's Report - 3](#)
- [Report from CAPPTP Chair - 5](#)
- [New Procedures for Scheduling Events - 6](#)
- [Community Member Mentoring Program - 7](#)
- [Library Announcement - 8](#)
- [Enrico Jones Tuition Fund - 10](#)
- [Child Colloquia Event - 11](#)
- [Wine and Cheese Event - 12](#)
- [Scientific Meeting - 13](#)
- [CCSW Clinical Evening - 15](#)
- [Dialogues Event - 16](#)
- [Dialogues Event - 18](#)
- [SA Discussion Group - 20](#)
- [James Grotstein Memorial Lecture - 21](#)
- [Member Announcements - 23](#)
- [Ads and Other Events - 24](#)

MESSAGE FROM THE SFCP BOARD CHAIR

Brett Penfil, MFT, MPH
Chair, Board of Trustees

In my continued effort to demystify the work of the Board of Trustees, this month I will focus on the SFCP bylaws. California requires all nonprofits to adopt bylaws as part of incorporation. I encourage you to [read our bylaws](#) to understand more about how SFCP functions as an organization. The Board relies on the bylaws to ensure ideas and initiatives from the membership meet the financial and legal considerations of SFCP and California state law. The bylaws were last amended in 2021, and the Board plans to update them in the next two to three years. If you have any questions or thoughts about the bylaws, please feel free to reach out to me.

Last month I shared the list of current members of the Board of Trustees. I'm pleased to announce that two additional Trustees joined the Board at the October meeting. The SFCP voting membership approved Marc Wallis as an Analyst Trustee. Marc will serve as the Chair of the Nominating and Governance Committee.

SFCP Board Report

The Board approved Dara Sheik, a PAPPTP alumnus, to serve as a Community Trustee. Dara will join the Annual Giving Campaign Committee. Welcome to both Marc and Dara and thank you for serving on the Board of Trustees.

At the October Board meeting, Megan Goodwin, who will replace Doug Slakey as the Candidate Representative in 2024, and David Luna, SFCP's diversity, equity, and inclusion (DEI) consultant, joined the meeting as guests.

Committee report key points:

- The Finance Committee shared that SFCP's financials continue to be on target. Please note that SFCP's annual operating budget (the money we need to sustain SFCP for the 2023-24 fiscal year) requires that SFCP meets the \$130,000 annual giving campaign goal.
- The Facilities Committee reviewed completed and pending necessary upgrades to the 444 Natoma building.
- The Nominating and Governance Committee is seeking a new Treasurer. If you know of anyone who has finance experience and might be interested in serving in this role, please contact Marcia Hodges, Marc Wallis, or me.
- The Annual Giving Campaign will be considering a legacy giving program.

The meeting ended with further discussion of a candidate training grant proposal, which will be addressed at the November Board meeting.

If you have any questions or comments about the Board of Trustees meetings or the organization please feel free to reach out to me at brett@brettpenfil.com.

SFCP President's Report

As I mentioned in my previous newsletter article, a goal I am hoping to work toward for the 2023-24 academic year is to continue to develop SFCP as a Center with increased attention to our group life and our organizational culture. As part of this effort, I attended my first Group Relations conference last month, which prompted a great deal of useful reflection, and a few highlights really stuck with me. The first is how jarring it was to be a new participant in an established process, and to bump up against the edges of a group culture which was unfamiliar to me, and how disorienting it felt to try to catch up to a conversation that was already underway, with layers of history beneath it. All of this served as an experiential illuminator of what I imagine many SFCP members feel like as they attempt to join and navigate our organization. Many of our embedded traditions – conscious and unconscious – inadvertently generate feelings of exclusion and confusion, all of which undermines our intention to build community. It was very useful to me to experience how easily and unknowingly this can happen. The second issue that came forward was the importance of developing strong work group processes which support and authorize individual voices within the group. In particular, I came to appreciate how essential it is for a group to have processes which attend to the challenging question of how to make decisions and move forward collectively, while also registering difference and dissent. Both of these experiences made clear to me that strengthening our capacity as a group to recognize, value, and *work across individual differences* will be essential to building a sustainable psychoanalytic organization for the future.

In keeping with this aim, efforts are underway in many SFCP programs and committees to evaluate our processes and systems, with the goal of mitigating unnecessarily repressive hierarchies and facilitating engagement amongst our members. The **Faculty Committee** is organizing faculty development events and mentoring groups to support new faculty, and to strengthen collaboration within the faculty community. They have also eliminated the various category designations from the faculty application process (which had previously been based on level of analytic training), and now have only one designation for all SFCP Faculty. For more information, please contact the co-chairs of the Faculty Committee (John DiMartini, Peter Goldberg, Celeste Schneider).

The **PED** continues to review and revise its procedures across the analytic training program, including increased attention to the group process in the classroom setting. Monthly *Reflection Groups* are now built into the curriculum for candidates to have scheduled time to reflect on the experience of working together in analytic training, and the PED has sponsored a monthly workshop for instructors focused on *Group Relations Contributions to Psychoanalytic Teaching*. The PED Progressions and Graduations Committee (PGC) has revised its longstanding procedures to allow candidates the option to attend part of their annual PGC meeting to dialogue with the committee around their training experience and the development of their analytic work.

The **CCSW** held a Clinical Evening on *White Leaders Doing DEI Work* which focused on the challenges and the paradoxes inherent in that process. Their next Clinical Evening will be held on Wednesday, December 6, 2023, entitled *When the Clinical Hour Stretches Beyond the Page: Alternatives to Clinical Presentations* which will explore story-telling as a creative approach to representing clinical work.

The **PPED Division** has classes successfully underway in the CAPPTP, PAPPTP, and SF-PPTP programs. The CAPPTP Chair Benjamin Fife will be stepping down in December, and we are enormously grateful for his service. The CAPPTP Steering Committee is actively recruiting new members, so please get in touch with Benjamin Fife if you are interested in joining their important training efforts.

SFCP President's Report cont.

The **Management Team** has also approved several new initiatives in keeping with the goal of an increased focus on our group life:

- SFCP Holiday Schedule: To allow members who observe important cultural and religious holidays to fully participate in SFCP programs and classes without scheduling conflicts or missing class, *no SFCP programs or classes will be held (either in-person or remotely) on the dates designated as [SFCP Holidays](#)*. This policy was adopted with input from all program chairs, and staff will be in touch with programs to assist in its implementation.
- Scheduling Conflict Procedures: It is often the case that members involved in committee service are unable to attend interesting SFCP educational offerings because these events conflict with scheduled meetings. In addition, participation in all SFCP programs is reduced if multiple programs are scheduled at the same time. In order to support staff in dealing with scheduling conflicts, and to support member participation in all SFCP programs/committees by avoiding double bookings, SFCP is implementing a new procedure to minimize the number of events held on a given day (see accompanying article in this newsletter describing the procedures in detail). We understand and regret that these scheduling procedures may add extra steps to the workload of program organizers; however, this is our best attempt to find a compromise that both supports staff in dealing with scheduling conflicts, and also supports the community aspect of our Center by avoiding competing programs and respecting all members' efforts in program planning and committee service to SFCP.
- Anonymous Member Demographics Survey: In keeping with the Holmes Commission recommendation to track the demographics of our organization, an *anonymous* survey on member demographics will be added to all membership renewal forms beginning in 2024. All survey data is collected in aggregate form and your responses are completely *anonymous*. Though all questions are optional, we encourage all members to participate as fully as possible as this will allow us to get a better sense of the different identities represented in our membership, and will also help us to understand the impact of our Equity & Inclusion efforts over time. The Demographic Survey will also be included in all program applications and enrollment forms for the purpose of tracking those statistics as well.
- New signage for the front bathrooms has been implemented indicating All Gender and ADA accessibility.

Throughout this work, I am very grateful for the efforts of our **organizational consultant David Luna** who has been attending multiple meetings of the leadership teams and the Board, and has been offering his expertise regarding our organizational processes. I am also grateful for the newly formed Equity & Inclusion Steering Committee who will be working with David to conceptualize the broader work within the organization.

Finally, I want to mention that – as we are all aware – the recent events in Israel and in Gaza have been horrifying to witness, and many of our members who have loved ones in the region have been impacted very directly. These are terribly traumatizing conditions, and as we know from our clinical work, a traumatic field is prone to cause splitting, misunderstanding, reactivity, and isolation. All of this has the potential to further traumatize everyone, just at the time when we need our community more than ever. I very much appreciate the ongoing efforts of all of our members to support one another during these times of challenge. In response to questions that have been raised, I wanted to make you aware that SFCP supports our members' right to free speech, and has posted the following statement on our website: “SFCP is a non-profit institution that recognizes the rights of its members and faculty to free speech in their private lives and on social media platforms; however such private communications are neither sponsored nor endorsed by SFCP. We condemn hate speech of any kind.”

I want to end by again expressing my gratitude for the SFCP community and reiterating my appreciation for all of you, and the challenging work you are doing in these difficult times.

Report from the Chair of the Child and Adolescent Psychoanalytic Psychotherapy Training Program (CAPPTP)

CAPPTP's 2023-2025 class is in full swing. While the course is running smoothly, the program is also in a moment of change and needs volunteers.

Our steering committee chair Benjamin Fife will be stepping down at the end of this calendar year and we are looking for 2-3 SFCP members willing to step into the open Steering committee co-chair roles.

If you are interested in joining a well functioning team that is keeping an innovative psychoanalytic psychotherapy training program running, please let us know. Please email Tina Phu (tina.phu@sfcg.org), SFCP's Education Program Coordinator about your interest and she will help you get connected with volunteer opportunities.

New Procedure for Scheduling SFCP Events/Programs/Classes/Meetings:

Program Planners: Thank you for your efforts to schedule a program for SFCP! In order to support staff in dealing with scheduling conflicts, and to support participation in all SFCP programs/committees by avoiding double bookings, SFCP has implemented a procedure to handle potential scheduling conflicts. Please follow the procedures outlined below to schedule your event:

1. Review the [SFCP calendar](#) (as well as the Combined Calendar) posted on the SFCP website to check for open dates, and contact the Membership Services Coordinator nicole.lee@sfcf.org to reserve a date.
2. *Ideally, no events should be scheduled on a date where there is an existing program/meeting posted on the SFCP Calendar. If there is already a program/meeting scheduled for a date you would like to use, and if you think that there will not be a conflict given the audience you anticipate for your program, please contact the existing program organizer to ask if they approve the double booking. Before double booking, all program planners are advised to consider the likely target audience of each program/meeting and the potential burden it places on members to either attend both programs or decide between them (thereby reducing participation in each program).*
3. If the program planner for the existing program/meeting approves the double booking, please ask them to email the Membership Services Manager nicole.lee@sfcf.org to confirm. [*The SFCP office will only schedule double bookings with written consent from the existing program planner*]. If the program planner expresses concerns about the scheduling conflict, you will need to find another date for your program. If you and another program planner cannot come to an agreement regarding a scheduling issue, please contact Administrative Director marcia.hodges@sfcf.org who will attempt to help resolve the difficulty.
4. In order to respect important days of observance for our members, no programs or meetings can be scheduled (either in-person or remotely) on dates designated as [SFCP Holidays](#). The goal of this initiative is for SFCP programs, classes, and meetings to be accessible to anyone who wants to come, including those whose cultural holidays are not protected by national holidays. For ongoing programs, please look ahead to upcoming years to plan accordingly.

Note: *We understand and regret that these scheduling procedures will add extra steps to your workload. It is our best attempt to find a compromise that both supports staff in dealing with scheduling conflicts, and also supports the community aspect of our Center by avoiding competing programs and respecting all members' efforts in program planning and committee service to SFCP.*

SFCP Community Members - Mentoring Program!

Would you like to meet with an analyst to discuss your questions about psychoanalytic thinking and clinical work? We'd love to meet with you! The Mentoring Program at SFCP matches participants with analyst mentors to discuss the mentee's interest in psychoanalytic work.

The Mentoring Program is open to mental health clinicians at all levels of training and experience, who are SFCP Community Members, an easy and fun community to join! Mentors meet once a month with mentees for the academic year.

Examples of Topics to Discuss:

- Information, resources and literature to help a mentee explore particular areas of interest. For example: work with particular populations such as trauma survivors; current thinking about LGBTQ issues; the impact of race, class and culture on psychological life; child work; mindfulness; research about psychoanalytic process; and psychoanalytic interfaces with other fields such as poetry, literature, neurosciences
- How to choose among current activities, programs, courses, and services offered by SFCP that are relevant to the mentee's interests and stage of training
- Questions about developing as a psychoanalytic psychotherapist and about psychoanalytic training
- Connecting the mentee with colleagues who the mentor thinks might be a valuable resource based on the mentee's interest in a particular subject

You must be an SFCP Community Member to apply for this program, here is the link to become a Community Member: <https://www.sfcps.org/community-membership/>

And here is the link to the Mentoring Program: <https://www.sfcps.org/community-members-mentoring-program/>

"I'm new to private practice and was looking to get mentoring and support from someone with a deep knowledge of psychotherapy. During our initial meetings I was able to get several very practical and pressing questions answered and feel more confident about seeing clients in my new private practice setting. We discussed psychoanalytic approaches to working with parents and children, which helped me to move forward with my cases and also to consider aspects that I had not previously considered. I have a particular interest in mindfulness and my mentor put me in touch with a therapist who incorporates mindfulness into a psychodynamic therapy practice. In addition, I work with children and my mentor referred me to the Child Colloquium, where I met other clinicians and heard a very helpful presentation. I feel very fortunate to meet with my mentor as needs arise."

Matt Higgins LCSW, Community Members Mentoring Program

Contact: Holly Gordon, DMH
hollygordon4@gmail.com

COST: FREE to SFCP Community Members.

LINK TO APPLICATION: <https://www.sfcps.org/community-members-mentoring-program/>

QUESTIONS: If you have questions about the program, please contact:

Holly Gordon, DMH hollygordon4@gmail.com




SFCP LIBRARY ANNOUNCEMENT

**THE SFCP LIBRARY IS AN
ENVIRONMENT WHERE
ALL ARE WELCOME!**

The SFCP Library provides document retrieval service from our subscription databases which include: SAGA Journals, Taylor & Francis and Wiley Online Library. If you would like research assistance, please contact the Librarian at: rashmita.sriram@sfc.org.

**CLICK HERE
TO ACCESS THE
LIBRARY'S HOME PAGE.**



November is National American Indian Heritage Month.

The SFCP Library, Archives, and Audiovisual Repository along with The Library of Congress, National Archives and Records Administration, joins in paying tribute to the rich ancestry and traditions of Native Americans. For more information please visit this link: [Native American Heritage Month](#)



Happy Thanksgiving

May the spirit of Thanksgiving fill your heart
and home with happiness, love, and gratitude.





THE ENRICO JONES FUND FOR EQUITY AND EQUALITY

70 people of color received
tuition credits since 2021

- 15 students received tuition credits in 2021
- 25 students received tuition credits in 2022
- 30 students estimated to receive tuition credits through June 2024

Join Us!

Please join us by making your contribution now online, by mail or by phone. Our members' participation in this effort has been excellent, but we need a continuing effort to aid our organization to achieve the diversity of members which we desire. All contributions help!

WAYS TO DONATE

ONLINE:

<https://www.sfcp.org/s/enrico-jones-fund>

BY MAIL:

444 Natoma Street
San Francisco, CA 94103

BY PHONE:

(415) 563-5815

A recipient told us:

"I strongly believe that as a psychoanalytic community, we all benefit from the Enrico Jones Fund's implicit and explicit recognition of the painful racism in our community in need of acknowledgement and repair. And for that I am the most grateful."

Contributions

- 2021: 12 donors, \$28,200
- 2022: 42 donors, \$40,600
- 2023: 36 donors, \$46,600

Total number of donors: 67

**Please note that repeating donors were counted once.*



CHILD COLLOQUIA SERIES

Community in Support of Foster Youth - What is a CASA?

Saturday, December 2, 2023

10am-12pm
SFCP
444 Natoma Street
San Francisco, CA 94103

Presenters:
Kira Steifman, PsyD and
Deborah Weisinger, PsyD

Moderator:
Yen Quoc, PsyD

FREE EVENT!

This is an in-person event only; remote participation is not available.

Both CASA and A Home Within are committed to helping foster youth grow and develop primarily through volunteers.

We will present a vignette of a foster child in the Foster Care System who is matched with a CASA and, perhaps, a therapist through a Home Within. Based upon the vignette, we will discuss needs and challenges that arise through a psychoanalytic lens, referencing journal articles that will be available to those attending. In our conversation with Colloquium Participants, we will examine the home that can be created in the community and within the youth, specifically within relationships to caring adults. Our goal is to help sustain the foster child through the many ups and downs that the loss of their primary home creates, and to promote their success.

REGISTER HERE:



<https://www.sfcps.org/2023-12-02-child-colloquia>



The Child Colloquium Series are offered free of charge through a generous support of the SFCP and the Sophia Mirviss Fund.



YOU'RE INVITED TO SFCP'S

WINE & CHEESE

party

IN SUPPORT OF THE ANNUAL GIVING CAMPAIGN

SATURDAY, DECEMBER 2, 2023
3PM - 6PM

BID ON
VINTAGE
WINES AT THE
SILENT
AUCTION!

HOSTED BY
PAUL AND DENA SORBO
AT THEIR HOME IN MOUNTAIN VIEW
(ADDRESS PROVIDED UPON RSVP)

[PLEASE RSVP HERE!](#)





SCIENTIFIC MEETING

Property, Materiality, Proximity: The Analytic Frame and In-Person Work

Mitchell Wilson, MD is a psychoanalyst, educator, author, and editor. He is currently Editor-in-Chief of JAPA, a Supervising and Training Analyst at the San Francisco Center for Psychoanalysis (SFCP) and a Personal and Supervising Analyst at PINC. He practices in Berkeley, and leads study groups on Zoom.

The working world of the analytic therapist has changed as remote and hybrid forms are every bit as frequent as in-person meetings. Much has been written on these changes, but few have focused on the fundamental difference between in-person and distanced therapy. Questions of materiality, the history and specificity of location, and bodily proximity all are key aspects of the psychoanalytic frame, as Bleger's classic formulations attest. In this Scientific Meeting, two clinical examples highlight these points about materiality, the body, and in-person working. A third example illustrates the challenges patients and analysts face with the return to the office or clinic.

**Monday,
December 4, 2023**

7:30pm - 9pm



In Person at

**San Francisco Center for
Psychoanalysis
444 Natoma Street
San Francisco, CA 94103
1.5 CME/CE Credits**

*This program is free
of charge!*

FOR CME AND PROGRAM INFO:

www.sfcps.org/2023-12-04-scientific-meeting/



SCIENTIFIC MEETING

Property, Materiality, Proximity: The Analytic Frame and In-Person Work

Educational Objectives:

Upon completion of this activity, the learners will be able to:

- describe three elements in Bleger's theory of the psychoanalytic frame.
- describe the ways in which traveling to the therapist's office or clinic differs from Zoom sessions.
- name psychologically usable themes that the materiality of the in-person setting can evoke.

Accreditation Statement for CME/CE Sponsorship and Disclosure Statement



IMPORTANT DISCLOSURE INFORMATION FOR ALL LEARNERS: None of the planners and presenters for this educational activity have relevant financial relationship(s)* to disclose with ineligible companies* whose primary business is producing, marketing, selling, re-selling, or distributing healthcare products used by or on patients.

*Financial relationships are relevant if the educational content an individual can control is related to the business lines or products of the ineligible company.

–Updated July 2021–

PHYSICIANS: This activity has been planned and implemented in accordance with the accreditation requirements and policies of the Accreditation Council for Continuing Medical Education (ACCME) through the joint providership of American Psychoanalytic Association and San Francisco Center for Psychoanalysis. The American Psychoanalytic Association is accredited by the ACCME to provide continuing medical education for physicians.

The American Psychoanalytic Association designates this Live Activity for a maximum of 1.5 AMA PRA Category 1 Credit(s)[™]. Physicians should claim only the credit commensurate with the extent of their participation in the activity.

PSYCHOLOGISTS: The San Francisco Center for Psychoanalysis is approved by the American Psychological Association to sponsor continuing education for psychologists. The San Francisco Center for Psychoanalysis maintains responsibility for this program and its content.

Psychologists attending SFCP events approved for CE credits may report AMA PRA Category 1 Credit(s)[™] toward their CE requirements. Psychologists self-certify the number of hours they have completed on their renewal form (whether online or paper).

LCSWs/MFTs: The San Francisco Center for Psychoanalysis is a continuing education provider that has been approved by the American Psychological Association, a California Board of Behavioral Sciences recognized approval agency.

Psychologists, Social Workers, and Marriage and Family Therapists will be awarded AMA PRA Category 1 Credit(s)[™] on an hour for hour basis; see the program description for the maximum of credits awarded for each program.

Commercial Support: None



When the Clinical Hour Stretches Beyond the Page: Alternative ways to present clinical material

Wednesday, December 6, 2023

6:45pm - Greetings and Socializing

7:00pm – 09:00pm - Program

Storytellers:

Jasmine Khor, LMFT

Private Practice

Tim Kim, PsyD

School Counselor, UHS

Private Practice

Interweaver:

Jyoti Rao, MFT

Private Practice

SFCP, Candidate

SFCP, Associate Faculty

The Asian American Center for Psychoanalysis, Faculty

Moderator:

Clara Kwun, LCSW

Private Practice

Faculty and Member, SFCP

Co-Chair, CCSW

Faculty, The Asian American Center for Psychoanalysis

Location:

Remote via Zoom Conferencing

Program Fee:

Free

To Register:

Click to register for the event
www.sfcf.org/2023-12-06-ccsw/

Questions?

Clara Kwun, LCSW

claraandjon@comcast.net

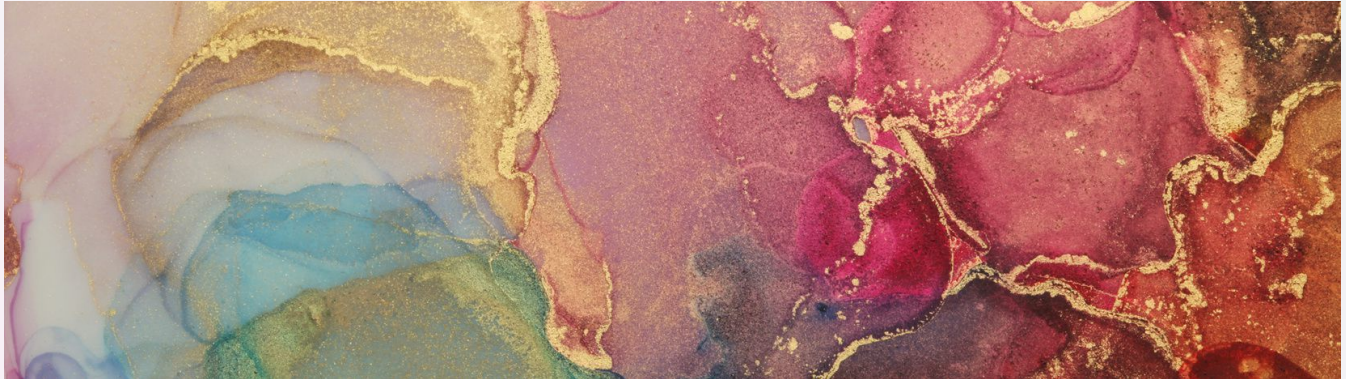
Daniel Yu, LCSW

d.yu.lcsw@gmail.com







Dialogues in Contemporary Psychoanalysis



The Allure of Fascism: A Psychoanalytic Conversation

Increasingly we are observing the rise of proto-fascist parties around the world and in the American MAGA political movement. Building on the fable *The Appointment in Samarra*, the presentation will discuss the characteristic features of fascistic states of mind.

 Saturday, January 6, 2024
9:30 AM - 12:30 PM

 SFCP
444 Natoma Street
San Francisco, CA 94103
(remote participation is available)



Presenter:

**Era A.
Loewenstein, PhD**



Discussant:

**Michael J. Diamond,
PhD, FIPA**

Moderator:

John DiMartini, PhD

\$ 55 — General Admission
\$ 30 — SFCP Members
Free — SFCP and non-SFCP
Candidates, PPTP Trainees and
Students*

To Register:

<https://www.sfc.org/2023-11-11-dialogues-in-contemporary-psychoanalysis/>



3 CME/CE
credits
available!



More information on
accreditation statements
on the following page.



Dialogues in

Contemporary Psychoanalysis

Educational Objectives:

Upon completion of this activity, the learners will be able to:

1. elaborate on the essence of fascism including, its reliance on omnipotent leadership, simplistic ideologies, and inventing an enemy.
2. discuss the clinical implications related to the fascist agenda or erasing memory, truth, and history.
3. describe how the practice of psychoanalysis can be utilized as form of steady, peaceful resistance of the destructive seduction of fascist states of mind.
4. examine the differences and similarities between fascistic states of mind and pathological organization, and primary forms of psychotic structure: paranoia, malignant narcissism and perversion.

Accreditation Statement for CME/CE Sponsorship and Disclosure Statement



IMPORTANT DISCLOSURE INFORMATION FOR ALL LEARNERS: None of the planners and presenters for this educational activity have relevant financial relationship(s)* to disclose with ineligible companies* whose primary business is producing, marketing, selling, re-selling, or distributing healthcare products used by or on patients.

*Financial relationships are relevant if the educational content an individual can control is related to the business lines or products of the ineligible company.

—Updated July 2021—

PHYSICIANS: This activity has been planned and implemented in accordance with the accreditation requirements and policies of the Accreditation Council for Continuing Medical Education (ACCME) through the joint providership of American Psychoanalytic Association and San Francisco Center for Psychoanalysis. The American Psychoanalytic Association is accredited by the ACCME to provide continuing medical education for physicians.

The American Psychoanalytic Association designates this Live Activity for a maximum of 3 *AMA PRA Category 1 Credit(s)*[™]. Physicians should claim only the credit commensurate with the extent of their participation in the activity.

PSYCHOLOGISTS: The San Francisco Center for Psychoanalysis is approved by the American Psychological Association to sponsor continuing education for psychologists. The San Francisco Center for Psychoanalysis maintains responsibility for this program and its content.

Psychologists attending SFCP events approved for CE credits may report *AMA PRA Category 1 Credit(s)*[™] toward their CE requirements. Psychologists self-certify the number of hours they have completed on their renewal form (whether online or paper). Please note that a Psychologist must attend the CE program in its entirety in order to receive credit.

LCSWs/MFTs: The San Francisco Center for Psychoanalysis is a continuing education provider that has been approved by the American Psychological Association, a California Board of Behavioral Sciences recognized approval agency.

Psychologists, Social Workers, and Marriage and Family Therapists will be awarded *AMA PRA Category 1 Credit(s)*[™] on an hour for hour basis. Full attendance is required for psychologists to receive credit; partial credit may not be awarded based on APA guidelines. For the psychologists' records, certificates of attendance are provided at the completion of the course.

Commercial Support: None

Olivia Laing—In Conversation with Daniel Butler

Everybody: A Dialogue about Freedom

Saturday, January 13, 2024

10AM -11:30 AM Pacific Time

ONLINE via ZOOM

1.5 CME/CE Credits available

Educational Objectives:

Upon completion of this activity, the learners will be able to:

1. describe the usefulness of understanding theories of the body in psychoanalysis that affect treatment.
2. examine various theories of the body in illness that affect understanding and treatment of psychosomatic disorders.
3. understand the usefulness of the societal forces against bodily freedom that lead to psychological symptoms seen by therapists.



Olivia Laing
Interviewee

Olivia Laing is widely acclaimed, novelist and cultural critic. The Guardian writes, “Simply one of our most exciting writers”

The front matter to Laing’s newest book, *Everybody: a book about freedom*, reads, “The body is a source of pleasure and pain, at once hopelessly vulnerable and radiant with power. Olivia Laing charts the long struggle for bodily freedom from renegade psychoanalyst Wilhelm Reich to gay rights and sexual liberation, feminism and the civil rights movement. Laing exposes the forces arranged against freedom and a celebration of how ordinary human bodies can resist oppression and reshape the world”.

Olivia Laing is the author of four acclaimed works of non-fiction: *To the River* (2011), *Lonely City*, and *Everybody a Book About Freedom* (2021). Her first novel, *Crudo*, was a New York Times Notable Book and won the 2019 James Tate Black Prize. Her collected writing on art, *Funny Weather*, was published in 2020. She is the recipient of the 2018 Windham-Campbell Prize in nonfiction.



Daniel Butler, LMFT
Interviewer

Daniel G. Butler, LMFT is a psychoanalytic candidate at PINC and a doctoral candidate at UC Santa Cruz’s History of Consciousness Program. He teaches at SFCP and Access Institute and serves on the editorial boards of *Studies in Gender and Sexuality* and the *Journal of the American Psychoanalytic Association*. His writing has received multiple awards, including the Symonds Prize and the Peter Loewenberg Essay Prize. His most recent publication, co-written with Ken Corbett, commemorates the work of Muriel Dimen. His private practice is in Hayes Valley.

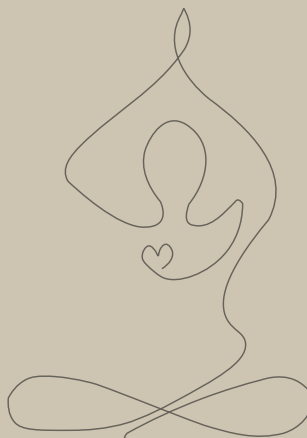
Elizabeth Bradshaw, PsyD
Moderator

Program Fee:

\$40 General Admission

\$20 SFCP Members

Free for Students



To Register, visit:

<https://www.sfc.org/2024-01-13-dialogues-in-contemporary-psychoanalysis/>



Dialogues in Contemporary Psychoanalysis

Olivia Laing—In Conversation with Daniel Butler Everybody: A Dialogue about Freedom

Accreditation Statement for CME/CE Sponsorship and Disclosure Statement



IMPORTANT DISCLOSURE INFORMATION FOR ALL LEARNERS: None of the planners and presenters for this educational activity have relevant financial relationship(s)* to disclose with ineligible companies* whose primary business is producing, marketing, selling, re-selling, or distributing healthcare products used by or on patients.

*Financial relationships are relevant if the educational content an individual can control is related to the business lines or products of the ineligible company.

—Updated July 2021—

PHYSICIANS: This activity has been planned and implemented in accordance with the accreditation requirements and policies of the Accreditation Council for Continuing Medical Education (ACCME) through the joint providership of American Psychoanalytic Association and San Francisco Center for Psychoanalysis. The American Psychoanalytic Association is accredited by the ACCME to provide continuing medical education for physicians.

The American Psychoanalytic Association designates this Live Activity for a maximum of 1.5 *AMA PRA Category 1 Credit(s)*[™]. Physicians should claim only the credit commensurate with the extent of their participation in the activity.

PSYCHOLOGISTS: The San Francisco Center for Psychoanalysis is approved by the American Psychological Association to sponsor continuing education for psychologists. The San Francisco Center for Psychoanalysis maintains responsibility for this program and its content.

Psychologists attending SFCP events approved for CE credits may report *AMA PRA Category 1 Credit(s)*[™] toward their CE requirements. Psychologists self-certify the number of hours they have completed on their renewal form (whether online or paper).

LCSWs/MFTs: The San Francisco Center for Psychoanalysis is a continuing education provider that has been approved by the American Psychological Association, a California Board of Behavioral Sciences recognized approval agency

Psychologists, Social Workers, and Marriage and Family Therapists will be awarded *AMA PRA Category 1 Credit(s)*[™] on an hour for hour basis; see the program description for the maximum of credits awarded for each program.

Commercial Support: None

Please see Policies tab for complete CME/CE credits information.

Join us for an

SA DISCUSSION GROUP

Join us for an SA Discussion Group where we will consider the tension in supervision between authority/role asymmetry/candidate evaluation and promoting analytic growth for both parties.

We hope to build a reflective and engaged community of SA's who are exploring the supervision process together.

SUNDAY, JANUARY 21, 2024

10am - 11:30am

RSVP HERE!



**SFCP
444 Natoma Street
San Francisco, CA 94103**

Discussant: Kirsten Beuthin, LMFT



**Refreshments
will be served!**



The Regional Bion Symposium in conjunction with SFCP presents:

The James Grotstein Memorial Lectures in Comparative Psychoanalysis

On Thomas Ogden's Interpretative Reading of Winnicott and Bion in his Synthesis of British Object Relations Theory and Practice

Saturday, January 20, 2024 | February 24, 2024 | March 9, 2024
Online via Zoom

In honor of Grotstein's work in comparative psychoanalytic theory, and his longstanding friendship and collaboration with Thomas Ogden, there will be a series of 3 virtual meetings featuring Ogden's unique interpretive readings of seminal papers by D.W. Winnicott and W.R. Bion, focusing on the clinical implications of his approach.



Part 1: January 20, 2024

9AM -11AM Pacific Time
2 CME/CE Credits Available

On Thomas Ogden's Interpretative Reading of the Theoretical and Clinical Work of D.W. Winnicott
Presenter: Peter Goldberg



Part 2: February 24, 2024

9AM -11AM Pacific Time
2 CME/CE Credits Available

On Thomas Ogden's Interpretative Reading of the Theoretical and Clinical Work of W.R. Bion
Presenter: Joseph Aguayo

Part 3: March 9, 2024

9AM -12PM Pacific Time
3 CME/CE Credits Available

Panel Presentation on Four Iconic Papers by Thomas Ogden
Panelists: Joseph Aguayo, Maxine Anderson, Peter Goldberg, & Bruce Reis

Participants are encouraged to register for the full 3-part series for maximum immersion; however single lecture tickets are also available.

Pre-registration is required.

	General Admission	SFCP Members	Candidates & Students
Full Series:	\$250	\$200	Free
Single Program Ticket:	\$125	\$100	Free

TO REGISTER AND LEARN MORE, VISIT:



sfcp.org/james-grotstein-memorial-lectures



Accreditation Statement for CME/CE Sponsorship and Disclosure Statement



IMPORTANT DISCLOSURE INFORMATION FOR ALL LEARNERS: None of the planners and presenters for this educational activity have relevant financial relationship(s)* to disclose with ineligible companies* whose primary business is producing, marketing, selling, re-selling, or distributing healthcare products used by or on patients.

*Financial relationships are relevant if the educational content an individual can control is related to the business lines or products of the ineligible company.

—Updated July 2021—

Educational Objectives for “On Thomas’s Interpretative Reading of the Theoretical and Clinical Work of D.W. Winnicott”:

Upon completion of this activity, the learners will be able to:

- explicate how Ogden deploys Winnicott’s ideas about primitive emotional development in his understanding of early object relations and how they organize the way he listens to and understands its development in the analytic situation.
- explicate how Ogden uses Winnicott’s notion of direct and indirect communication in the way he listens in silence as well as when he makes analytic interventions.
- explicate how Ogden deploys Winnicott’s notion of subjective and objective object usage in the way he understands and interprets his patient’s psychological communications.

PHYSICIANS: This activity has been planned and implemented in accordance with the accreditation requirements and policies of the Accreditation Council for Continuing Medical Education (ACCME) through the joint providership of American Psychoanalytic Association and San Francisco Center for Psychoanalysis. The American Psychoanalytic Association is accredited by the ACCME to provide continuing medical education for physicians.

The American Psychoanalytic Association designates this Live Activity for a maximum of 2 *AMA PRA Category 1 Credit(s)*[™]. Physicians should claim only the credit commensurate with the extent of their participation in the activity.

Educational Objectives for “On Thomas’s Interpretative Reading of the Theoretical and Clinical Work of W.R. Bion”:

Upon completion of this activity, the learners will be able to:

- explicate how Ogden deploys Bion’s ideas about how the abandonment of memory and desire clears the analytic field for the operation of clinical intuition.
- explicate how Ogden deploys Bion’s notion of countertransference as originating in a disturbance of feeling in terms of evaluating the emotional aliveness or deadness in analytic session work.
- explicate how Ogden depicts Bion’s style of clinical inquiry in his clinical and supervisory work.

PHYSICIANS: This activity has been planned and implemented in accordance with the accreditation requirements and policies of the Accreditation Council for Continuing Medical Education (ACCME) through the joint providership of American Psychoanalytic Association and San Francisco Center for Psychoanalysis. The American Psychoanalytic Association is accredited by the ACCME to provide continuing medical education for physicians.

The American Psychoanalytic Association designates this Live Activity for a maximum of 2 *AMA PRA Category 1 Credit(s)*[™]. Physicians should claim only the credit commensurate with the extent of their participation in the activity.

Educational Objectives for “Panel Presentation on Four Iconic Papers by Thomas Ogden”:

Upon completion of this activity, the learners will be able to:

- explicate how the analyst can approach and articulate sensory disorders in analytic work.
- explicate how the analyst exists in an intersubjective field with his/her patients.
- explicate the difference in how Bion and Winnicott deploy their distinctive concepts, such as container/contained and holding in the analytic situation.
- explicate some of the differences between Bion and Winnicott’s ideas about the analyst and patient’s experience of the analytic ‘here and now’ moment.

PHYSICIANS: This activity has been planned and implemented in accordance with the accreditation requirements and policies of the Accreditation Council for Continuing Medical Education (ACCME) through the joint providership of American Psychoanalytic Association and San Francisco Center for Psychoanalysis. The American Psychoanalytic Association is accredited by the ACCME to provide continuing medical education for physicians.

The American Psychoanalytic Association designates this Live Activity for a maximum of 3 *AMA PRA Category 1 Credit(s)*[™]. Physicians should claim only the credit commensurate with the extent of their participation in the activity.

PSYCHOLOGISTS: The San Francisco Center for Psychoanalysis is approved by the American Psychological Association to sponsor continuing education for psychologists. The San Francisco Center for Psychoanalysis maintains responsibility for this program and its content.

Psychologists attending SFCP events approved for CE credits may report *AMA PRA Category 1 Credit(s)*[™] toward their CE requirements. Psychologists self-certify the number of hours they have completed on their renewal form (whether online or paper).

LCSWs/MFTs: The San Francisco Center for Psychoanalysis is a continuing education provider that has been approved by the American Psychological Association, a California Board of Behavioral Sciences recognized approval agency

Psychologists, Social Workers, and Marriage and Family Therapists will be awarded *AMA PRA Category 1 Credit(s)*[™] on an hour for hour basis; see the program description for the maximum of credits awarded for each program.

Commercial Support: None

Member Announcements!

Recently Retired? Big Anniversary?
Special Announcements? Milestones?

A Member's Passing?

We want to acknowledge our members' milestones, achievements, and other announcements! Please email nicole.lee@sfcpc.org if you want to share your news so that we can post it in the newsletter!



OFFICE FOR RENT

As many of you know, I relocated permanently to Texas a few years ago and while I still see many patients in California, my work with them is via video and phone. I have a beautiful office that will be available in January 2024 at 1700 Pierce Street, which is a very well-maintained building with a congenial group of mostly psychoanalytic clinicians. The building is managed by a group of analysts of which I am one rather than by an outside landlord. We are very dedicated to maintaining an ideal environment for doing this kind of work.

The office is 175 square feet and has its own thermostat which includes heat and air-conditioning. It is well sound-proofed and the property is quite secure. The carpeting and window dressings were replaced 2 years ago and the office was repainted at that time. There is elevator access to the suite which has a common waiting room and a kitchen as well. There is excellent air filtration. We meet ADA requirements. Utilities and janitorial service is included in the rent. I hope to find someone who can take over my lease. I expect that a prospective tenant will be able to use it for at least 7 years. It could be shared with another person or used full-time by one clinician.

Rent is \$1450 per month. If you are interested, please contact me via email or phone. I will show you photos upon request.



FOR INQUIRIES, CONTACT: JEREMY ORGEL, MD
(415)776-9215
JORGELMDPC13@GMAIL.COM