

SAN FRANCISCO CENTER FOR PSYCHOANALYSIS



WHAT'S IN THIS ISSUE

Click the links below to get to the desired page.

- [Board of Trustees Report - 1](#)
- [President's Report - 3](#)
- [Strategic Plan Update - 5](#)
- [Equity and Inclusion Report - 6](#)
- [Report from PED Chair- 7](#)
- [CME/CE Updates - 10](#)
- [Report from CAPPTP Chair - 11](#)
- [Library Announcement - 12](#)
- [Incoming PED Candidates Bios/Photos - 13](#)
- [Incoming CAPPTP Trainees Bios/Photos - 17](#)
- [Incoming PAPPTP Trainees Bios/Photos - 22](#)
- [Incoming SFPPTP Trainees Bios/Photos - 27](#)
- [Enrico Jones Tuition Fund - 41](#)
- [CCSW Event - 42](#)
- [Child Colloquium Event - 43](#)
- [Scientific Meeting Event - 44](#)
- [Member Announcements - 45](#)
- [Ads and Other Events - 46](#)

For newsletter submissions, email: office@sfcf.org.

SFCP BOARD OF TRUSTEES REPORT

*Brett Penfil, MFT, MPH
Chair, Board of Trustees*

Happy Fall and welcome back to SFCP for the 2023-24 academic year.

As the new Chair of the Board of Trustees, I'm using my first newsletter article to provide an overview of the Board, introduce myself, and share highlights of the Board's upcoming year.

As a governing body of SFCP, the Board oversees the organization's vision and finances as stipulated by the bylaws of the organization, which you can read [here](#). The Board performs essential activities such as strategic planning, fundraising, and building management. The Board's membership is composed of approximately half analyst members (called Analyst Trustees) and half community members (called Community Trustees). The latter can be either non-analyst members of SFCP (community or associate members) or people from outside our membership who bring necessary expertise onto the Board (for example, financial expertise).

SFCP Board Report cont.

Trustees and the Chair each serve three-year terms. The Board meets monthly from September through June, culminating each academic year with the Annual Meeting during which the Board gives a “state of the organization” update to the full membership. All SFCP members are welcome to attend Board meetings (except for the rare executive session during which confidential matters are discussed). If you’d like to attend, please contact Marcia Hodges or me (brett@brettpenfil.com).

The Board functions through a committee structure. The standing committees of the Board are:

- The Nominating and Governance Committee: responsible for nominating SFCP’s President, Board Chair, and Board Trustees and for overseeing the functioning of the Board
- The Finance Committee: responsible for overseeing SFCP’s assets and budget
- The Annual Campaign Committee: responsible for managing the yearly fundraising activity
- The Building Committee: responsible for maintaining 444 Natoma, SFCP’s largest asset

If you are interested in joining the Board or have any questions about our organizational structure, please reach out to me (brett@brettpenfil.com).

For those whom I have yet to meet, I am a PPTP alumna and former SFCP Board member. I served on the Nominating and Governance Committee and, after my term ended, continued to support the Board’s strategic planning. I was also a participant in Ken Eisold’s consultation, which was a psychoanalytic organizational consultation in 2019 that helped lead to some of the current changes in SFCP, including the Inclusion and Exclusion work. I practice psychotherapy from my office in Upper Fillmore. In addition, I work in leadership and organizational development almost exclusively in healthcare and education reform. My clients range from physician leaders at UCSF to Medicaid Directors across the country to leaders at the forefront of equity in K-12 education. I provide one-on-one coaching, team development, and organization-wide training and consultation. I am delighted to bring my long-held interests in organizational development and psychoanalytic thought together in my new role.

This year the Board of Trustees will continue to oversee the implementation of the strategic plan that was created last Fall. Thank you to everyone who held October 22nd on their calendars for the mission statement development work. We have postponed that session so that SFCP members can attend the Celebration of Life for Erik Gann, which will be held by his family on the same day. Erik was an esteemed analyst who played a central role in the creation of and ongoing success of the Center. (I was personally grateful for his support as my mentor during the PPTP.) As soon as we have details about his memorial, we will share them. We are looking at the overall SFCP calendar now for a new date for the mission statement session and will send notice of a new date once we have it. This year the Board will also engage in the Equity and Inclusion work. (Please refer to page 6 of this newsletter to see an update from the E&I Steering Committee.)

In laying out our structure and our upcoming tasks, I am hoping to bring the Board more into members’ consciousness as an essential part of the whole organization. As Maria Longuemare emphasized in her remarks as SFCP President in June, we want members to engage with SFCP as a whole object rather than a part object. I want to thank everyone who participates in the organization and encourage those of you who are still looking for your place in our organization. If you want to engage in the ongoing creation of SFCP and aren’t sure where to start, please reach out to me. In addition to fulfilling the usual duties of the Board Chair, I hope to make SFCP a welcoming professional home for all of us.

Warmly,
Brett

SFCP President's Report

“One single truth does not exist. History is never complete. Everyone narrates from their point of view, from the role they have played in the scheme of things. And when they intertwine, these narratives are transformed, enriched, they become more complex...Understanding the losses allows us to understand the magnitude of the damage, sense the immense universe of suffering, longing, and lost love that becomes mixed up in the projection of the past, the solitude of the present, and the challenge of building the future.”

Museo Casa de la Memoria
Medellin, Colombia

This quote is taken from the entrance to the main exhibit in the [Museo Casa de la Memoria](#) (House of Memories museum) in Antioquia, Colombia – a region that has endured decades of factionalized violence and the resulting breakdown of the most basic human rights, spanning generations. The museum, which I visited over the summer, is dedicated to the project of “open and plural, critical and reflective dialogue” with representation from all parties, in an effort to overcome these conflicts. A nation-wide societal reintegration project is similarly committed to the perspective of taking collective responsibility both for the destruction and the process of repair, with the understanding that larger group dynamics shape the perceptions and actions of individuals. Thus, everyone has a role in what happens (past, present and future), and everyone must be included in the process of finding ways to go forward as a society. This seems a powerful perspective to consider more generally – an essentially psychoanalytic perspective – grounded in the necessity of creating space to view events from multiple vantage points; to seek an understanding of the way powerful emotions can narrow the range of meanings (conscious and unconscious) that we assign to our own experience and the experience of others; and to work to remove these obstacles which limit our creative potential to work together as a group.

Since its inception, the field of psychoanalysis, and we at SFCP have experienced our own share of conflicts, many of which derive from larger societal dynamics which have taken up residence in our systems and traditions. These unconscious processes challenge our capacity to conceptualize ourselves as part of a larger collective, and many in our organization identify more with a small group of individuals or programs, rather than the Center as a whole. While this arrangement may promote strong bonds and a certain efficiency in working together in some cases, in the worst case scenario, it also creates silos and conditions that are ripe for splitting and projection amongst various groups. The isolation and interruption in our programs produced by the recent pandemic has further limited the opportunity to develop working relationships across different parts of the organization, and has intensified the challenges of working together across differences.

Fortunately, throughout the 2022-23 academic year, a number of individuals have stepped in to fill vacant positions and to reinvigorate dormant programs, and several new initiatives are now underway to address our group life, including the strategic planning process, the hiring of an organizational consultant, and an increased attention to the study and understanding of group and societal processes in our psychoanalytic educational programs.

SFCP President's Report cont.

For the upcoming 2023-24 academic year, I would like to set a goal for SFCP as an organization to continue our efforts to rebuild, but to do this somewhat differently than we have in the past – *now with an increased focus on our group life and our organizational culture*. As a first step in this process, a Center-wide community meeting is being planned to craft a new **SFCP Vision & Mission statement**. More information about this process is included in a separate article in this newsletter. [Please note that the Mission Planning meeting was originally scheduled for October 22nd, but this has been postponed due the *Celebration of Life Service for Erik Gann* which is now taking place on that same date – more info on Erik Gann's service will be announced soon].

We have much to learn from one another. As is well-articulated in the *Museo Casa de la Memoria* exhibit, when conditions are created for our different narratives to intertwine, they are transformed and enriched by that process. I very much look forward to working with all of you in the upcoming year!

Update from the Strategic Plan Operations Team/Mission Date Postponed

The team has been working toward the SFCP Vision and Mission Planning Meeting which had originally been scheduled on Sunday, October 22nd. We have just learned that the *Celebration of Life for Erik Gann* has now been planned for that day. The Leadership Team has decided we want to have the best attendance possible for both Erik's Celebration of Life and the SFCP Mission Meeting. So we have decided to postpone the Mission Meeting. Apologies to all of you who had blocked out your calendars to attend. We will work to reschedule in the near future.

Updates from the Strategic Directions Teams:

Leadership Development Team was not able to meet due to conflicting travel schedules. Will be meeting again later in September.

Promoting and Inclusive Reflective Organization - This team has chosen to pause its work now that the Board has hired David Luna to lead the Equity & Inclusion (E&I) Core Task Team in a Center-wide organizational consultation. We want to thank the following members for their work thus far: Ari Bachrach, Cindy May and Jennifer Merovick.

Energizing the Membership Team has focused so far on three tasks:

1. Facilitating member involvement in the activities of the Center by establishing a database of opportunities for involvement, which would be published in the Newsletter, displayed on the SFCP website, and periodically advertised through emails.
2. Developing a welcome package for new members of the Center orienting them to the Center and the opportunities for participation in the life of the Center.
3. Preparing suggestions for the new Strategic Plan, emphasizing the importance of voluntary participation in the life of the Center.

Please reach out with any questions or input you have – we'd love to hear from you!

Sincerely,

The Strategic Plan Operations Team

Brett Penfil
Maria Longuemare
Ari Bachrach
Deb Fletcher
Paul Sorbo
Meryl Botkin
Marcia Hodges

Report from the Interim Equity and Inclusion (E&I) Steering Committee

Greetings from the SFCP Interim Equity & Inclusion (E&I) Steering Committee!

This is the first of what will be regular communications meant to keep the entire SFCP community informed of our committee's work and the progress of SFCP's Equity & Inclusion initiative in general.

Our committee exists because SFCP needs to do further work to process and integrate the changes in our Center following the work of the Anti-Racism Task Force, the Strategic Planning process, a series of community meetings, the acceptance of new training standards at SFCP to increase the accessibility of psychoanalytic training, and the reality that the work of dealing with issues of equity and inclusion on personal and group levels is very much an ongoing process, at times a contentious and painful process.

The members of our interim committee are Chuck Fisher, Debora Fletcher, Marcia Hodges, Clara Kwun, and Beth Steinberg. We are working with David Luna, the E&I consultant hired by SFCP after a lengthy and thorough search and selection process. David has decades of experience in E&I consulting, and he has served organizations of all sorts throughout the country. Our committee exists to provide initial guidance and oversight to the further work needing to be done.

In our first two meetings, we have laid groundwork for how we will work as a group, drafted a very preliminary E&I Vision Statement for SFCP (just enough to guide our work for the time being), and clarified the specific mission of our committee. In our next few meetings, we will be brainstorming how we might expand the committee to include more perspectives and voices so as to engage the broader organization. We also will begin to brainstorm the major pieces of E&I work that SFCP needs to do and a preliminary priority order for those pieces.

One of our committee's key values and commitments is to be as transparent as possible as often as possible to the whole SFCP community. With this in mind, please expect to hear from us often.

Warm regards,

Chuck Fisher, Debora Fletcher, Marcia Hodges, Clara Kwun, and Beth Steinberg

Stay tuned for the E&I Resources Webpage with resources and information about the history of E&I at SFCP and nationally! In the meantime, for more background on this initiative, please see Excerpts from the [Proposal to the SFCP Board for Equity and Inclusion Consultant](#).

Report from the Chair of the Psychoanalytic Education Division

Dear SFCP Community-

Welcome Back!

It is hard to believe that September is already here and that we are starting a new academic year at SFCP! On behalf of the PED, I want to welcome our new first year candidates: Thomas Adams, MD, Lucas Broster, MD, PhD, Maria Renu Cappelli, MA, PhD, Lauren Cardillo-Geller, LCSW, PhD, Megan Goodwin Germano, PsyD, Garrett Howard, LMFT, Cindy May, PsyD & Tua Mulligan, MD. I also want to welcome back our continuing candidates!

We are beginning the year with the Psychoanalytic Training Program in a strong position, with approximately 30 candidates in seminars and an outstanding group of faculty teaching. This also promises to be an exciting year as classes for the incoming cohort in 2023-24 and beyond will be held mostly in-person for candidates, and instructors will also be encouraged to participate in person to the greatest extent possible.

I am also extremely pleased to announce our current roster of Chairs on the PED Committee: Chair: Beth Steinberg; Vice-Chair: Bill Glover; Dean: Leora Benioff; Secretary: Catherine Mallouh; Admissions Co-Chairs: Maureen Ruffell & Dena Sorbo; Child/Adolescent Analytic Program Co-Chair: Marsha Silverstein; Curriculum Committee: Maria Longuemare, Chair & Adam Goldyne, Associate Chair; Progressions and Graduation Committee (PGC): Karen Johnson; Supervising Analyst Committee: Holly Gordon; Training Analyst Chair: Michael Donner; Advisor/Mentorship Committee: Suzanne Klein; Candidate Representatives: Doug Slakey & Megan Goodwin; Committee on Psychoanalysis Across Disciplines (CPAD): Naomi Janowitz; & Outreach Committee: Adam Goldyne.

This summer the PED announced several important policy and procedure changes, as well as some important new initiatives.

1. Beginning Fall 2023, the PED will be offering the Affordable Training Analysis and Supervision Program for Equity and Diversity. In accordance with the January 2023 ratification vote by all analyst and candidate members (based on majority-supported initiatives in the All-Member Survey on Diversity & Accessibility in Analytic Training - Fall 2022), this program is meant to lower costs of analytic training for BIPOC candidates and candidates with financial need. The goal is to make psychoanalytic training more affordable and accessible to individuals affected by systemic inequities (e.g. race-based or class-based inequities) which have previously served as barriers to pursuing analytic training. All Training Analysts (TAs) are being asked to offer one affordable training analysis (less than \$100 per session) to a BIPOC candidate or a candidate with financial need, and all Supervising Analysts (SAs) are asked to offer one affordable supervision (\$25 or less) to a BIPOC candidate or a candidate with financial need. Interested candidates who self-identify as BIPOC and/or who self-identify as having financial need who are

Report from the Chair of the Psychoanalytic Education Division cont.

enrolled in the SFCP Psychoanalytic Training Program or have accepted an offer of admission may consult the Directory of SFCP [Training Analysts](#) and [Supervising Analysts](#) on the SFCP Website or the SFCP Analytic Training Program Webpage to find SFCP TAs/SAs who have indicated availability for Affordable Training Analysis and Supervision. To learn more, please see a more detailed description of the Affordable Training Analysis and Supervision Program on the [SFCP Website](#) and the Analytic Training Webpage for TA/SA availability.

2. The PED Committee voted to approve New Post-Covid Requirements for Supervision, Control Cases and Personal Analysis as of September 2024. The new requirements emphasize respect for the existence of ongoing medical concerns while re-emphasizing the importance of in-person experience during analytic training where possible. These new requirements are being treated as provisional and will be reviewed after one year with the help of feedback from the community. Please see the [Candidate Handbook](#) for these new Policies and Procedures, as well as the new policies and procedure about requesting Exceptions.

Also please note: The PED Committee will host an informal meeting on October 21 from 10 am - 12 noon (via zoom) to discuss any questions/concerns about these upcoming changes. Please stay tuned for more details about this meeting.

3. The SFCP Candidate Graduation Paper Salon Pilot Program is being piloted for recent graduates and candidates (who have both completed the Graduation Paper Writing Seminar and have received a Faculty Reader's approval of their graduation paper) to present their graduation papers to the SFCP community. Chaired by Henry Markman, this program is intended to promote an ethos of scholarship and independent thinking among the rising generation of psychoanalysts. Please see a more detailed description of the Graduation Paper Salon Project [here](#).

4. The PED announced revisions to the "Instructor and Supervisor Concerns about Candidate Participation" policy, which had intended to provide additional routes of communication among and between PED Chairs and candidates in order to better support candidates' development and to be able to intervene supportively as early as possible when either instructors, supervisors or candidates raise concerns about candidates' experiences in training. For more details, please see this policy, now revised, in the [Candidate Handbook](#).

5. We also announced the new [Candidate Evaluation Form](#) developed by the PGC for instructors to fill out at course completion. Given that candidates are only reviewed annually by the full PGC, this form allows the Dean to be aware of any issues in ongoing classes that may be helpful to address with candidates throughout the year, as well as being able to more fully capture each candidate's unique presence, learning style, and participation in the group.

BETH STEINBERG, PHD
CHAIR, PSYCHOANALYTIC EDUCATION DIVISION

Report from the Chair of the Psychoanalytic Education Division cont.

I also wanted to let people know that I continue to be actively working to re-invigorate and re-imagine our Visiting Professor as well as our post graduate education programs. These have been dormant since Covid, and many people have expressed to me that these highly valuable programs are sorely missed. I am seeking people interested in serving on these committees. If you are interested in participating, please contact me (besteinberg@comcast.net) and we can re-imagine it together!

Please feel free to contact me (besteinberg@comcast.net) if you want to contribute or have any questions.

CE/CME Updates!

SFCP awards CE/CME to 50-100 classes and programs a year! This is an important benefit to our members who can earn CE/CME as students or teachers in many of our classes. However in the past year, the CE/CME process has had some notable changes.

Over the past month, with the generous help of Mary Ewert, DMH and Aaron Chow, I have been learning both about SFCP's many programs and the CE/CME process. The biggest change is a new form, the JPPF (Joint Provider Planning Form) that is required by APsA for any class requesting CME credits. The JPPF is long and at times counter-intuitive, a form created for medical continuing education writ large but not tailored to psychology or analytic classes specifically. Mary Ewert, over the past 6 months, has been aiding instructors in the process of filling out this form, and I am working on an explainer that I hope will guide instructors through the process of completing the form.

If you want to apply for CE/CME for your classes, here are some guidelines for the process:

-Before you begin, read through the instructions on SFCP's website under "Services and Resources"/"For Program Planners"/"CEM/CE application forms" fill out and be sure to download forms from the bottom of that webpage. Even if you think you have recent forms, with the various revisions in the past year, you may not.

-Please submit your completed forms 8 weeks in advance of your start date. Forms need to be submitted in Microsoft Word, typed.

-Send forms along with CVs for each instructor, and syllabus to Aaron Chow and Megan Goodwin

-Aaron Chow will send the packet of forms to me for review

-I will reach out to you with any revisions to be made

-When revisions are complete Aaron Chow will send to APsA for final approval

Don't hesitate to reach out with any questions!

Megan Goodwin, PsyD
emegangoodwin@gmail.com

Report from the Chair of the Child and Adolescent Psychoanalytic Psychotherapy Training Program (CAPPTP)

CAPPTP has begun classes for our 2023-2025 cohort. With a group of 9 students not only from around the state but from around the world, we are celebrating having both our largest cohort in years, and one of our most diverse cohorts ever. The range of work begun done by this cohort covers the gamut - from a participant working at a children's hospital in China to one doing dynamically oriented outreach to homeless youth in Oakland. The reach of our program's efforts to bring psychoanalytic thinking to clinicians working with children has never been broader and it is incredibly exciting.

CAPPTP currently looking for analysts and analytic psychotherapists interested in joining our steering committee to help with the day to day work of keeping our program running. There are spaces available on all of our committees for clinicians interested in getting involved in supporting this exciting project.

CAPPTP has openings for steering committee co-chairs.

The role is open to analytic child therapists, child analysts, and analysts who see children in their practices. SFCP members with strong administrative and organizational skills, please consider this rewarding volunteer position. The CAPPTP steering committee is a high functioning team of committed volunteers supporting the functioning of a very diverse and lively psychotherapy education program. Most weeks the role requires about 1 hour of work per week. The outgoing chair will continue on the steering committee and be available to advise and support the incoming chairs as they acclimate to the role. Please reach out to the program administrator, Tina Phu - Tina.Phu@sfcps.org if you are interested in learning more about the role

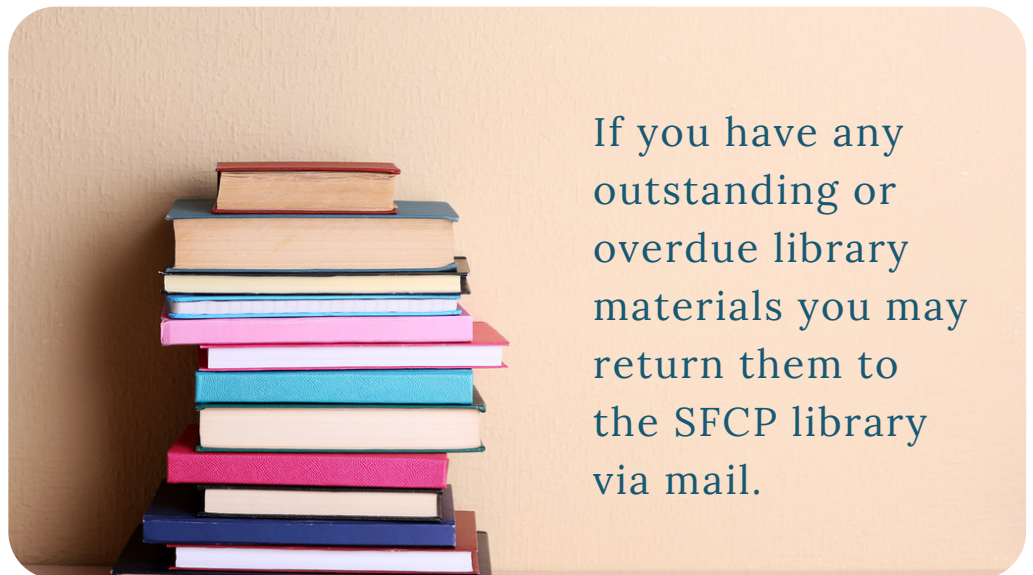


SFCP LIBRARY ANNOUNCEMENT

You may check out and return library materials at the reference desk (librarian's desk) anytime you are at the center. Numerous print and online resources are available to you, including books, journals, databases, and audio-visual materials. The SFCP library aims to create an environment where all people feel welcome, respected, and safe and have equitable opportunities and access to all our resources.



**CLICK HERE TO
ACCESS THE LIBRARY'S
HOME PAGE.**



If you have any outstanding or overdue library materials you may return them to the SFCP library via mail.

RASHMITA JANI SRIRAM AT RASHMITA.SRIRAM@SFCP.ORG

PLEASE WELCOME OUR
INCOMING
2023-2024
PED CANDIDATES



Thomas Adams, MD

I grew up in Southern California, went to Pomona College, then spent a couple years as a high school and middle school tutor and substitute teacher, before starting medical school. I became interested in psychoanalysis through my own experience in therapy in college and after, and the interest grew during my psychiatry residency. In residency, I met my partner and now wife, Emily. We have been living in Bay Area for just over a year, and we're happy to be here. Some of my other interests include hiking, neuroscience, tennis, and board games. I'm excited to be starting training, and looking forward to many years of learning and growth in this community.

Lauren Cardillo-Geller, LCSW, PhD

Born and raised in New York, I have now lived in California for 16 years and have truly come to appreciate the beauty of life on this coast! I received my LCSW and PhD from Columbia University School of Social Work and practiced in several community mental health clinics providing psychotherapy for individuals, families and adolescents. My doctoral research focused on understanding traumatic grief processes in a cohort of families in which the father was a firefighter killed in the 9/11/01 World Trade Center attacks. Having always resonated with psychodynamic ways of thinking, my training through SFCP's Fellowship year and PAPPTP allowed me to begin to deepen treatment

and to develop an analytic sensibility in my private practice work with adolescents and adults. As I begin the journey of analytic training, I am taking a deep breath, one of both relief and of awe. Relief, in coming full circle to the kind of work that I always knew I wanted to do and awe, for the vast knowledge and experience that lies ahead. I look forward to opening up to what I do not know and to more fully learning how to use myself and what develops in the analytic relationship to create change and more psychological freedom for those who are suffering. The chance to learn amidst the SFCP network of wise and caring colleagues and teachers is one I am truly grateful for.





Megan Goodwin Germano, PsyD

I am a California native, having lived in the Bay Area for the past 18 years and before that, the Monterey Bay area. I attended UC Santa Cruz, and the PGSP-Stanford PsyD Consortium.

I was introduced to psychoanalysis through my own analysis and was inspired to pursue this path to deepen and improve my own work, and to enrich my own as well as my patients' lives. It was a true

pleasure to be a recent PAPPTP participant which further clarified my desire to dive into learning how to think and practice analytically.

I am excited to be joining my class this fall as we grow and learn together and am grateful to be a part of a community that is so dedicated to lifelong learning and teaching.

I have a private practice in San Carlos, where I work with adults. I am also the current CE/CME chair and hope to be of service to the SFCP community in this capacity.

Garret Howard, LMFT

Garrett Howard is a Licensed Marriage and Family Therapist. He currently sees adolescents and adults in private practice in San Francisco. He received his M.S. in Clinical Psychology from San Francisco State University, and completed the two-year post-graduate psychodynamic psychotherapy training program at The Psychotherapy Institute in Berkeley, as well as the Psychoanalytic Psychotherapy Training Program at SFCP. In addition to private practice, he has worked in community based mental health and clinic based settings, and has taught undergraduate Developmental Psychology at SFSU. He is perpetually inspired by the depth, expansiveness, and humanistic attitude offered by psychoanalytic ways of thinking and being, and is looking forward to continuing to deepen his practice.





Maria Renu Cappelli MA, PhD

I live and practice in San Francisco. My first introduction to the study of psychoanalysis was in the context of academic work in the Humanities, particularly theater, art and performance; as well as in critical theories of gender, sex, and race. I taught in University settings for several years, prior to retraining in clinical psychology and developing my practice. In approaching psychoanalysis anew as a clinician, my main compass points have been my own personal analysis and the guidance I've received in consultation. I look forward to depth in clinical work, and breadth in research, that I hope will be the results of psychoanalytic education.

Candidates with No Picture or Bio

Lucas Broster, MD, PhD

Cindy May, PsyD

Tua Mulligan, MD

PLEASE WELCOME OUR
INCOMING
2023-2024
CAPPTP TRAINEES



Will Chen

Qualification:

- Assistant Psychologist for the Registration System of the Chinese Psychological Association
- National Level 2 Psychological Counselor

Work Relationships:

- Counselor at the College Student Mental Health Counseling Center of Huzhou Vocational and Technical College
- Senior consultant and teacher at Sichuan Heguang Clinical Psychology Research Institute
- CIC (CAPA in China) supervisor and teacher

Training background:

- Project: Zhejiang Province Supervision Station Case Supervision Training (2015-2017) Graduation
- Project: CAPA Junior Group Training (2016-2018) Graduation
- Project: CAPA Advanced Group Training (2018-2020) Graduation
- Project: China Psychological Association Registration System Ethics Training (2018, 2021) Graduation
- Project: Training for Psychodynamic Supervisor at Sichuan Heguang Clinical Psychology Research Institute (2021-2022) Graduation
- Project: Training for Children and Adolescents at the San Francisco center for Psychoanalysis in the United States(2023-2025) Attending

Personal analysis has been conducted since 2016 and has ended; Accepting individual and group supervision recognized by the Chinese Psychological Society registration system, including weekly two-year individual supervision and CAPA group supervision by Manny Rich, an American training and supervising analyst, starting from 2016, and weekly two-year individual supervision and CAPA group supervision by Marilyn Lamonica, a contemporary Freudian school, starting from 2018, Since 2020, I have received weekly training and training from the Chicago School of Analysis, with individual supervision from training and supervising analyst Thetis Cromie and group supervision from Sichuan Heguang Clinical Institute. Clinical psychological work hours exceed 7000+hours.



Tamar Schilgi Mamou, LMFT

My name is Tamar Schilgi Mamou (She/her) and I am thrilled to start the SFCEP Child and Adolescent Psychoanalytic Psychotherapy Training Program with you all. I'm looking forward to getting to know you all.

I have been a Licensed Marriage and family therapist since 2018 and I have a private practice in Sunnyvale CA. I mainly work with children and families but I also see adults, individuals and couples.

I love working with children and see myself concentrating on that even more in the future. In my practice, I use play therapy and formulate my treatment studies from a psychodynamic and attachment frame.

I was born and raised in Israel and immigrated to the US in 2007 to California. I have my Master degree from Israel in Educational Counseling and I worked as a school counselor. I earned my Master Degree in Counseling psychology at the Wright Institute in Berkeley CA in 2013.

When I am not working, I am a mother of two kids and lives with my partner in Sunnyvale CA. I like meeting friends, walking, reading, watching movies and art.

Sushil R Puskur, MD, MS, FAPA

I am a child, adolescent, and adult Psychiatrist in private practice since 2008 in Ocala, Florida.

Over the years, I have worked in community in-patient, community out-patient, Juvenile detention centers, foster care out-patient, foster-care residential and girl's residential settings.



I enjoy working with young people and try to put them on a better trajectory.

I look forward to increasing my understanding of child development so I can be more effective therapist.



Tamar Schilgi Mamou, LMFT

My name is Tamar Schilgi Mamou (She/her) and I am thrilled to start the SFCEP Child and Adolescent Psychoanalytic Psychotherapy Training Program with you all. I'm looking forward to getting to know you all.

I have been a Licensed Marriage and family therapist since 2018 and I have a private practice in Sunnyvale CA. I mainly work with children and families but I also see adults, individuals and couples.

I love working with children and see myself concentrating on that even more in the future. In my practice, I use play therapy and formulate my treatment studies from a psychodynamic and attachment frame.

I was born and raised in Israel and immigrated to the US in 2007 to California. I have my Master degree from Israel in Educational Counseling and I worked as a school counselor. I earned my Master Degree in Counseling psychology at the Wright Institute in Berkeley CA in 2013.

When I am not working, I am a mother of two kids and lives with my partner in Sunnyvale CA. I like meeting friends, walking, reading, watching movies and art.

Sushil R Puskur, MD, MS, FAPA

I am a child, adolescent, and adult Psychiatrist in private practice since 2008 in Ocala, Florida.

Over the years, I have worked in community in-patient, community out-patient, Juvenile detention centers, foster care out-patient, foster-care residential and girl's residential settings.



I enjoy working with young people and try to put them on a better trajectory.

I look forward to increasing my understanding of child development so I can be more effective therapist.



Yangqing (Daisy) Zhang, MS

National licensed counselor in Hangzhou, China
Private practice setting with children(few),
adolescence(many) and adults(most).

Used to work in an international school as a
counselor

Internship in Mental Health Center of Zhejiang
University in 2017

MS in Human Development and Family Studies
in Iowa State University 2013-2015

China America Psychoanalysis Association
(CAPA) basic and advanced program 2018-2022
Mom of a 4 year old boy.

HuiFen (Fenny) Zhu

I have been practiced as a psychodynamic
therapist for 7 years , I worked with children,
teenagers and adults. In my training ,I studied
Freud's theory, ego psychology, object relations,
and self-psychology. Most of my training has
focused on adults, and I hope this training will
help me understand more about the minds of
children and teenagers.

Besides work, I like traveling, gardening
,watching movies, and I get the joy and energy
of life from these activities



CAPPTP Trainees with No Picture or Bio

Sam Given-Dennis, MA, AMFT

Lazzuly Mello, MA

PLEASE WELCOME OUR
INCOMING
2023-2024
PAPPTP TRAINEES



Kortni Ferguson MD MPH

Kortni Ferguson is currently a resident at Stanford University Department of Psychiatry. Her current interests include bereavement, trauma, collaborative care, and community psychiatry.

Undergraduate: University of Central Florida

MPH: University of Pittsburg

Medical School: University of Pittsburg

Angela Fowler, MFT

I'm a psychotherapist in private practice in Morgan Hill, CA. I graduated with an MA in Counseling Psychology from Santa Clara University in 2001 and have been licensed as an MFT in CA since 2005. The orientation I work in is psychoanalytic psychotherapy, and I work with adults and couples.

My specialties are: depression, anxiety, and relationship issues.



Dorothy Kong, ASW

I'm Dorothy Woon, LCSW, a newly licensed clinician in the early stages of private practice. My experience has been primarily in community mental health. In my last nonprofit role, I offered field-based individual and family therapy services to youth and their families throughout Alameda County. My field placements during graduate school included supporting adults with SMI in San Mateo County and working with students at an elementary school in the East Bay. I received my MSW from Smith College School of Social Work in 2020. In my free time, I enjoy training in Muay Thai, practicing Yoga, and playing with my 10-month-old dog.



Benjamin Light Kovachy, MD

Ben is a fourth-year psychiatry resident at Stanford who grew up in the Bay Area. After college, Ben was deciding between medical school and graduate school in Psychology, ultimately deciding to pursue training to become a psychiatrist. Ben has been interested in psychotherapy in addition to medication management throughout his training. Last year, he participated in the PAPPTP fellowship year and enjoyed deepening his understanding of psychodynamic work. He is excited to continue learn about psychodynamic therapy with colleagues and further develop his approach and identity as a therapist through the PAPPTP two-year program. Ben hobbies include spending time in the outdoors –hiking, camping, and mountain biking.

Trishna Narula (she/her), MD, MPH

Trishna is a psychiatry resident at Stanford. Her interests include mental health for transitional age youth and young adults, women, and South Asian Americans and other communities impacted by cross-cultural issues, as well as public health, policy, and advocacy. She is looking forward to augmenting her training in psychoanalytic therapy and hoping to be a small part of the field's transformation to a more culturally diverse one. She resides in Cupertino and plans to establish her own psychiatry & psychotherapy practice in the Bay Area after training.





Ryan Pate, MD

I grew up in Louisiana and attended undergrad as well as medical school in the state. Matching for residency at Dartmouth brought me to New Hampshire where I completed my adult psychiatry residency. During training, my partner and I met. Subsequently, he matched for residency at Stanford, and I decided to pursue a fellowship at Stanford in geriatric psychiatry. Training on the east coast, there was emphasis on psychoanalysis and psychodynamics and expectation to

maintain a psychodynamic case. This experience fostered my interest in therapy in general and more specifically psychoanalysis. As I finish training and better gain knowledge of psychiatry and geriatrics, the confluence between psychotherapy and other treatment modalities is continuously elucidated. There is an abundance of experiences older adults have faced and continue to face, and I hope to learn more to better understand my patients, further develop my psychotherapy skills, and deliver fruitful treatment.

Kelsey Caroline Priest, MD, PhD, MPH



I conceptualize human potential and suffering through a multi-level lens informed by my research and clinical training. Through my doctorate in public health, I developed skills in critically analyzing complex systems and policies impacting health and access to care at the population level. In parallel, through my clinical training, particularly as a psychiatrist and psychotherapist, I strive to apply a similar inquisitive framework to understand the complex and dynamic micro-systems (relationships, family systems) that surround individual patients. I am honored to have the opportunity to facilitate a nuanced exploration of patterns and systems within my patients' lives, while simultaneously recognizing the role of broader forces at play.

I am from Portland, Oregon – born and raised. I attended Willamette University for undergraduate, Portland State University for my master's and PhD, and Oregon Health & Science University for my MD. When I am not working you will find me in the hills and mountains hiking with my beloved dogs and husband.



Janelle Ruiz, MD, MS

I am a current resident in the Adult Psychiatry Residency Program at Stanford Health Care. I grew up in Arizona and attended college at Loyola Marymount University in Los Angeles. I attended medical school at Stanford School of Medicine and have a master's degree in clinical research and epidemiology. As a training psychiatrist, I value my medical knowledge, but also value the importance of deepening my understanding of a patient's background and lived experiences to better treat their mental health conditions. This is why I have chosen to undertake additional training in psychoanalysis.

Emily Whistler, DO

After medical school, I completed my residency in general psychiatry at the Medical University of South Carolina. There I was fortunate to learn from multiple psychodynamically oriented mentors in various didactic series and through supervision of my own patient care. This inspired me to continue seeking educational opportunities in various therapy modalities. I am currently a Child and Adolescent Psychiatry Fellow at Stanford University.



PLEASE WELCOME OUR
INCOMING
2023-2024
SFPPTP TRAINEES

Year 1 Section 1



Alexander Acosta, MD

I was born into a large and proudly loud Puerto Rican family outside Chicago in a small town called Portage, Indiana. Growing up in the Midwest but training on the East coast and now continuing my training on the West coast has given me a perspective on this country I'm hoping to bring to our PPTP groups. Now a 3rd year resident at UCSF's Adult Psychiatry Program, I've come to cherish the Bay Area, its abundant access

to nature, and its population that desperately needs more mental health care. When I'm not on call, I enjoy spending time with friends and family, cooking Puerto Rican food, cycling, camping, and bopping around The Castro. I ultimately hope to work in the public psychiatry setting with folks experiencing SMI and also may carve out some time to do couple's work which I've previously found rewarding.

Shanon Astley, MD

Shanon Astley is a fifth year Family Medicine and Psychiatry resident at UC Davis Medical Center, located in Sacramento. Sacramento is where she grew up and she's enjoyed being closer to family during her residency training. She attended medical school at UC San Diego where her interest in psychiatry was born out of her experiences working in a maternal mental health clinic. She has continued to foster her interest in perinatal psychiatry and therapy through her work in a women's mental health clinic and by being a guest therapist in a



peripartum support group. She has found the exploration of psyche development and attachment in her patients and in film to be a fulfilling aspect of her residency experience. She is the founder of Psychiatry Movie Night at her institution which facilitates group meet-ups once a month to explore psychodynamic themes in wide ranging films. Through her training in PPTP, she hopes to deepen her understanding of psychoanalytic theory to continue her work with pregnant and postpartum people. Her interests outside of work include visiting National Parks, hiking, spending time with her two dogs and partner, cooking plant based meals, and gardening.



Eleanor Broh, MSW

I'm a licensed clinical social worker currently working as a clinical supervisor at WestCoast Children's Clinic in Oakland, CA. WestCoast is a psychodynamically-oriented community mental health agency that works with children ages 0 to 21 and their caregivers. I've been at WestCoast since 2017, and previously held clinician roles providing mental health screenings and short-term therapy for youth in foster care, and offering long-term individual and family therapy for kids with histories of complex trauma. I graduated with my MSW from Smith College School for Social Work in 2016. Before graduate

school I worked as a case manager with survivors of crime and abuse, and providing legal services for undocumented immigrants who had experienced gender-related violence. I received my Bachelors degree from Harvard College in 2008, with a concentration in Government and a certificate in Latin American Studies. I speak Spanish fluently, and work in Spanish, English, and Spanglish, though I am not bicultural.

Outside of my paid work, I'm a fiber artist, meaning I sew, knit, weave, spin yarn, dye, and generally make things with yarn and fabric. I love hiking in the East Bay parks with my dog.

Rebecca (Rikki) Feuerstein, MA

Rikki is a fourth-year clinical psychology doctoral student at the Wright Institute in Berkeley, CA. She has trained at community mental health centers and most recently completed a practicum at The Hume Center's Partial Hospitalization Program in Concord, CA, where she provided individual and group therapy for adults with severe and persistent mental illness. She will be training at RAMS this coming academic year. Originally from New York, Rikki earned a Bachelor's degree in Neuroscience and Behavior from Columbia

University. Prior to enrolling in graduate school, she worked in healthcare marketing and consulting for nearly a decade and volunteered at a lay-led suicide and crisis hotline.





Claire Greenwood, MA

"Claire Greenwood is an associate marriage and family therapist living in Oakland, California and a graduate of the California Institute of Integral Studies (CIIS). She is currently completing a private practice associateship in San Francisco, where she focuses on autistic, neurodivergent, trans, non-binary, and LGBTQ+ clients.

A former Zen nun, she spent most of her twenties practicing Buddhism in monasteries in Japan. She also works as the Admissions Director at the Institute of Buddhist Studies, a graduate Buddhist seminary in Berkeley, CA. She holds a

master's degree in East Asian Studies as well as a master's in Counseling Psychology. Claire has been a writer and storyteller since she was old enough to staple loose sheets of paper together and draw pictures inside them. She is the author of three books- ""Radical Self Love: A Journal For Transforming Anger Into Assertiveness and Healing,"" ""Bow First, Ask Questions Later: Ordination, Love, and Monastic Zen in Japan,"" and ""Just Enough: Vegan Recipes from Japan's Buddhist Temples.""

Diane Kim , MSN

"Diane Kim is a Psychiatric/Mental Health nurse practitioner, currently working in private practice in San Francisco where she sees adults for medication management, psychotherapy, and is training to facilitate ketamine-assisted psychotherapy sessions. Previously, she worked at UCSF Langley Porter for nearly four years in the outpatient setting. Diane studied Sociology at Dartmouth College and trained at UCSF, where she received her PMHNP degree. She also recently completed the Psychedelic Therapy Training certificate program through the California Institute for Integral Studies.

As a child of two South Korean immigrants, Diane is passionate about working with patients who are navigating family of origin challenges, as well as inter-generational and inter-cultural conflict and trauma. She is looking forward to beginning her psychoanalytic training with SF PPTP.





Dominic Le, MD

I grew up in San Jose, went to school in North Carolina, and medical school in Chicago. Since my college years I've been drawn to mental health, specifically social determinants of mental health (I studied the effect of maternal obesity on offspring depression in a mouse model!). I'm now a psychiatry resident at UC Davis and entering my 4th year. I'm looking forward to being surrounded by a group of eager, intelligent individuals with a passion for mental health.

June Lin-Arlow, LMFT

June is a Licensed Marriage & Family Therapist seeing adults, adolescents, and families through her private practice in San Francisco. Originally from Texas, she spent 10 years working in the technology industry before transitioning to working in mental health. She holds a M.A. in Counseling Psychology with a concentration in Community Mental Health from CIIS and previously worked as a Child & Family Therapist and Early Childhood Mental Health Consultant at the Homeless Children's Network. She's currently on the Board of Directors of Community Forward SF, which provides mental health and shelter services for homeless women and trans folks. In addition to being a psychotherapist, she is an activist, artist, and plant enthusiast. Though these days she stays busy with being a new mom. "



Beatrice Nichols, MD



"I'm a fifth-year family medicine and psychiatry resident at UC Davis. As a missionary kid, I spent a lot of time during my childhood living in Costa Rica and Chile before settling to be near extended family in Ohio. From there, I graduated from the University of Cincinnati College of Medicine with my medical doctorate before moving to Sacramento for residency.

Within the clinic, I enjoy working with patients who are medically and psychiatrically complex in the outpatient primary care setting, and I have a strong commitment to working with patients who come from underserved backgrounds with continued support from a scholarship

for this through the National Health Scholars Corps. My more specialized interests include global mental health, trauma, and women's mental health - and of course psychodynamic work, which I am looking forward to continuing to develop through the PPTP cohort this upcoming year.

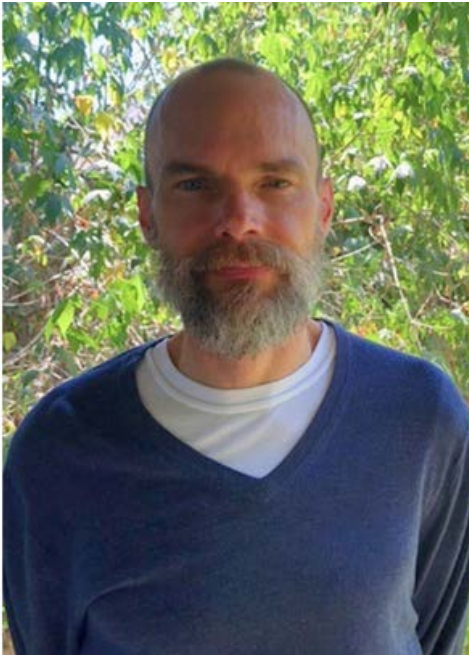
After residency, I hope to stay in the greater Sacramento area doing my service time as I have grown to deeply care for the people in this community. Outside of work, I enjoy spending time outdoors - hiking, biking, gardening, and so on - in addition to spending quality time with my partner and our cats. "

Cristine Oh, MD, MS

Cristine graduated from Yale double majoring in literature and psychology, with a concentration in Women and Gender studies. She completed a post-baccalaureate program at Bryn Mawr and received her MD and an MS in clinical research from the University of Pittsburgh. Before medical school, Cristine engaged in community, public, and volunteer service in various fields. She assisted in asylum cases, volunteered as a rape crisis advocate, and became a bilingual Spanish-English teacher with the Texas Teaching Fellows. She then joined the Peace Corps working with various Moldovan anti-human trafficking



initiatives. Upon returning home, she worked at the U.S. Department of Housing and Urban Development headquarters in Washington, D.C. During medical school, she trained in harm reduction as a volunteer for a needle exchange site as well as the local women's shelter and free clinics. She is currently a psychiatry resident at Stanford's general adult psychiatry program. Cristine's interests include trauma, race, ethnicity, cultural mental health, and women's mental health. She is very excited to join SF-PPTP.



Matthew Settle, NP

Matthew Settle is a Psychiatric Mental Health Nurse practitioner who currently practices at UC Davis Health Adult and Child Behavioral Health Center in Sacramento where he provides medication management and therapeutic interventions to patients across the lifespan. Prior to this, he worked in both adult outpatient general psychiatry and the Path early psychosis clinic at UCSF. He has also practiced as an outpatient PMHNP at UCSF Benioff Children's Hospital Oakland where he provided psychiatric services to children and adolescents. Matthew has been practicing for 5 years. Prior to

becoming a PMHNP, Matthew worked as a registered nurse in the intensive care unit at both UC Davis and UCSF. Matthew studied Nursing for his undergraduate degree and he trained at UCSF for his PMHNP degree. He is excited to be starting SF-PPTP at SFCP this year.

Jennifer Toleikis, PsyD

I've been a practicing clinical psychologist for over 15 years. I received my BA in Art History from Wellesley College and earned my graduate degrees in Psychology at the Wright Institute in Berkeley. I have a private practice but have also been seeing patients and running groups at San Quentin State Prison on a part-time basis for many years. I did my predoctoral training at the



Institute on Aging in San Francisco and my postdoctoral training at the California Department of Rehabilitation in Richmond. Though my graduate training was largely in cognitive-behavioral methods, my experience seeing patients has found me enjoying working with certain patients in a more psychodynamic way. I am seeking to learn more about the "art" of psychotherapy in a collaborative and meaningful way. I grew up in Chicago but I've lived with my family in San Francisco for nearly 30 years. Now that my son has started college, and my husband and I are empty-nesters, I feel ready and excited for a new chapter! Besides my work, and spending time with family, I love running, hiking, traveling, reading, writing, and playing with our cats.

PLEASE WELCOME OUR
INCOMING
2023-2024
SFPPTP TRAINEES

Year 1 Section 2



Rachael Adler, MFT

Rachael's passion in working with the psychological and emotional lives of human beings began years ago with her training as a professional actor and director. She has a B.A. in Film Theory & Criticism from Wesleyan University and attended acting conservatory at the Neighborhood Playhouse in New York. Having founded three acting conservatories in the Bay Area, she worked as a teacher and coach to professional, beginning and non-actors from deeply diverse backgrounds in numerous conservatories in the U.S. and abroad, facilitating extensive emotional and psychological growth and change, and somatic exploration while

tailoring the work according to the individual's strengths, psychological defenses and fears through conscious engagement of the unconscious.

Rachael received graduate training at The Wright Institute and will soon begin associateship in private practice at the Hilary Combs Group in Oakland. Having completed practicum in a high-need elementary school in the East Bay, she looks forward to continuing her clinical work with adults, couples, and families in long-term psychotherapy. With an abiding curiosity regarding the human condition, a collaborative spirit, a thirst for feedback, and a genuine desire to provide meaningful psychoanalytic psychotherapy to individual adults, couples, and families, Rachael is thrilled to begin her analytic training at SFCP, and to participate in this dynamic intellectual community.

Yagmur Akay, AMFT

I moved to the US at the age of 18 to attend college in the Bay Area. I have BA in Psychology and a BM in Classical Music. I went to graduate school at CIIS and studied Integral Counseling Psychology. Currently, I work in a private practice setting focusing on helping clients with mood disorders, PTSD and continuing issues around integration of the Self. I work with a wide range of clients that come from different backgrounds, including but not limited to; immigrants, people of color and Turkish/American clients



that I provide bilingual therapy to. The reason I will be attending the SF-PPTP is to overall become a better clinician and to gain a deeper understanding of working psychoanalytically with clients of color and specifically to better support immigrants and continue to gain deeper understanding in working bilingually with Turkish American clients. In my free time I like to spend time in the ocean surfing or windsurfing!



Clarissa Bush, NP

Clarissa is a Psychiatric Nurse Practitioner. She has worked in acute settings over her NP career. Most recently, she has been a provider at ZSFG Psychiatric Emergency Services since 2016. She has an MS from the UCSF School of Nursing and an undergraduate degree in physiology from UC Berkeley. Active in Psychiatric NP training, she is interested in developing psychoanalytically informed curriculum. She is transitioning to a full-time, combined outpatient and UCSF Psychiatric NP residency program faculty role at the VA. She enjoys trail running, dogs, and studying lichens

Humera Chaudhary, MD

Humera Chaudhary is a child, adolescent, and adult psychiatrist in private practice in San Francisco. She completed her medical school and psychiatry residency at the Medical University of South Carolina in Charleston, SC. She completed her child and adolescent psychiatry fellowship at the Icahn School of Medicine at Mount Sinai in New York, NY. She is looking forward to joining SF-PPTP to deepen her understanding of psychoanalytic principals and learn from a community of like-minded mental health professionals.





Dani Golomb, MD

Dani is a born-and-raised New Yorker and current third-year psychiatry resident at California Pacific Medical Center.

After dropping out of art school, she worked as a photographer for the Village Voice before moving to Utah to lead at-risk youth on backpacking trips through the high desert. Before starting college, she worked in a homeless shelter on the Bowery. She graduated with degrees in Anthropology and Psychology from Columbia

University where she also completed her postbaccalaureate studies. She then made her way west, attending the University of Utah for medical school before settling in the Bay Area for residency.

She enjoys working with patients of diverse backgrounds, with particular interest in those living with chronic illness and brain injuries. She is passionate about the labor movement and was one of the leaders of the CPMC house staff unionization efforts.

Dani is a devoted bunny mom who loves nothing more than road-tripping through the Southwest. She enjoys making art, particularly quilting and ceramics.

Dani has dreamed of practicing psychoanalytically-oriented therapy for many years and is thrilled to join her new PPTP cohort.

Anna Howland, MA

Anna is an MFT working with individuals and couples in private practice in San Francisco & Berkeley. Her path is a serendipitous one: she got her BFA in Acting from Adelphi University and lived in New York City for many years until, finding herself creatively blocked, she discovered somatic body work. Eventually, she trained to become a somatic practitioner and quickly understood she needed more training. She then moved to the Bay Area and studied Somatic Psychotherapy at CIIS where she earned her Masters.

In addition to her client work, she supervises with The Center for Somatic Psychotherapy at CIIS, Center for Mindful Psychotherapy, and Grateful Heart. She

currently sits on the Board of Directors for Center for Mindful Psychotherapy.

Learning is a life-long love of hers. When she is not teaching or in session, you can find her reading. She reads novels like *Some People Eat Potato Chips*. If not reading, she will be consuming some other kind of art: theatre, stand-up, movies, wandering a museum, dancing, or at a live music show.



Jacob Porter Johnson, MD



I grew up in Portland and attended Oregon Health and Science University (OHSU) for medical school. I'm a psychiatry resident at San Mateo County Behavioral Health and Recovery Services, a small program with an emphasis on public psychiatry and psychodynamic psychotherapy. I studied comparative literature at Columbia, took time off to live and study in Berlin, and did graduate work in German literature at UC Berkeley,

where I was first exposed to psychoanalytic theory. As a medical student, I became interested in public mental health, publishing community-based research and doing elective training with people experiencing homelessness in metro Portland. I came to San Mateo in order to train within a framework oriented toward social justice and psychodynamic mindedness.

My outpatient work is based at South County Clinic in Redwood City. I provide medication management and psychotherapy, with the opportunity to offer long-term psychodynamic psychotherapy to a population that has historically had limited access to this modality. My training interests include psychoanalysis, addiction medicine, public systems of care, and reverse integration of medical services into community mental health clinics. I am so excited to be joining SF-PPTP in order take part in this community and bring my learning and experiences back to the public sector.

Adaobi Nwabuo, MBBS, MPH

Adaobi Nwabuo is currently a 4th year resident at University of California Davis. Born and raised in Lagos, Nigeria, Adaobi has always had an interest in population/systems-level health but in residency became enamored with the richness of connectivity through psychotherapy. After residency, Adaobi hopes to work in the community both at system and individual levels with a focus on victims of trauma. For balance, Adaobi likes to read, spend time with her dog and in nature, and crochet.





Sarah Rosenberg, MD

Sarah is an internist and palliative care doctor with a private practice in Mill Valley, California caring for patients with chronic illness who are struggling to cope with the illness experience. She completed medical school at Indiana University School of Medicine, followed by internal medicine residency at Thomas Jefferson University Hospital in Philadelphia, PA. After graduation, she served a year as Chief Resident before assuming the role of Internal Medicine Clerkship Director at Jefferson's affiliated medical school. She paired this leadership position in medical education with clinical work in primary care and hospital

medicine, however, she struggled to reconcile the administrative demands and time constraints of the general internal medicine world with her desire to provide unhurried attention to her patients and to uncover and address the root causes of their suffering. Seeking a space within Medicine where she could practice according to her values, Sarah pursued a fellowship in palliative medicine and matched at Stanford University. All the while, she engaged in her own psychoanalysis. As she waded through the emotional intensity and interpersonal complexity of palliative care, observing the same psychodynamic phenomena playing out between her and her patients as played out between her analyst and her, it became increasingly clear to Sarah that this fascinating and complicated interspsychic space was where she wanted to spend her professional life.

Matthew Williams, M.D.

Matt Williams is a psychiatry resident at UCSF. He just completed his second year of adult residency training and is planning to do a fellowship in Child and Adolescent Psychiatry. He received his MD and MBA at Georgetown University in Washington, DC, before coming to the West Coast for training. Before medical school, he was a high school teacher, teaching European history and AP Psychology. In his free time, he enjoys running, baking, and enjoying the ability to be outdoors 12 months out of the year. He's excited to start with the 2023 Foundations cohort and learn from his instructors and peers.





Kelsey Wong, D.O.

"I grew up in Sacramento, CA and went to college at UC Berkeley. I had a meandering undergraduate path with fond memories of writing poems in creative writing seminars, researching fan fiction and online communities, and my favorite - playing the carillon bells in the Campanile. After I got my BA degrees in English and Molecular and Cellular Biology, I went to medical school at WesternU COMP in Pomona, CA. I am now back in my hometown as a resident physician in the UC Davis combined Internal Medicine-Psychiatry

training program. I've found it rewarding to apply my prior college interests to my clinical practice. I'm particularly interested in the construction of the personal narrative, its role in identity development, and its application in clinical settings. I'm very excited to deepen my understanding of psychoanalytic approaches to care, and to learn together in a cohort with a variety of educational backgrounds and life experiences!"



THE ENRICO JONES FUND FOR EQUITY AND EQUALITY

WE NEED *YOUR* HELP!

Contributions are lower than this time last year,
but we are receiving more applications.
Please consider donating today!



**70 people of color received
tuition credits since 2021**

Join Us!

Please join us by making your contribution now online, by mail or by phone. Our members' participation in this effort has been excellent, but we need a continuing effort to aid our organization to achieve the diversity of members which we desire. All contributions help!

WAYS TO DONATE

ONLINE:

<https://www.sfcp.org/s/enrico-jones-fund>

BY MAIL:

444 Natoma Street
San Francisco, CA 94103

BY PHONE:

(415) 563-5815

- 15 students received tuition credits in 2021
- 25 students received tuition credits in 2022
- 30 students estimated to receive tuition credits through June 2024

A recipient told us:

"I strongly believe that as a psychoanalytic community, we all benefit from the Enrico Jones Fund's implicit and explicit recognition of the painful racism in our community in need of acknowledgement and repair. And for that I am the most grateful."

Contributions

- 2021: 12 donors, \$28,200
- 2022: 42 donors, \$40,600
- 2023: 36 donors, \$46,600

Total number of donors: 67

**Please note that repeating donors were counted once.*



On White Leaders Doing DEI Work:

A Conversation Including the Conflicts and Dilemmas

Wednesday, September 27, 2023

06:45pm – 09:00pm

Location:

Remote via Zoom Conferencing

Presenters:

Ken Epstein PhD, LCSW

Principal PREP to Change Consulting

Clinical Professor

Dept of Psychiatry UCSF

Gary Grossman, PhD

Faculty, Training & Supervising Analyst, SFCP

Past Chair, SFCP Psychoanalytic Education Division (PED)

Co-Chair, PED Anti-Racism Task Force

Maria Longuemare, MD, PhD

Faculty, Training & Supervising Analyst, SFCP

Chair, Curriculum Committee

President, SFCP

Moderator:

Clara Kwun, LCSW

Faculty and Member, SFCP

Co-Chair, CCSW

Faculty, The Asian American Center for Psychoanalysis

Program Fee:

Free

To Register:

Click to register for the event

<https://www.sfcps.org/registration-forms/2023-09-27-ccsw>

Questions?

Clara Kwun, LCSW

claraandjon@comcast.net

Daniel Yu, LCSW

d.yu.lcsw@gmail.com





Child Colloquium Series

THE OBLIVIOUS OBJECT



In this presentation we will consider the nature of unconscious object relations in puzzling clinical material from children who have an underlying sense of their object as 'oblivious.' Anne Alvarez observed this unconscious object relation in children of drug addicts, alcoholics or in cases of maternal depression. Mary Brady will examine this related concept of an 'oblivious object' in a thirteen-year-old girl and a late adolescent boy.

Presenter:

MARY BRADY, PHD

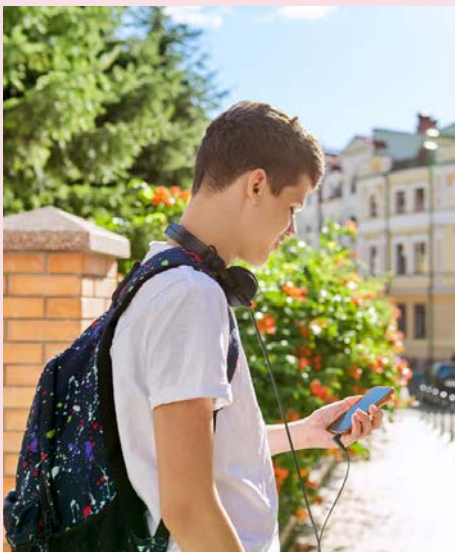
Discussant:

**ANNE ALVAREZ, PHD,
MACP**

(WILL JOIN VIA ZOOM FROM LONDON)

Moderator:

SHARON TYSON, PHD



SATURDAY, SEPTEMBER 30, 2023

10AM - 12PM



SFCP - 444 NATOMA STREET

FREE EVENT!

FOR MORE INFORMATION:

www.sfcpsf.org/2023-09-30-child-colloquia/





SCIENTIFIC MEETING

Multi-Level Outcome Study of Psychoanalyses of Chronically Depressed Patients with Early Trauma: An Update from the Clinical Point of View

Marianne Leuzinger-Bohleber, Ph.D.

University of Mainz, Germany

Former Director Sigmund Freud Institute, Mainz Germany

MODE, the Multi-Level Outcome Study of Psychoanalyses of Chronically Depressed Patients with Early Trauma is a study designed to compare low and high frequency psychoanalytic treatments. Outcome data of high interest includes fMRI studies to assess effects on brain structure after one year of treatment, and patient dream diaries to assess evolving qualities of dreams using contemporary methods of dream analysis.

The Primary Investigator, Dr. Marianne Leuzinger-Bohleber will provide an update on the study with a focus on clinical observations. The MODE study was awarded the Wallerstein Fellowship, based at SFCP, in 2022.

**Saturday,
October 7, 2023**

10am - 12pm

Online via Zoom



1.5 CME/CE Credits

*This program is free
of charge.*

FOR CME AND PROGRAM INFO:

<https://www.sfcp.org/2023-10-02-scientific-meeting/>



Member Announcements!

Recently Retired? Big Anniversary?
Special Announcements? Milestones?
A Member's Passing?

We want to acknowledge our members' milestones, achievements, and other announcements! Please email nicole.lee@sfcpc.org if you want to share your news so that we can post it in the newsletter!



COCAP PRESENTS:
READING CHILD AND ADOLESCENT PSYCHOANALYSIS
WEBINAR SERIES

**SUNDAY
01
OCTOBER
2023**

SPEAKERS:

VIRGINIA UNGAR
ANDREA CELENZA
ANNE ALVAREZ
MARY BRADY
DIANNE ELISE
ELENA MOLINARI
CHRISTINE ANZIEU-PREMMEREUR
ROBERT TYMINSKI
BRUCE REIS
EMIL JACKSON
DREW TILLOTSON

BRAVING THE EROTIC FIELD
IN THE PSYCHOANALYTIC
TREATMENT OF CHILDREN
AND ADOLESCENTS



EDITED BY
MARY T. BRADY



Author interviews:

*Braving the Erotic Field in the
Psychoanalytic Treatment of
Children and Adolescents*
edited by Mary Brady

On October 1st (9:30-11:30 PST, 12:30- 2:30 EST, 1:30-3:30 GMT-3, 5:30-7:30 GMT +1, 6:30-8:30 GMT +2) Virginia Ungar, Andrea Celenza, Anne Alvarez, Mary Brady, Dianne Elise, Elena Molinari, Christine Anzieu-Premmereur, Robert Tyminski, Bruce Reis, Emil Jackson and Drew Tillotson, contributors to Mary Brady's edited book, *Braving the Erotic Field in the Treatment of Children and Adolescents* will be interviewed by psychoanalyst Dodi Goldman.

The event is free. Each contributor will highlight their most crucial ideas to give the viewer a sense of the breadth and depth of this topic.

The Committee on Child and Adolescent Psychoanalysis (COCAP) is initiating a series entitled Reading Child and Adolescent Psychoanalysis, highlighting important new books in child psychoanalysis.

These interviews are the inaugural event for the series.

Register at:
www.ipa.world/cocapwebinars



OPERA ON THE COUCH

STEVEN H. GOLDBERG, MD, AMY TYSON, MD
CATHERINE MALLOUH, MD AND
JEANNE HARASEMOVITCH, L.C.S.W.

If dreams are the royal road to the unconscious, opera is a fellow traveler. As a comprehensive artform, it works simultaneously on the senses and the intellect, rendering cultural experience, wishes, fantasies, and the turbulence of our emotional lives into beautiful, dramatic and compelling form. It's the home of both myth and history, idealized, magical, or naturalistic. Also, as psychoanalysts Steven Goldberg and Lee Rather write, "Opera has the potential to widen the analyst's listening frame by encouraging greater attention to emotional subtleties conveyed by the patient, who accompanies their verbal "libretto" with musical elements of melody, timbre, pitch, rhythm and pacing, and opera can teach the psychoanalyst much about feelings that evade verbal description." (Goldberg and Rather, 2022). In this course participants will explore the operatic experience and its clinical applications with four different analyst instructors, each focusing on a different opera: Steven Goldberg will introduce the course and address character development in Puccini's *Madama Butterfly* and the opera's cultural context; Amy Tyson will apply her understanding of Scarpia's sociopathy in Puccini's *Tosca*, to working with difficulty patients; Catherine Mallouh, via Strauss' *Elektra*, will discuss the effects of traumatic loss on the mind; and Jeanne Harasemovitch will consider the importance of dreamlife and how Wagner's leitmotifs in *Die Meistersinger von Nurnberg* express shifting emotional states. It is expected that participants will have seen a production of each of the operas prior to the week on which it's being discussed.

Course enrollment will be limited to 25 persons.

STEVEN H. GOLDBERG, M.D., is a training and supervising analyst at SFCP, and a personal and supervising analyst at PINC. In addition to many publications, he has co-chaired *Opera on the Couch* in collaboration with the San Francisco Opera.

AMY TYSON, M.D., is an adult and child psychiatrist and psychoanalyst at SFCP, and an Associate Clinical Professor at UCSF. She has spoken on several operas from a psychoanalytic perspective.

CATHERINE MALLOUH, M.D., the third instructor, is on the faculty of SFCP and the UCSF School of Medicine. She has spoken on a number of operas from a psychoanalytic perspective and has also written on film and psychoanalysis.

JEANNE HARASEMOVITCH, L.C.S.W., the fourth instructor, is a faculty member of SFCP, of PINC and the Oregon Center for Psychoanalysis. She writes essays and film and book reviews on psychoanalysis and its intimate relations with the arts and the humanities.

Wednesdays, Oct 18 – Nov 8

7:30 – 9:00 pm

4 sessions

\$10 early discount until Oct 1

\$110 General

\$85 PINC Members

\$65 Candidates and Students

CE Credits available

pincsf.org/events

pincsf.org/events | 530 Bush Street, Suite 700, SF CA | (415) 288-4050

THE PSYCHOANALYTIC INSTITUTE OF NORTHERN CALIFORNIA (PINC) IS APPROVED BY THE AMERICAN PSYCHOLOGICAL ASSOCIATION TO SPONSOR CONTINUING EDUCATION FOR PSYCHOLOGISTS. PINC MAINTAINS RESPONSIBILITY FOR THIS PROGRAM AND ITS CONTENT. SOME OF THESE COURSES MEET THE QUALIFICATIONS FOR CONTINUING EDUCATION CREDIT(S) FOR PHDS, MFTS AND/OR LCSWS. VISIT PINCsf.org/policies FOR POLICIES AND DISCLAIMERS.

OFFICE SPACE FOR RENT

Bright and sunny corner office available in a well-maintained, owner-occupied office building. The building is used exclusively for psychotherapy and psychoanalytic practices. It is quiet and well-located in lower Pacific Heights. The office is 204 square feet and has two large windows and a closet. There is a shared waiting room and a kitchen with a refrigerator and microwave.

The rent is \$1400 per month and this includes utilities and once per week office cleaning and an additional once-per-week cleaning of the common areas.

Dr. Kenneth Roberson

m: 415-922-1122

a: 1700 Pierce Street, Suite 402, San Francisco, CA 94115

e: dr.roberson@kennethrobersonphd.com