

SAN FRANCISCO CENTER FOR PSYCHOANALYSIS



WHAT'S IN THIS ISSUE

- President's Report - 1
- APsA Bylaws Amendment - 3
- Report from PED Chair- 4
- Strategic Plan Implementation Report - 7
- Annual Giving Campaign Update - 9
- Wine and Cheese Event - 10
- Child Colloquia Event - 11
- CCSW Event - 12
- CAPPTP Open House - 13
- Dialogues Event - 14
- SFPPTP Open House - 15
- PAPPTP Open House - 16
- Save the Date: PED Graduation - 17
- Save the Date: PPED Graduation - 18
- Please Share Your News! - 19
- Member's News -20
- The SFCP Library is OPEN - 21
- NCP Event - 22
- NCROCAP Annual Meeting - 24

SFCP PRESIDENT'S REPORT

Maria Longuemare, MD, PhD
SFCP President

Happy New Year! I hope you had a restful and restorative break, and are managing to stay safe in the storms.

It is **voting time at SFCP** for some of our members on two important initiatives!

1. APsA members are encouraged to vote by January 26 on a proposed ByLaw Amendment to welcome psychotherapists, academics, researchers, community members, and trainees as APsA members. This ByLaw change will serve as an important advance for the strength, diversity, and equity of APsA, as well as for its intellectual enrichment. Please see the accompanying article in this newsletter (also shown in this link [APsA ByLaw Amendment for Expanded Membership](#)) for more information. It is very important that enough APsA members vote to ratify this amendment, so please look for your ballot sent in an email

SFCP President's Report cont.

from the APsA Election Coordinator on 1/2/23. Note: if you are an APsA member having trouble accessing your ballot, please contact support@directvote.net or call 1-866-909-3549. For questions specific to the ByLaw Amendment proposal, please contact Bill Glover at williamcglover@gmail.com or Chuck Fisher at Charlep@aol.com. I am grateful to Bill and Chuck for their dedicated work on this initiative over several years in order to bring about this much-needed change.

2. Analyst and Candidate members are encouraged to **vote to ratify proposed changes specific to the Psychoanalytic Training Program** that arose out of the recent *PED Survey on Diversity and Accessibility in Analytic Training*. Please see the accompanying newsletter article by PED Chair Beth Steinberg for more information about the ratification vote (which is being conducted by the SFCP Board of Trustees) and the process within the PED Committee that led to this decision.

It was gratifying to see the exceptional level of active member engagement over the past several years on the issues raised in the [PED Survey on Diversity and Accessibility in Analytic Training](#) and the strong level of participation in the survey itself (273 respondents, including over 500 individual comments in addition to the survey question). The Board of Trustees will be forming a Task Force to explore the implementation of a number of the proposals that received majority support amongst all members, and the DEI Task Force and the Strategic Plan Implementation Teams are actively working on these and other initiatives (stay tuned).

I am aware that these issues have been extraordinarily challenging for our organization over the past several years, and that there are some members who are very unhappy with the outcomes and process. I am very sad about the resignations of the four PED Committee members over their objections, as well as the painful impact that this process has had on all of us at SFCP. Since its inception, psychoanalysis as a field has survived continuous controversies and debates regarding theory, practice, and the administration of psychoanalytic training programs. Though acutely difficult at the time for all involved, these controversies have ultimately strengthened and enriched the field, and have allowed psychoanalysis to evolve amidst massive societal change. I want to echo the words of PED Chair Beth Steinberg regarding the importance of proceeding in a democratic fashion within our Center, and seeking compromise and healing amongst our differences toward our common goal of keeping the field of psychoanalysis alive and thriving at this moment in history.

Finally, please be aware of opportunities to become more involved at SFCP, including work on: the **CE/CME Committee** which allows SFCP programs to offer CE/CME credits to members; the **Scientific Meetings** which provide ongoing dialogue with local and visiting scholars; and the **Membership Division Chair** which coordinates these activities. In addition, the **Committee on Groups (COG)** is actively seeking new members. All of these positions are vital to SFCP growth and sustainability, and we would love to have you involved! Please contact me marialonguemaremd@gmail.com and/or Marcia Hodges marcia.hodges@sfcp.org for more information.

APsA ByLaws Amendment on Expanded Membership

All APsA members are encouraged to please [vote by January 26th](#) on the new **APsA Bylaw on Expanded Membership** that would extend APsA membership to psychotherapists, academics, researchers and community members as described at this link to the [Proposed Bylaws Expanded Membership Amendment](#). The APsA Board hopes that those of you who are not eligible to join APsA will be able to do so soon, and that those analysts and candidates who do not already belong will join in revitalizing APsA as part of this new initiative:

- Proposed Bylaw would replace APsA's current complex membership structure with three categories of membership -- **Clinical, Academic, and Community**.
- **Clinical Members** will have voting rights and will include individuals who have completed or enrolled in psychoanalytic training programs or psychotherapy training programs as described in Article III.1.A.
- **Academic Members** will have voting rights and will include individuals who have completed or enrolled in a psychoanalytically focused academic and/or research program as described in Article III.1.B.
- **Community Members** will include individuals interested in psychoanalytic thought and principles but who do not meet criteria for Clinical or Academic Membership as described in Article III.1.C (do not have voting rights).
- Notably the amendment does not have any effect on training standards for graduation from psychoanalytic training programs in APsA's institutes.
- The proposed new bylaw has been developed over the course of several years by APsA's leadership, Officers, and Board. Please see this link to an [Email Update on Expanded APsA Membership](#), which explains why the Officers and the Board see the new bylaw as an important advance for the strength, diversity, and equity of APsA, as well as for its intellectual enrichment.
- **APsA voting is open now!** It is very important that enough APsA members vote to ratify this amendment, so please look for your ballot sent in an email from the APsA Election Coordinator on 1/2/23, and **vote by the deadline of January 26th**. Simplified voting instructions will be sent very soon by the APsA office.

Note: if you are an APsA member having trouble accessing your ballot, please contact support@directvote.net or call 1-866-909-3549.

For further questions, please contact Bill Glover at williamcglover@gmail.com and Chuck Fisher at Charlep@aol.com.

Report from the Chair of the Psychoanalytic Education Division

I was very pleased to share the results of the *PED Survey on Diversity and Accessibility in Analytic Training* with the SFCP community in December. The participation in the survey was extremely robust, with responses from 141 Analyst members, 40 Candidate members, 75 Community members, and 17 Associate Members. A companion survey was also sent to non-members. The following reports describe survey results in detail:

[Report - Members Survey on Diversity and Accessibility in Analytic Training](#)

[Report - Non-Members Survey on Diversity and Accessibility in Analytic Training](#)

Following the survey and the clearly articulated majority opinions of the membership voiced in the survey, a motion was introduced at the December PED Committee meeting to move forward with each proposal from the survey supported by the members. **The PED Committee voted 12-2 to approve this motion.**

Two proposals, supported by a majority in each membership category, call for Candidate Training Grants to be established. Clicking on either proposal links to its full text:

- [Establish Candidate Training Grants](#)
- [Fund Candidate Training Grants by Increasing Membership Dues](#)

Per nonprofit law, moving forward on these proposals requires that they first undergo legal and financial review, and the Board of Trustees has agreed to form a Task Force to undertake this process at the PED's request.

At the PED's request, the Board of Trustees has also agreed to host a vote of all Analyst and Candidate Members to ratify the following majority-supported proposals for specific changes to the Psychoanalytic Training Program (clicking on any proposal links to its full text):

- [Ultra-Low Fee Training Analysis](#)
- [Ultra-Low Fee Supervision](#)
- [Changes in Supervision Fee Policy](#)
- [Change in Minimum Required Frequency for Supervised Control Cases](#)
- [Change in Minimum Required Frequency for Personal Training Analysis](#)

Report from the Chair of the Psychoanalytic Education Division cont.

Analysts and Candidates should have already received their ballots to vote on each of these proposals via an email from SurveyMonkey. The voting period will close at midnight on Friday January 27. If you have not received your ballot, first check your spam folder and, if you do not find it there, contact aaron.chow@sfcg.org.

The December PED decision to move forward with a ratification vote for majority support proposals was the outcome of a multi-year process which adhered closely to the precedent for democratically-decided changes to the analytic training program policy set by the [Institute Choice Task Force \(ICTF\)](#) in 2016-18, which also involved an extensive period of public debate and discussion, followed by a survey on various proposals, and a ratification vote by Analyst and Candidate Members on those proposals which received majority support in the survey.

The decision was the product of an intensive process of engagement within the community and within the PED Committee over the past several years, which has involved a great deal of controversy and pain amongst many members of our organization. It was my feeling – supported by a vote of the majority of the PED Committee members – that the extensive process of discussion and deliberation of these matters from 2019-2022 (see this [Timeline](#) for a summary), combined with the clearly articulated majority opinions of the membership voiced in the recent survey, had together provided enough input to justify a move to a ratification vote now. Furthermore, I felt strongly that these decisions should be guided by the majority opinion amongst our Analyst and Candidate Members. I therefore introduced the motion that Analyst and Candidate Members be allowed to decide this matter through a ratification vote, and the motion was resoundingly approved by the majority of the PED Committee.

Despite the majority support for these decisions, I am aware that there are members who remain opposed to the outcome, as well as those who opposed the process at the December PED Committee meeting in which the motion for a ratification vote on the majority support proposals was put forward and approved. I very much regret the resignations of four PED Committee members who would have preferred a longer period of discussion within the PED Committee instead of a move to open the decision to a membership vote at this time. Those committee members are Helen Schoenhals Hart, Dr. med., Laura Dansky, PhD, Ann Martini, LCSW and Jan Mill, PhD, who had been Chair of the Supervising Analyst Committee, the Admissions Co-Chairs and the Co-Secretary, respectively. They each have contributed a great deal to the PED, and they will be missed. While I regret the inevitable upset caused by these proceedings, I feel that the process we followed honored the extraordinary engagement of the membership on these issues over the past 3 years; the core democratic value of making decisions based on majority support; and the importance of the PED Committee modeling a capacity for decentering and giving up on individual desires in deference to the collective will.

BETH STEINBERG, PHD
CHAIR, PSYCHOANALYTIC EDUCATION DIVISION

Report from the Chair of the Psychoanalytic Education Division cont.

I am pleased to announce that Holly Gordon, DMH has agreed to step in as Chair of the Supervising Analyst Committee, and that Michael Donner, PhD has officially stepped into the role of Training Analyst Chair.

In other news, The PED Curriculum Committee held a PED Faculty Retreat on Sunday January 8 that was extremely generative. In the retreat, the PED faculty reviewed the current curriculum, which was felt by all to be very exciting. In addition, PED faculty members thought together in both small and large groups about the most important elements of psychoanalytic learning and practice and about teaching in both remote and hybrid settings. The PED faculty identified a desire to immerse themselves in more conversations about pedagogy as it specifically pertains to teaching about psychoanalysis as well as adding the lens of group process into the teaching experience.

News from the Strategic Plan Implementation Team

The Strategic Plan process included many surveys & focus groups this past summer, and invited all members to participate in our five planning sessions this fall. The following four Strategic Directions were generated by the participants:

1. **Energizing the membership to co-create the life of the organization** (e.g., making it easy to volunteer and creating a more welcoming environment).
2. **Promoting an inclusive, reflective organization** (e.g., attention to group process, DEI).
3. **Re-envisioning and building a sustainable organizational structure** to support prioritized programming (e.g., reviewing possible organizational structures).
4. **Developing and supporting leaders** (e.g., training members to occupy leadership positions).

There are members who have agreed to participate on teams whose goal it is to implement these four Strategic Directions. The Implementation Team is working to integrate the work of these teams with ongoing work at the Center, including clarifying authority.

We are well aware of the important work ahead of us and the need to move forward. To that end, we have decided to meet twice per month through February. Our role is to ensure that:

- Efforts are not duplicated
- Lines of authority are clear
- All members are welcome
- Communication is open between the Strategic Directions Teams and the rest of SFCP

We will support the Strategic Directions Teams and work to remove obstacles in their path to facilitate the process of change and growth at SFCP.

The Implementation Team plans to hold quarterly meetings with the Strategic Directions Teams to assess progress, celebrate successes and adjust plans as needed. However, the original quarterly meeting of January 21st has been postponed until the Strategic Directions Teams have had a chance to meet.

We intend to communicate with all of you monthly to keep you apprised of our progress.

News from the Strategic Plan Implementation Team cont.

If you'd like to learn more about this Implementation Committee, please contact Marcia Hodges, Administrative Director, at marcia.hodges@sfcpc.org. We are especially interested in having representation from CCSW.

Implementation Team

Ari Bachrach

Meryl Botkin

Cheryl Goodrich

Marcia Hodges

Maria Longuemare

Brett Penfil

Paul Sorbo

Cathy Witzling



Annual Giving Campaign Update!

Our 2022-2023 Goals

1. RAISE \$130,000
2. EARN THE SUPPORT AND PARTICIPATION OF **ALL** SFCP MEMBERS
3. INCREASE THE NUMBER OF PARTICIPANTS FOR OUR IN-PERSON FUNDRAISING EVENTS

January Update

TO DATE, WE HAVE RAISED
\$49,502! THAT IS 38% OF OUR
GOAL.

WE ALSO HAVE JUST OVER **10%**
OF OUR MEMBERS' PARTICIPATION
SINCE OUR LAUNCH IN
DECEMBER!



YOU'RE INVITED TO SFCP'S

wine & cheese party

*IN SUPPORT OF THE
ANNUAL GIVING CAMPAIGN*

HOSTED BY
PAUL AND DENA SORBO
AT THEIR HOME IN MOUNTAIN VIEW
(ADDRESS PROVIDED UPON RSVP)

SATURDAY, JANUARY 21, 2023
3-6PM

PLEASE RSVP HERE





CHILD COLLOQUIUM SERIES

DEEP CHANGE:

A CLINICAL WORKSHOP ON LONG TERM PSYCHOTHERAPY WITH CURRENT AND FORMER FOSTER CHILDREN SERVED BY A HOME WITHIN

A Home Within (AHW) is a national organization that supports therapists who see one current or former foster youth for long term pro bono psychotherapy. Four AHW clinicians will present vignettes from their work, including two cases lasting ten years and two shorter cases. We will explore how continuity, reliability and a calm, containing therapist activate and structure a secure attachment. This results in psychic growth despite ongoing traumatic circumstances and the anti attachment defensive structures that are inevitable in those who have suffered trauma, repeated losses, and fractured trust.

PRESENTERS

Kim Sherman, LCSW
Sally Cohen, LMFT
Lauren Phillips, PhD
Mary Haake, PhD

MODERATOR

L. Eileen Keller, PhD

WHEN

Saturday
January 28, 2023
10:00am-12:00pm
FREE ONLINE event

RSVP HERE:

[www.tfaforms.com/
5013803](http://www.tfaforms.com/5013803)

MORE INFO:

[www.sfcps.org/s/cc-
2023-01-28](http://www.sfcps.org/s/cc-2023-01-28)





COALITION for CLINICAL SOCIAL WORK

The Social Unconscious in Theory and Practice: Working Across the Spectrum of Human Difference

Wednesday, February 8, 2023

06:45pm – 09:00pm

Location:

Remote via Zoom Conferencing

Presenter:

Laura Farha, LCSW

Private Practice

Program Fee:

Free

Discussant:

Karim Dajani, PsyD

Member and Faculty, SFCP

Faculty, George Washington University

Private Practice

To Register:

Click to register for the event

<https://www.tfaforms.com/5023796>

Questions?

Clara Kwun, LCSW

claraandjon@comcast.net

Moderators:

Clara Kwun, LCSW

Daniel Yu, LCSW

CCSW Clinical Evening Co-Chairs

Daniel Yu, LCSW

d.yu.lcsw@gmail.com



CHILD AND ADOLESCENT
PSYCHOANALYTIC PSYCHOTHERAPY
TRAINING PROGRAM (CAPPTP)



OPEN HOUSE

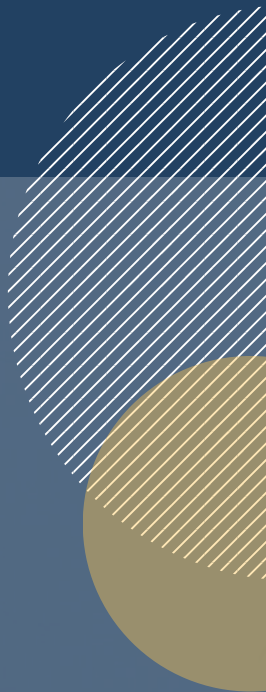
MEET WITH FACULTY, CURRENT STUDENTS
AND OTHER PROSPECTIVE APPLICANTS!

THURSDAY, FEBRUARY 9, 2023
7:30PM - 8:30PM
HYBRID EVENT

Light refreshments will be served.

*San Francisco Center for Psychoanalysis
444 Natoma Street, San Francisco, CA 94103*

RSVP to Tina Phu
(415) 563-5815 x106
Tina.Phu@sfcfp.org



Dialogues in Contemporary Psychoanalysis

Primary Maternal Preoccupation: Disturbance in Pregnancy and the Postpartum

Emotional difficulties in pregnancy and the postpartum can be a crisis for mother and infant, interfering with maternal development and bonding with her infant. These difficulties are usually intertwined with losses, early deprivation, and unresolved conflicts in the mother's own infancy and childhood. Catherine Mallouh will discuss the psychoanalytic understanding of maternal development and its inherent conflicts. She will describe her clinical experience with mothers struggling with overwhelming emotions, including depression and anxiety, in pregnancy and the postpartum. An international group of leading infant-parent therapists will discuss Dr Mallouh's presentation.

Date & Time:

Saturday, February 11, 2023

9:30 AM - 12:30 PM PST

London - 5:30 PM - 8:30 PM on February 11th

Australia - 4:30 AM - 7:30 PM on February 12th

Japan - 2:30 AM - 5:30 AM on February 12th

Location:

Online via ZOOM

Presenter:

Catherine Mallouh, MD

Panel Discussants:

Anne Alvarez, PhD, MACP (*London*)

Frances Thomson-Salo, PhD (*Australia*)

Hisako Watanabe, MD, PhD (*Japan*)

Panel Moderator:

Stephen Seligman, DMH

Moderator:

John DiMartini, PhD

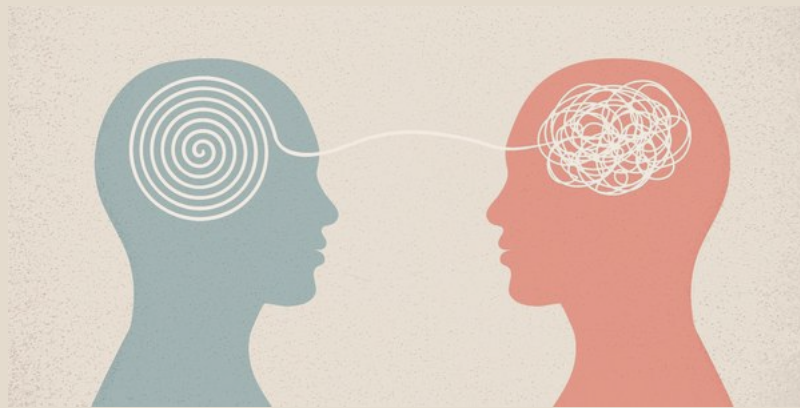
Program Fee:

\$25 - \$50

Free for SFCP and non-SFCP Candidates, PPTP Trainees, and Students

For more information and to register, please visit
sfcp.org/s/dialogues-2023-02-11

SAN FRANCISCO PSYCHOANALYTIC
PSYCHOTHERAPY TRAINING PROGRAM
(SFPPTP)



INFORMATIONAL

open
HOUSE

- RIGOROUS CLASSROOM INSTRUCTION
- EXPERT SUPERVISION
- WARM COMMUNITY OF COLLEAGUES
- MENTORSHIP

WEDNESDAY, FEBRUARY 15, 2023

🕒 7:00PM - 9:00PM

📍 444 NATOMA ST. SAN FRANCISCO, CA 94103

👥 IN-PERSON EVENT



[CLICK HERE TO RSVP!](#)

For more information on the SFPPTP Program, please visit our [website](#).

CONTACT OUR OFFICE FOR MORE DETAILS:

📞 415-563-5815 X106

✉️ TINA.PHU@SFCP.ORG

SAN FRANCISCO
CENTER FOR
PSYCHOANALYSIS



PALO ALTO PSYCHOANALYTIC
PSYCHOTHERAPY TRAINING PROGRAM
(PAPPTP)

Informational
OPEN HOUSE

THURSDAY, MARCH 9, 2023

7:00 - 9:00PM

IN-PERSON EVENT!

PLEASE JOIN US FOR APPETIZERS, A CLINICAL CASE DISCUSSION
AND PROGRAM INFORMATION!

PAPPTP STUDENTS AND FACULTY WILL BE ON HAND TO TALK
WITH YOU ABOUT THE TWO-YEAR PROGRAM AND THE
FELLOWSHIP YEAR.

TO RSVP, CONTACT CATHERINE PHILLIPS, LCSW



catherinehphillips@gmail.com



(650) 213-2949

ADDRESS PROVIDED UPON RSVP.

FOR MORE INFORMATION ON THE PAPPTP PROGRAM, PLEASE VISIT [SFCF.ORG/S/PAPPTP](https://sfcf.org/s/papptp)

SFCP
PSYCHOANALYTIC EDUCATION
DIVISION

SAVE THE DATE!

GRADUATION 2023

STEPHEN PURCELL, MD
GRADUATION SPEAKER



Saturday, May 13, 2023

4:00 - 6:00pm

Reception to follow at
the Intercontinental Hotel.
Stay tuned for details!



San Francisco Center for Psychoanalysis

Psychoanalytic Psychotherapy
Education Division

GRADUATION 2023

SAVE THE DATE!

SATURDAY, JUNE 3RD

4:00PM - 6:00PM

Please share your news!

Recently Retired? Big Anniversary?

Special Announcements? Milestones?

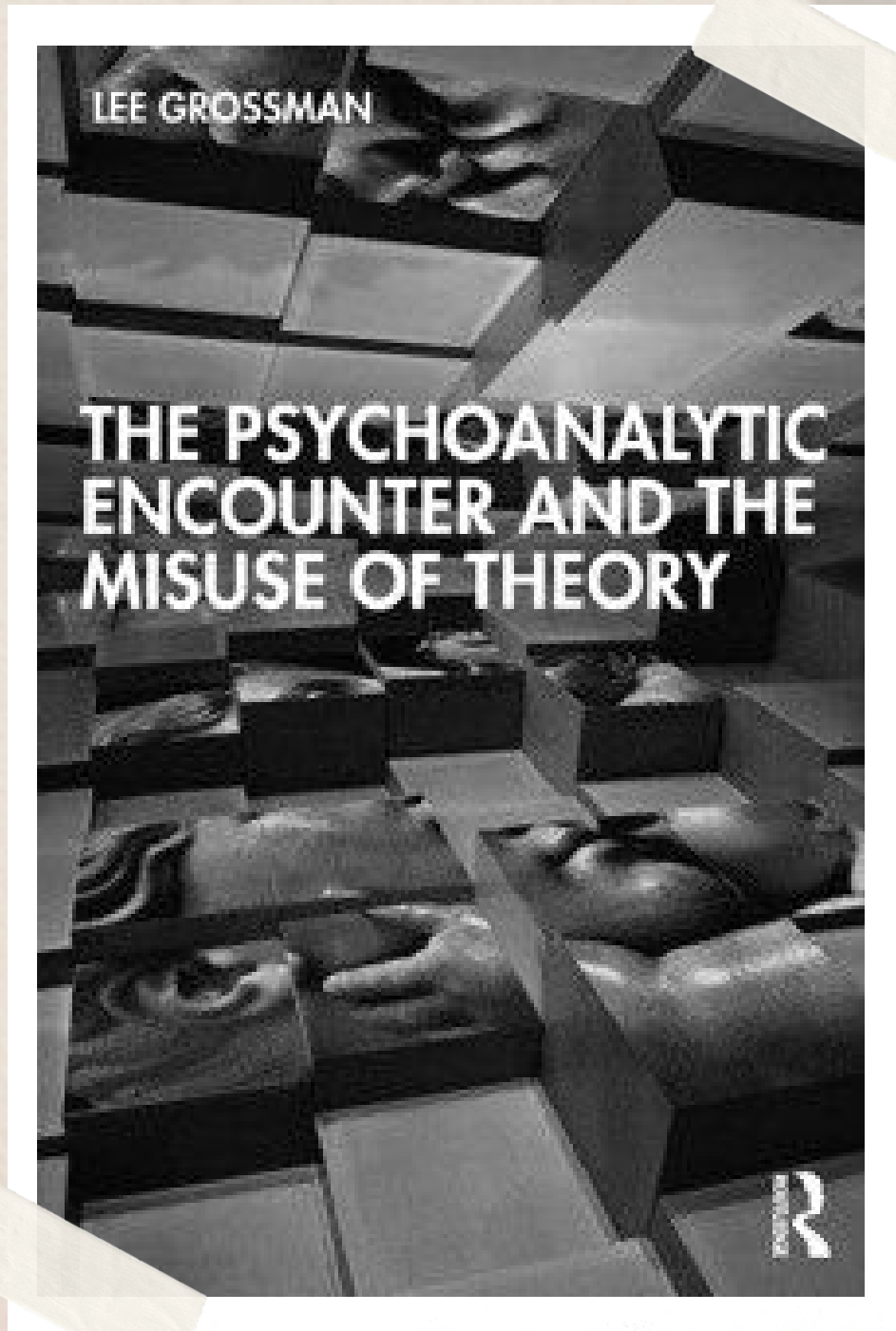
A Member's Passing?

We want to acknowledge our members' milestones, achievements, and other announcements! Please email nicole.lee@sfcpc.org if you want to share your news so that we can post it in the newsletter!





CONGRATULATIONS TO ONE
OF OUR ANALYST MEMBERS,
LEE GROSSMAN, MD!



LEE GROSSMAN'S NEW BOOK, THE PSYCHOANALYTIC ENCOUNTER AND THE
MISUSE OF THEORY, IS NOW AVAILABLE FROM ROUTLEDGE PRESS AT
[HTTPS://ROUTLEDGE.PUB/THE-PSYCHOANALYTIC-ENCOUNTER-AND-THE-
MISUSE-OF-THEORY.](https://routledge.pub/the-psychoanalytic-encounter-and-the-misuse-of-theory)



The Library is **OPEN!**

You may check out and return library materials at the reference desk (librarian's desk) anytime you are at the center. Numerous print and online resources are available to you, including books, journals, databases, and audio-visual materials. The SFCP library aims to create an environment where all people feel welcome, respected, and safe and have equitable opportunities and access to all our resources.

PLEASE STOP BY OR CONTACT THE LIBRARIAN,
RASHMITA JANI SRIRAM AT RASHMITA.SRIRAM@SFCP.ORG,
IF YOU HAVE ANY QUESTIONS OR RESEARCH REQUESTS.

CLICK [HERE](#) TO ACCESS THE LIBRARY'S HOME PAGE.

NCP is dedicated to deepening the understanding of being human through the theory and practice of psychoanalysis.

NCP and TFP New York present a two-day event at the New Center for Psychoanalysis

January 19 & 21, 2023

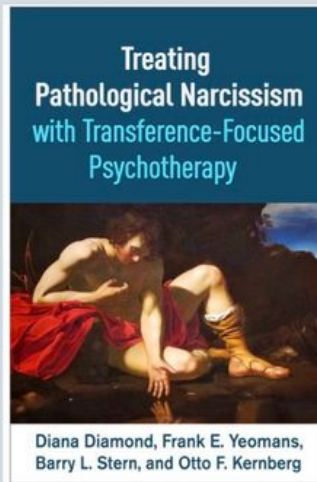
Transference-Focused Psychotherapy for Narcissistic Personality Disorder

Thursday, January 19, 2023
8-10 pm PT | In-person and via Zoom

Transference-Focused Psychotherapy (TFP): Scientific Meeting

Pre-registration is required

2 CE Credits; \$25



Diana Diamond, PhD, will discuss her innovative work in using transference-focused psychotherapy (TFP) to treat a broad range of patients with personality disorders, highlighting pathological narcissism.

TFP is a contemporary object relations approach to assessing and treating patients with personality disorders.

Participants will be introduced to the basic tenets of TFP, such as use of a treatment contract, naming players in a dominant object relation, and identifying and working with how these object relational dyads help to contribute to typical transference/countertransference patterns and resistances encountered with narcissistic patients.

[Register](#)

Saturday, January 21, 2023
8:30 am - 5 pm PT | In-person and via Zoom

Treating Pathological Narcissism with Transference-Focused Psychotherapy: One-Day Training

Pre-registration is required

6.75 CE Credits

General registration: \$180; Clinical Associates and students: \$90

Continuing a tradition of offering unique training opportunities with esteemed clinicians, NCP provides this special hybrid training where participants will be introduced to the basic techniques and tenets of TFP with a new focus on TFP for treating pathological narcissism.

TFP is a manualized, evidence-based psychoanalytic therapy for patients with borderline personality disorder (BPD) that has recently been adapted for patients with

narcissistic personality disorder (NPD) and pathological narcissism (PN).

TFP is based on a contemporary object relations model of psychological functioning that incorporates findings from attachment and neurocognitive research. The treatment focuses on internalized representations of self and other that organize the patient's interpersonal experience.

Take your first step toward TFP certification with NCP and Diana Diamond, PhD.

Learning objectives and the full schedule can be found on our website.

Register

Program Coordinator: Joshua C. Richmond, MPW



Diana Diamond, PhD, is a clinical psychologist and psychoanalyst who specializes in theory, research, and treatment of borderline and narcissistic personality disorders. She is Professor Emerita in the Doctoral Program in Clinical Psychology at the City University of New York and Senior Fellow at the

Personality Disorders Institute at New York Presbyterian Hospital-Weill Cornell Medical College. She is also on the faculty of the New York Psychoanalytic Society and Institute, the NYU Postdoctoral Program in Psychotherapy and Psychoanalysis, and the New School for Social Research. She is in private practice of psychoanalytic psychotherapy and psychoanalysis in New York City and Sag Harbor, NY.

This activity has been planned and implemented in accordance with the accreditation requirements and policies of the Accreditation Council for Continuing Medical Education (ACCME) through the joint providership of American Psychoanalytic Association and the New Center for Psychoanalysis. The American Psychoanalytic Association is accredited by the ACCME to provide continuing medical education for physicians.

The American Psychoanalytic Association designates these Live Activities for a maximum of 2 and 6.75 AMA PRA Category 1 Credit(s)[™]. Physicians should claim only the credit commensurate with the extent of their participation in the activity.

IMPORTANT DISCLOSURE INFORMATION FOR ALL LEARNERS: None of the planners and presenters for this educational activity have relevant financial relationship(s)* to disclose with ineligible companies* whose primary business is producing, marketing, selling, re-selling, or distributing healthcare products used by or on patients.

*Financial relationships are relevant if the educational content an individual can control is related to the business lines or products of the ineligible company.

-Updated July 2021-

Connect with us!



New Center for Psychoanalysis
310.478.6541 | 310.477.5968
info@n-c-p.org
n-c-p.org

Come gather together at our 2023 annual meeting.

January 27-29 2023 La Playa Carmel

[Click here for program/registration/hotel information & to join](#)

Our regional organization is the local branch of our national organization:

AMERICAN ACADEMY OF
CHILD & ADOLESCENT
PSYCHIATRY

WWW.AACAP.ORG